

# Product Datasheet

## Siglec-2/CD22 Antibody (RFB4)

### NBP2-49890

Unit Size: 0.2 mg

Store at 4C. Do not freeze.

[www.novusbio.com](http://www.novusbio.com)



[technical@novusbio.com](mailto:technical@novusbio.com)

#### Publications: 1

Protocols, Publications, Related Products, Reviews, Research Tools and Images at:  
[www.novusbio.com/NBP2-49890](http://www.novusbio.com/NBP2-49890)

Updated 11/2/2024 v.20.1

Earn rewards for product  
reviews and publications.

Submit a publication at [www.novusbio.com/publications](http://www.novusbio.com/publications)

Submit a review at [www.novusbio.com/reviews/destination/NBP2-49890](http://www.novusbio.com/reviews/destination/NBP2-49890)



**NBP2-49890**

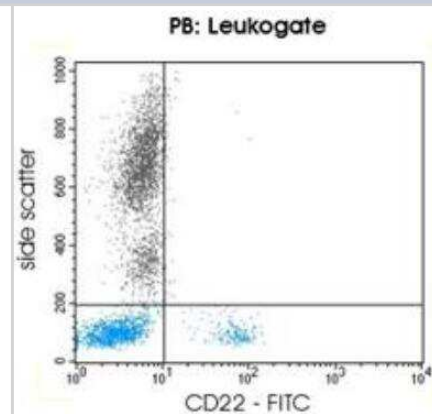
Siglec-2/CD22 Antibody (RFB4)

Product Information	
Unit Size	0.2 mg
Concentration	Please see the vial label for concentration. If unlisted please contact technical services.
Storage	Store at 4C. Do not freeze.
Clonality	Monoclonal
Clone	RFB4
Preservative	0.05% Sodium Azide
Isotype	IgG1
Purity	Protein A or G purified
Buffer	PBS (pH 7.2) and 1.0% BSA
Product Description	
Description	For stability reasons this monoclonal antibody solution contains sodium azide. These reagents should be stored at 2-8C (DO NOT FREEZE!) and protected from prolonged exposure to light. If a slight precipitation occurs upon storage, this should be removed by centrifugation. It will not affect the performance or the concentration of the product. Stability of the reagent: Please refer to the expiry date printed onto the vial. The use of the reagent after the expiration date is not recommended.
Host	Mouse
Gene ID	933
Gene Symbol	CD22
Species	Human, Canine
Reactivity Notes	Use in Canine reported in scientific literature (PMID:31826004).
Specificity/Sensitivity	This antibody recognizes surface Siglec-2/CD22 expressed by mature peripheral B-cells and cytoplasmatic Siglec-2/CD22 expressed by precursor B-cells. The sensitivity is determined by staining well-defined blood samples from representative donors with serial-fold mAb dilutions to obtain a titration curve that allows relating the mAb concentration to the percentage of stained cells and geometric MFI (mean fluorescence intensity). For this purpose, a mAb-concentration range is selected to include both the saturation point (i.e. the mAb dilution expected to bind all epitopes on the target cell) and the detection threshold (i.e. the mAb dilution expected to represent the least amount of mAb needed to detect an identical percentage of cells). In practice, 50 ul of leukocytes containing $10^7$ cells/ml are stained with 20 ul mAb of various dilutions to obtain a titration curve and to identify the saturation point and detection threshold. The final concentration of the product is then adjusted to be at least 3-fold above the detection threshold. In addition and to control lot-to-lot variation, the given lot is compared and adjusted to fluorescence standards with defined intensity.
Immunogen	135 kDa type I integral membrane protein
Product Application Details	
Applications	Flow Cytometry, Immunocytochemistry/ Immunofluorescence, Immunofluorescence
Recommended Dilutions	Flow Cytometry, Immunocytochemistry/ Immunofluorescence, Immunofluorescence



## Images

Flow Cytometry: Siglec-2/CD22 Antibody (RFB4) [NBP2-49890] - Flow Cytometry using Siglec-2/CD22 Antibody (RFB4).



## Publications

Craig KKL, Wood GA, Keller SM, et al. MicroRNA profiling in canine multicentric lymphoma PLoS One. [PMID: 31826004] (FLOW, Canine)



### **Novus Biologicals USA**

10730 E. Briarwood Avenue  
Centennial, CO 80112  
USA  
Phone: 303.730.1950  
Toll Free: 1.888.506.6887  
Fax: 303.730.1966  
nb-customerservice@bio-techne.com

### **Bio-Techne Canada**

21 Canmotor Ave  
Toronto, ON M8Z 4E6  
Canada  
Phone: 905.827.6400  
Toll Free: 855.668.8722  
Fax: 905.827.6402  
canada.inquires@bio-techne.com

### **Bio-Techne Ltd**

19 Barton Lane  
Abingdon Science Park  
Abingdon, OX14 3NB, United Kingdom  
Phone: (44) (0) 1235 529449  
Free Phone: 0800 37 34 15  
Fax: (44) (0) 1235 533420  
info.EMEA@bio-techne.com

### **General Contact Information**

[www.novusbio.com](http://www.novusbio.com)  
Technical Support: nb-technical@bio-techne.com  
Orders: nb-customerservice@bio-techne.com  
General: novus@novusbio.com

### **Products Related to NBP2-49890**

HAF007	Goat anti-Mouse IgG Secondary Antibody [HRP]
NB720-B	Rabbit anti-Mouse IgG (H+L) Secondary Antibody [Biotin]
NBP1-97005-0.5mg	Mouse IgG1 Isotype Control (MG1)
NBP2-49890F	Siglec-2/CD22 Antibody (RFB4) [FITC]

### **Limitations**

This product is for research use only and is not approved for use in humans or in clinical diagnosis. Primary Antibodies are guaranteed for 1 year from date of receipt.

For more information on our 100% guarantee, please visit [www.novusbio.com/guarantee](http://www.novusbio.com/guarantee)

Earn gift cards/discounts by submitting a review: [www.novusbio.com/reviews/submit/NBP2-49890](http://www.novusbio.com/reviews/submit/NBP2-49890)

Earn gift cards/discounts by submitting a publication using this product:  
[www.novusbio.com/publications](http://www.novusbio.com/publications)

