

Product Datasheet

SETD1A Antibody NBP2-49281

Unit Size: 0.1 ml

Store at 4C short term. Aliquot and store at -20C long term. Avoid freeze-thaw cycles.

www.novusbio.com



technical@novusbio.com

Protocols, Publications, Related Products, Reviews, Research Tools and Images at:
www.novusbio.com/NBP2-49281

Updated 12/27/2022 v.20.1

Earn rewards for product
reviews and publications.

Submit a publication at www.novusbio.com/publications

Submit a review at www.novusbio.com/reviews/destination/NBP2-49281



NBP2-49281**SETD1A Antibody****Product Information**

Unit Size	0.1 ml
Concentration	Concentrations vary lot to lot. See vial label for concentration. If unlisted please contact technical services.
Storage	Store at 4C short term. Aliquot and store at -20C long term. Avoid freeze-thaw cycles.
Clonality	Polyclonal
Preservative	0.02% Sodium Azide
Isotype	IgG
Purity	Immunogen affinity purified
Buffer	PBS (pH 7.2) and 40% Glycerol

Product Description

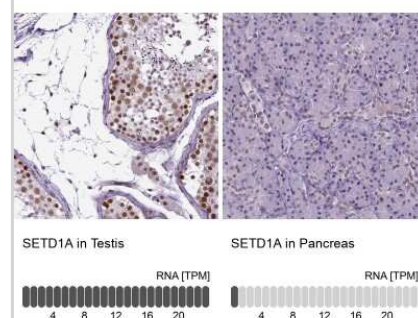
Host	Rabbit
Gene ID	9739
Gene Symbol	SETD1A
Species	Human
Reactivity Notes	Mouse (88%), Rat (89%).
Immunogen	This antibody was developed against a recombinant protein corresponding to amino acids: SQFRSSDANYPAYYESWNRYSYPPRRATREEPPGAPFAENTAERFPPS YTSYLPPEPSRPTDQDYRPPASEA

Product Application Details

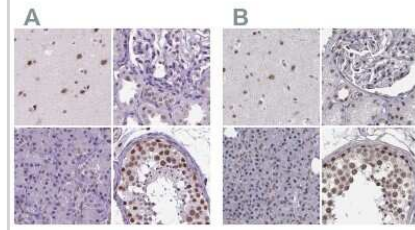
Applications	Immunohistochemistry, Immunohistochemistry-Paraffin
Recommended Dilutions	Immunohistochemistry 1:200 - 1:500, Immunohistochemistry-Paraffin 1:200 - 1:500
Application Notes	For IHC-Paraffin, HIER pH 6 retrieval is recommended.

Images

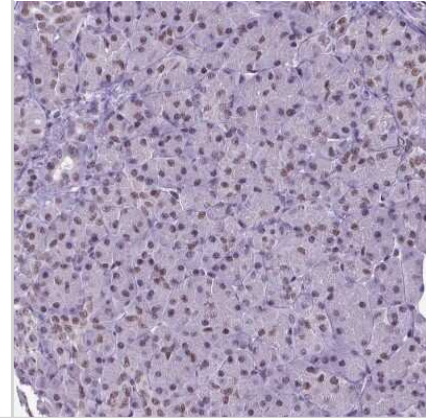
Immunohistochemistry-Paraffin: SETD1A Antibody [NBP2-49281] - Staining in human testis and pancreas tissues using anti-SETD1A antibody. Corresponding SETD1A RNA-seq data are presented for the same tissues.



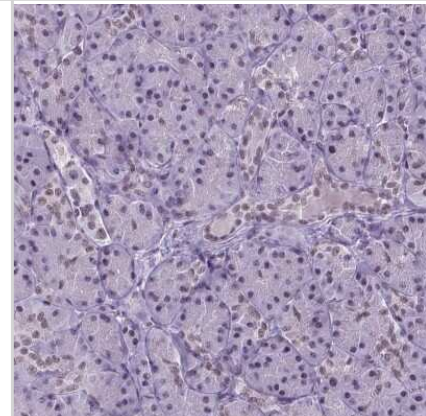
Immunohistochemistry-Paraffin: SETD1A Antibody [NBP2-49281] - Staining of human cerebral cortex, kidney, pancreas and testis using Anti-SETD1A antibody NBP2-49281 (A) shows similar protein distribution across tissues to independent antibody NBP1-81513 (B).



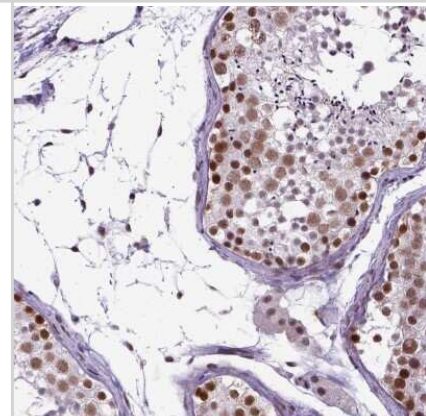
Immunohistochemistry-Paraffin: SETD1A Antibody [NBP2-49281] - Staining of human Pancreas shows moderate nuclear positivity in exocrine glandular cells.



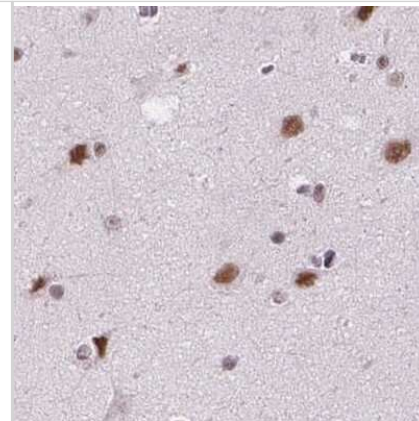
Immunohistochemistry-Paraffin: SETD1A Antibody [NBP2-49281] - Staining of human pancreas shows low expression as expected.



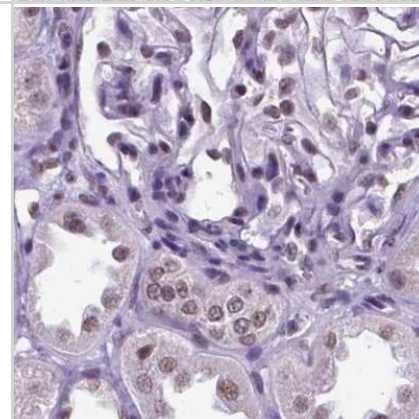
Immunohistochemistry-Paraffin: SETD1A Antibody [NBP2-49281] - Staining of human testis shows high expression.



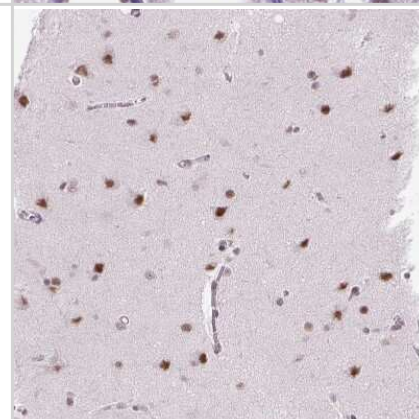
Immunohistochemistry-Paraffin: SETD1A Antibody [NBP2-49281] - Staining of human cerebral cortex.



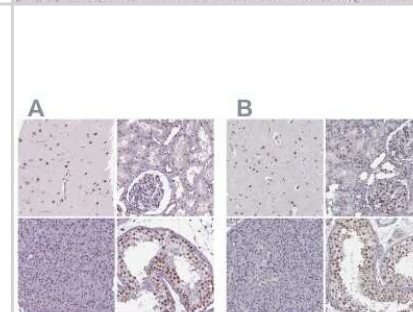
Immunohistochemistry-Paraffin: SETD1A Antibody [NBP2-49281] - Staining of human kidney.



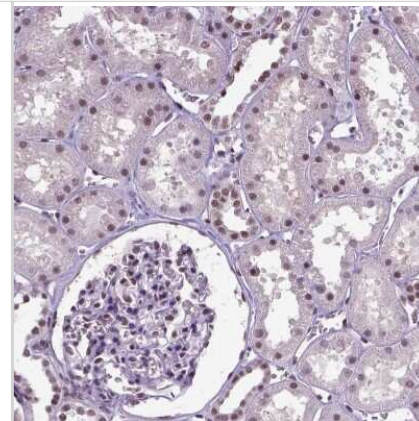
Immunohistochemistry-Paraffin: SETD1A Antibody [NBP2-49281] - Staining of human Cerebral cortex shows moderate nuclear positivity in neuronal and glial cells.



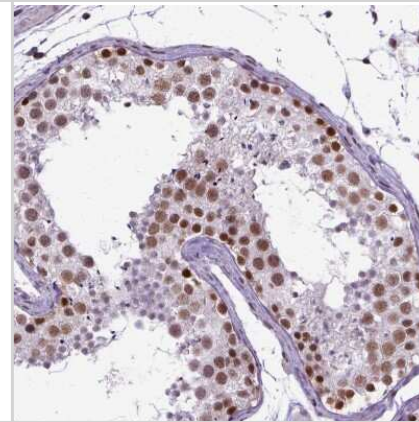
Immunohistochemistry-Paraffin: SETD1A Antibody [NBP2-49281] - Staining of human cerebral cortex, kidney, pancreas and testis using Anti-SETD1A antibody NBP2-49281 (A) shows similar protein distribution across tissues to independent antibody NBP1-81513 (B).



Immunohistochemistry-Paraffin: SETD1A Antibody [NBP2-49281] - Staining of human Kidney shows moderate nuclear positivity in cells in tubules and glomeruli.



Immunohistochemistry-Paraffin: SETD1A Antibody [NBP2-49281] - Staining of human Testis shows strong nuclear positivity in cells in seminiferous ducts.





Novus Biologicals USA

10730 E. Briarwood Avenue
Centennial, CO 80112
USA

Phone: 303.730.1950
Toll Free: 1.888.506.6887
Fax: 303.730.1966
novus@novusbio.com

Bio-Techne Canada

21 Canmotor Ave
Toronto, ON M8Z 4E6
Canada

Phone: 905.827.6400
Toll Free: 855.668.8722
Fax: 905.827.6402
canada.inquires@bio-techne.com

Bio-Techne Ltd

19 Barton Lane
Abingdon Science Park
Abingdon, OX14 3NB, United Kingdom
Phone: (44) (0) 1235 529449
Free Phone: 0800 37 34 15
Fax: (44) (0) 1235 533420
info.EMEA@bio-techne.com

General Contact Information

www.novusbio.com
Technical Support: technical@novusbio.com
Orders: orders@novusbio.com
General: novus@novusbio.com

Products Related to NBP2-49281

NBP2-49281PEP	SETD1A Recombinant Protein Antigen
HAF008	Goat anti-Rabbit IgG Secondary Antibody [HRP]
NB7160	Goat anti-Rabbit IgG (H+L) Secondary Antibody [HRP]
NBP2-24891	Rabbit IgG Isotype Control

Limitations

This product is for research use only and is not approved for use in humans or in clinical diagnosis. Primary Antibodies are guaranteed for 1 year from date of receipt.

For more information on our 100% guarantee, please visit www.novusbio.com/guarantee

Earn gift cards/discounts by submitting a review: www.novusbio.com/reviews/submit/NBP2-49281

Earn gift cards/discounts by submitting a publication using this product:
www.novusbio.com/publications

