

Product Datasheet

CD30/TNFRSF8 Antibody (Ber-H2 + CD30/412) - IHC- Prediluted NBP2-48314

Unit Size: 7 ml

Store at 4C.

www.novusbio.com



technical@novusbio.com

Protocols, Publications, Related Products, Reviews, Research Tools and Images at:
www.novusbio.com/NBP2-48314

Updated 6/1/2022 v.20.1

**Earn rewards for product
reviews and publications.**

Submit a publication at www.novusbio.com/publications

Submit a review at www.novusbio.com/reviews/destination/NBP2-48314

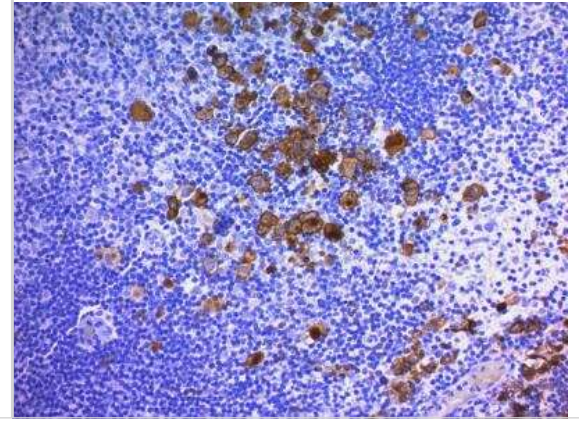


NBP2-48314**CD30/TNFRSF8 Antibody (Ber-H2 + CD30/412) - IHC-Prediluted**

Product Information	
Unit Size	7 ml
Concentration	This product is unpurified. The exact concentration of antibody is not quantifiable.
Storage	Store at 4C.
Clonality	Monoclonal
Clone	Ber-H2 + CD30/412
Preservative	0.05% Sodium Azide
Isotype	IgG1 Kappa/IgG1 Kappa
Purity	Tissue culture supernatant
Buffer	Tissue culture supernatant
Product Description	
Host	Mouse
Gene ID	943
Gene Symbol	TNFRSF8
Species	Human
Marker	Hodgkin & Reed-Sternberg Cell Marker
Specificity/Sensitivity	Recognizes a single chain glycoprotein of 105/120kDa, identified as CD30/Ki-1. CD30 is synthesized as a 90kDa precursor, which is processed in the Golgi complex into a membrane-bound phosphorylated mature 105/120kDa glycoprotein. In Hodgkins disease, CD30/Ki-1 antigen is expressed by mononuclear-Hodgkin and multinucleated Reed-Sternberg cells. It is also expressed by the tumor cells of a majority of anaplastic large cell lymphomas as well as by a varying proportion of activated T and B cells. This monoclonal antibody distinguishes large cell lymphomas derived from activated lymphoid cells from histiocytic malignancies and lymphomas derived from resting and precursor lymphoid cells or from anaplastic carcinomas. About one third of the Ki-1 positive lymphomas lack the leukocyte common antigen (CD45).
Immunogen	Co cell line established from a patient with Hodgkin's disease of T-cell lineage (Ber-H2); human CD30 recombinant protein (CD30/412)
Notes	The prediluted antibody does not require any mixing, dilution, reconstitution, or titration; the antibody is ready-to-use and optimized for staining.
Product Application Details	
Applications	Immunohistochemistry, Immunohistochemistry-Paraffin
Recommended Dilutions	Immunohistochemistry, Immunohistochemistry-Paraffin
Application Notes	Visualization of the antigen present in tissue sections is accomplished in a multi-step immunohistochemical staining process, in conjunction with a horseradish peroxidase (HRP) or alkaline phosphatase (AP) linked detection system. Positive control: Lung, Muscle. The 7mL size is a pre-diluted size and no additional dilutions are required before using this item for the intended application.

Images

Immunohistochemistry-Paraffin: CD30/TNFRSF8 Antibody (Ber-H2 + CD30/412) - IHC-Prediluted [NBP2-48314] - Formalin-fixed, paraffin-embedded human Hodgkin's Lymphoma stained with CD30 Monoclonal Antibody (Ber-H2 + CD30/412).





Novus Biologicals USA

10730 E. Briarwood Avenue
Centennial, CO 80112
USA

Phone: 303.730.1950
Toll Free: 1.888.506.6887
Fax: 303.730.1966
novus@novusbio.com

Bio-Techne Canada

21 Canmotor Ave
Toronto, ON M8Z 4E6
Canada

Phone: 905.827.6400
Toll Free: 855.668.8722
Fax: 905.827.6402
canada.inquires@bio-techne.com

Bio-Techne Ltd

19 Barton Lane
Abingdon Science Park
Abingdon, OX14 3NB, United Kingdom
Phone: (44) (0) 1235 529449
Free Phone: 0800 37 34 15
Fax: (44) (0) 1235 533420
info.EMEA@bio-techne.com

General Contact Information

www.novusbio.com
Technical Support: technical@novusbio.com
Orders: orders@novusbio.com
General: novus@novusbio.com

Limitations

This product is for research use only and is not approved for use in humans or in clinical diagnosis. Primary Antibodies are guaranteed for 1 year from date of receipt.

For more information on our 100% guarantee, please visit www.novusbio.com/guarantee

Earn gift cards/discounts by submitting a review: www.novusbio.com/reviews/submit/NBP2-48314

Earn gift cards/discounts by submitting a publication using this product:
www.novusbio.com/publications

