

Product Datasheet

Myosin heavy chain 11 Antibody (MYH11/923 + SMMS-1) - IHC-Prediluted NBP2-48150

Unit Size: 7 ml

Store at 4C.

www.novusbio.com



technical@novusbio.com

Protocols, Publications, Related Products, Reviews, Research Tools and Images at:
www.novusbio.com/NBP2-48150

Updated 6/14/2023 v.20.1

Earn rewards for product
reviews and publications.

Submit a publication at www.novusbio.com/publications

Submit a review at www.novusbio.com/reviews/destination/NBP2-48150



NBP2-48150

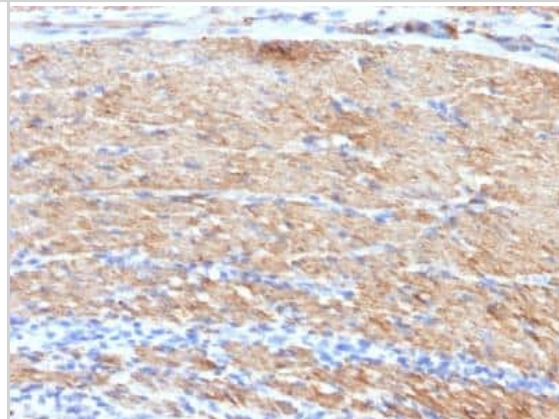
Myosin heavy chain 11 Antibody (MYH11/923 + SMMS-1) - IHC-Prediluted

Product Information	
Unit Size	7 ml
Concentration	Please see the vial label for concentration. If unlisted please contact technical services.
Storage	Store at 4C.
Clonality	Monoclonal
Clone	MYH11/923 + SMMS-1
Preservative	0.05% Sodium Azide
Isotype	IgG1 Kappa/IgG1 Kappa
Purity	Protein A or G purified
Buffer	10 mM PBS with 0.05% BSA
Product Description	
Description	The prediluted antibody does not require any mixing, dilution, reconstitution, or titration; the antibody is ready-to-use and optimized for staining.
Host	Mouse
Gene ID	4629
Gene Symbol	MYH11
Species	Human, Rat
Reactivity Notes	Predicted to have broad species reactivity.
Marker	Leiomyosarcoma & Myoepithelial Cell Marker
Specificity/Sensitivity	Smooth muscle myosin heavy chain (SM-MHC) is a cytoplasmic structural protein, which is a major component of the contractile apparatus in smooth muscle cells. Expression of smooth muscle myosin is developmentally regulated, appearing early in smooth muscle development, and is specific for smooth muscle development. Two isoforms of smooth muscle myosin heavy chain have been identified, designated MHC-1 and MHC-2. The antibody may be useful for the study of breast tumors as the presence of an intact layer of myoepithelial cells is an important feature, which may distinguish benign breast lesions and carcinoma in situ from invasive tumors.
Immunogen	Recombinant human Myosin heavy chain 11 protein (Myosin heavy chain 11/923); Human uterus extract (SMMS-1) (Uniprot: P35749)
Product Application Details	
Applications	Immunohistochemistry, Immunohistochemistry-Paraffin
Recommended Dilutions	Immunohistochemistry, Immunohistochemistry-Paraffin
Application Notes	Immunohistochemistry (Formalin-fixed): 1-2ug/ml for 30 minutes at RT. Staining of formalin-fixed tissues requires heating tissue sections in 10mM Tris with 1mM EDTA, pH 9.0, for 45 min at 95C followed by cooling at RT for 20 minutes. Optimal dilution for a specific application should be determined.

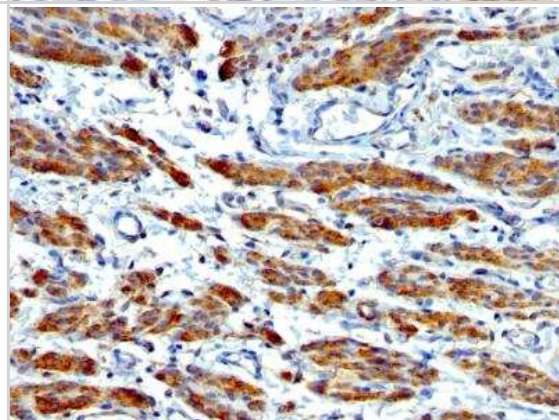


Images

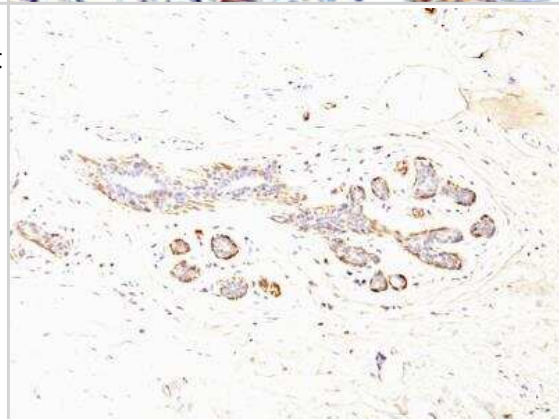
Immunohistochemistry-Paraffin: Myosin heavy chain 11 Antibody (MYH11/923 + SMMS-1) - IHC-Prediluted [NBP2-48150] - Human Colon Carcinoma stained with SM-MHC MAb (MYH11/923 + SMMS-1).



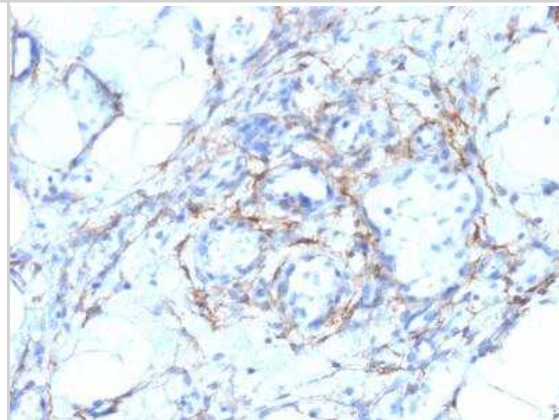
Immunohistochemistry-Paraffin: Myosin heavy chain 11 Antibody (MYH11/923 + SMMS-1) - IHC-Prediluted [NBP2-48150] - Human Leiomyosarcoma stained with SM-MHC Monoclonal Antibody (MYH11/923 + SMMS-1).



Immunohistochemistry-Paraffin: Myosin heavy chain 11 Antibody (MYH11/923 + SMMS-1) - IHC-Prediluted [NBP2-48150] - Human Breast Carcinoma stained with SM-MHC Monoclonal Antibody (MYH11/923 + SMMS-1).



Immunohistochemistry-Paraffin: Myosin heavy chain 11 Antibody (MYH11/923 + SMMS-1) - IHC-Prediluted [NBP2-48150] - Human Angiosarcoma stained with SM-MHC Monoclonal Antibody (MYH11/923 + SMMS-1).





Novus Biologicals USA

10730 E. Briarwood Avenue
Centennial, CO 80112
USA

Phone: 303.730.1950
Toll Free: 1.888.506.6887
Fax: 303.730.1966
novus@novusbio.com

Bio-Techne Canada

21 Canmotor Ave
Toronto, ON M8Z 4E6
Canada

Phone: 905.827.6400
Toll Free: 855.668.8722
Fax: 905.827.6402
canada.inquires@bio-techne.com

Bio-Techne Ltd

19 Barton Lane
Abingdon Science Park
Abingdon, OX14 3NB, United Kingdom
Phone: (44) (0) 1235 529449
Free Phone: 0800 37 34 15
Fax: (44) (0) 1235 533420
info.EMEA@bio-techne.com

General Contact Information

www.novusbio.com
Technical Support: technical@novusbio.com
Orders: orders@novusbio.com
General: novus@novusbio.com

Products Related to NBP2-48150

HAF007	Goat anti-Mouse IgG Secondary Antibody [HRP]
NB720-B	Rabbit anti-Mouse IgG (H+L) Secondary Antibody [Biotin]
NBP1-87025PEP	Myosin heavy chain 11 Recombinant Protein Antigen
H00027130-P02-10ug	Recombinant Human Inversin GST (N-Term) Protein

Limitations

This product is for research use only and is not approved for use in humans or in clinical diagnosis. Primary Antibodies are guaranteed for 1 year from date of receipt.

For more information on our 100% guarantee, please visit www.novusbio.com/guarantee

Earn gift cards/discounts by submitting a review: www.novusbio.com/reviews/submit/NBP2-48150

Earn gift cards/discounts by submitting a publication using this product:
www.novusbio.com/publications

