

# Product Datasheet

## **S100A1 Antibody (S100A1/1942) - Azide and BSA Free NBP2-47924-0.1mg**

Unit Size: 0.1 mg

Store at 4C short term. Aliquot and store at -20C long term. Avoid freeze-thaw cycles.

[www.novusbio.com](http://www.novusbio.com)



[technical@novusbio.com](mailto:technical@novusbio.com)

Protocols, Publications, Related Products, Reviews, Research Tools and Images at:  
[www.novusbio.com/NBP2-47924](http://www.novusbio.com/NBP2-47924)

Updated 10/23/2024 v.20.1

Earn rewards for product  
reviews and publications.

Submit a publication at [www.novusbio.com/publications](http://www.novusbio.com/publications)

Submit a review at [www.novusbio.com/reviews/destination/NBP2-47924](http://www.novusbio.com/reviews/destination/NBP2-47924)



**NBP2-47924-0.1mg**

S100A1 Antibody (S100A1/1942) - Azide and BSA Free

Product Information	
Unit Size	0.1 mg
Concentration	0.2 mg/ml
Storage	Store at 4C short term. Aliquot and store at -20C long term. Avoid freeze-thaw cycles.
Clonality	Monoclonal
Clone	S100A1/1942
Preservative	No Preservative
Isotype	IgG1 Kappa
Purity	Protein A or G purified
Buffer	10 mM PBS with 0.05% BSA
Product Description	
Description	Purified from Bioreactor Concentrate by Protein A or G. Prepared in 10 mM PBS WITHOUT BSA & azide at 1.0 mg/ml.
Host	Mouse
Gene ID	6271
Gene Symbol	S100A1
Species	Human
Marker	Astrocyte Marker
Specificity/Sensitivity	The family of EF-hand type Ca <sup>2+</sup> -binding proteins includes calbindin, S-100 alpha and beta, calgranulins, B and C, and the parvalbumin family members, including parvalbumin alpha and parvalbumin beta. The S-100 protein is involved in the regulation of cellular processes such as cell cycle progression and differentiation. S-100 protein may function in the activation of Ca <sup>2+</sup> induced Ca <sup>2+</sup> release, inhibition of microtubule assembly and inhibition of protein kinase C mediated phosphorylation. Two S-100 subunits, sharing 60% sequence identity, have been described as S-100 alpha chain and S-100 beta chain. Three S-100 dimeric forms have been characterized, differing in their subunit composition of two alpha chains, two beta chains or one alpha and one beta chain. S-100 localizes to the cytoplasm and nuclei of astrocytes, Schwann s cells, ependymomas and astroglomas. S-100 is also detected in almost all benign naevi, malignant melanocytic tumours and in Langerhans cells in the skin. Calbindin, S-100 proteins and parvalbumin proteins are each expressed in neural tissues. In addition, S-100 alpha and beta are present in a variety of other tissues and calbindin is present in intestine and kidney.
Immunogen	Recombinant human full-length S100A1 protein
Product Application Details	
Applications	Western Blot, Flow Cytometry, Immunohistochemistry, Immunohistochemistry-Paraffin, Protein Array, CyTOF-ready, Immunofluorescence
Recommended Dilutions	Western Blot 0.5 - 1.0 ug/ml, Flow Cytometry 0.5 - 1 ug/million cells in 0.1 ml, Immunohistochemistry, Immunohistochemistry-Paraffin 0.25 - 0.5 ug/ml, Protein Array, Immunofluorescence 1 - 2 ug/ml, CyTOF-ready

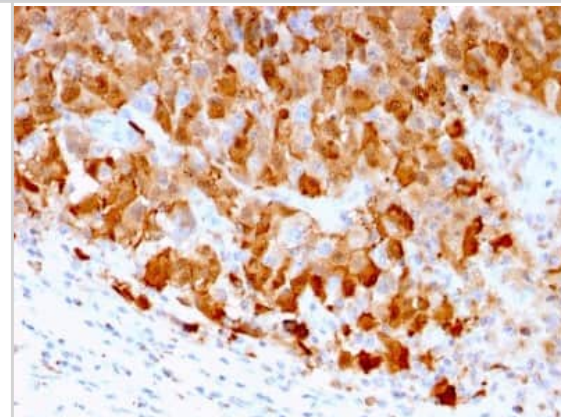


**Application Notes**

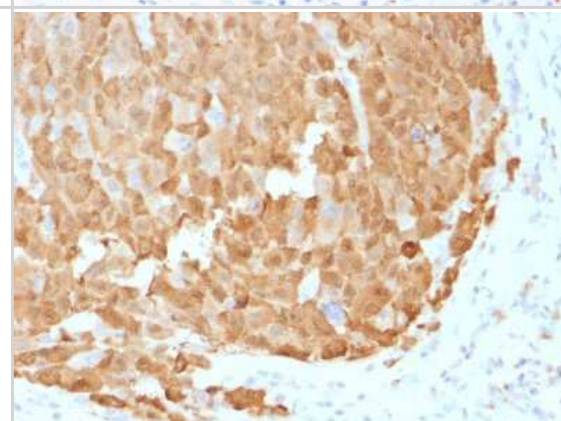
Immunohistochemistry (Formalin-fixed or Frozen): 1-2ug/ml for 30 minutes at RT. Staining of formalin-fixed tissues requires heating tissue sections in 10mM Tris with 1mM EDTA, pH 9.0, for 45 min at 95C followed by cooling at RT for 20 minutes.  
Optimal dilution for a specific application should be determined.

**Images**

Immunohistochemistry-Paraffin: S100A1 Antibody (S100A1/1012) - Azide and BSA Free [NBP2-47924] - Formalin-fixed, paraffin-embedded human Melanoma stained with S100A1 Mouse Monoclonal Antibody (S100A1/1942).



Immunohistochemistry-Paraffin: S100A1 Antibody (S100A1/1012) - Azide and BSA Free [NBP2-47924] - Formalin-fixed, paraffin-embedded human Melanoma stained with S100A1 Mouse Monoclonal Antibody (S100A1/1942).



Protein Array: S100A1 Antibody (S100A1/1012) - Azide and BSA Free [NBP2-47924] - Analysis of Protein Array containing more than 19,000 full-length human proteins using S100A1 Mouse Monoclonal Antibody (S100A1/1942).





### **Novus Biologicals USA**

10730 E. Briarwood Avenue  
Centennial, CO 80112  
USA  
Phone: 303.730.1950  
Toll Free: 1.888.506.6887  
Fax: 303.730.1966  
nb-customerservice@bio-techne.com

### **Bio-Techne Canada**

21 Canmotor Ave  
Toronto, ON M8Z 4E6  
Canada  
Phone: 905.827.6400  
Toll Free: 855.668.8722  
Fax: 905.827.6402  
canada.inquires@bio-techne.com

### **Bio-Techne Ltd**

19 Barton Lane  
Abingdon Science Park  
Abingdon, OX14 3NB, United Kingdom  
Phone: (44) (0) 1235 529449  
Free Phone: 0800 37 34 15  
Fax: (44) (0) 1235 533420  
info.EMEA@bio-techne.com

### **General Contact Information**

[www.novusbio.com](http://www.novusbio.com)  
Technical Support: nb-technical@bio-techne.com  
Orders: nb-customerservice@bio-techne.com  
General: novus@novusbio.com

### **Products Related to NBP2-47924-0.1mg**

HAF007	Goat anti-Mouse IgG Secondary Antibody [HRP]
NB720-B	Rabbit anti-Mouse IgG (H+L) Secondary Antibody [Biotin]
NBP1-43319-0.5mg	Mouse IgG1 Kappa Isotype Control (P3.6.2.8.1)
NBP1-72335-0.1mg	Recombinant Mouse S100A1 His Protein

### **Limitations**

This product is for research use only and is not approved for use in humans or in clinical diagnosis. Primary Antibodies are guaranteed for 1 year from date of receipt.

For more information on our 100% guarantee, please visit [www.novusbio.com/guarantee](http://www.novusbio.com/guarantee)

Earn gift cards/discounts by submitting a review: [www.novusbio.com/reviews/submit/NBP2-47924](http://www.novusbio.com/reviews/submit/NBP2-47924)

Earn gift cards/discounts by submitting a publication using this product:  
[www.novusbio.com/publications](http://www.novusbio.com/publications)

