

Product Datasheet

Myosin heavy chain 11 Antibody (MYH11/923 + SMMS-1) - Azide and BSA Free NBP2-47901-0.1mg

Unit Size: 0.1 mg

Store at -20 to -80C. Avoid freeze-thaw cycles.

www.novusbio.com



technical@novusbio.com

Protocols, Publications, Related Products, Reviews, Research Tools and Images at:
www.novusbio.com/NBP2-47901

Updated 7/16/2024 v.20.1

Earn rewards for product
reviews and publications.

Submit a publication at www.novusbio.com/publications

Submit a review at www.novusbio.com/reviews/destination/NBP2-47901



NBP2-47901-0.1mg

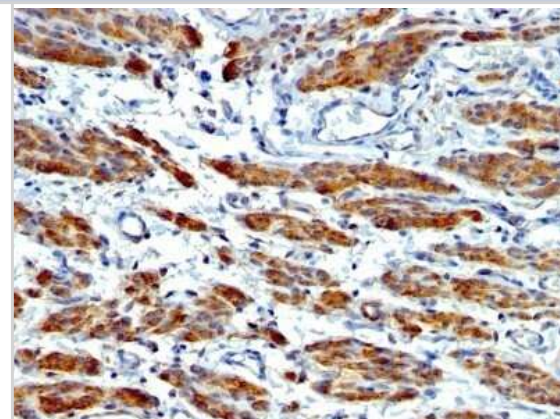
Myosin heavy chain 11 Antibody (MYH11/923 + SMMS-1) - Azide and BSA Free

| Product Information | |
|-----------------------------|--|
| Unit Size | 0.1 mg |
| Concentration | 1.0 mg/ml |
| Storage | Store at -20 to -80C. Avoid freeze-thaw cycles. |
| Clonality | Monoclonal |
| Clone | MYH11/923 + SMMS-1 |
| Preservative | No Preservative |
| Isotype | IgG1 Kappa/IgG1 Kappa |
| Purity | Protein A or G purified |
| Buffer | 10 mM PBS |
| Product Description | |
| Description | 1.0 mg/ml of antibody purified from Bioreactor Concentrate by Protein A/G. Prepared in 10mM PBS WITHOUT BSA & azide. Also available at 200 ug/ml WITH BSA & azide (NBP2-44534). Antibody with azide - store at 2 to 8C. Antibody without azide - store at -20 to -80C. |
| Host | Mouse |
| Gene ID | 4629 |
| Gene Symbol | MYH11 |
| Species | Human, Rat |
| Reactivity Notes | Predicted to have broad species reactivity. |
| Marker | Leiomyosarcoma & Myoepithelial Cell Marker |
| Specificity/Sensitivity | Smooth muscle myosin heavy chain (SM-MHC) is a cytoplasmic structural protein, which is a major component of the contractile apparatus in smooth muscle cells. Expression of smooth muscle myosin is developmentally regulated, appearing early in smooth muscle development, and is specific for smooth muscle development. Two isoforms of smooth muscle myosin heavy chain have been identified, designated MHC-1 and MHC-2. The antibody may be useful for the study of breast tumors as the presence of an intact layer of myoepithelial cells is an important feature, which may distinguish benign breast lesions and carcinoma in situ from invasive tumors. |
| Immunogen | Recombinant human Myosin heavy chain 11 protein (Myosin heavy chain 11/923); Human uterus extract (SMMS-1) (Uniprot: P35749) |
| Product Application Details | |
| Applications | Flow Cytometry, Immunocytochemistry/ Immunofluorescence, Immunohistochemistry, Immunohistochemistry-Paraffin, CyTOF-ready, Immunofluorescence |
| Recommended Dilutions | Flow Cytometry 0.5 - 1 ug/million cells in 0.1 ml, Immunohistochemistry, Immunocytochemistry/ Immunofluorescence 1-2 ug/ml, Immunohistochemistry-Paraffin 0.5 - 1.0 ug/ml, Immunofluorescence 0.5 - 1.0 ug/ml, CyTOF-ready |
| Application Notes | Immunohistochemistry (Formalin-fixed): 1-2ug/ml for 30 minutes at RT. Staining of formalin-fixed tissues requires heating tissue sections in 10mM Tris with 1mM EDTA, pH 9.0, for 45 min at 95C followed by cooling at RT for 20 minutes. Optimal dilution for a specific application should be determined. |

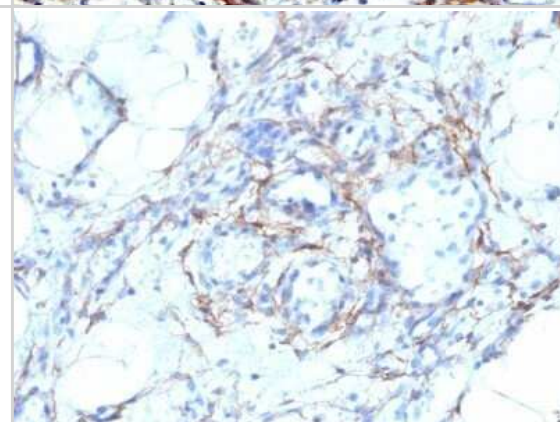


Images

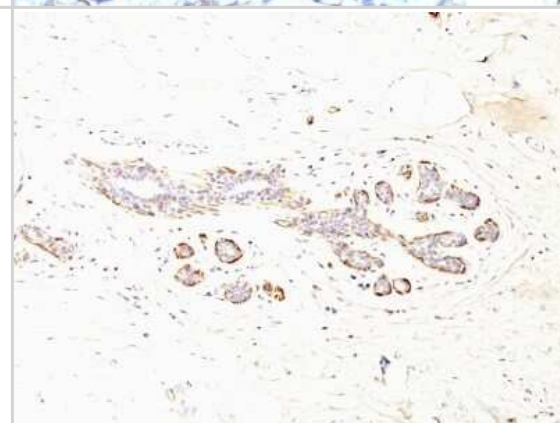
Immunohistochemistry-Paraffin: Myosin heavy chain 11 Antibody (MYH11/923 + SMMS-1) - Azide and BSA Free [NBP2-47901] - Human Leiomyosarcoma stained with SM-MHC Monoclonal Antibody (MYH11/923 + SMMS-1).



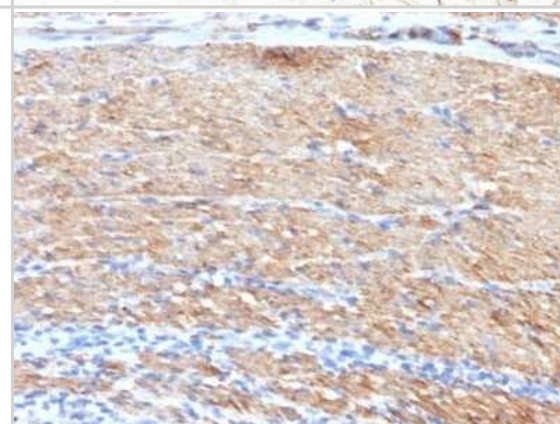
Immunohistochemistry-Paraffin: Myosin heavy chain 11 Antibody (MYH11/923 + SMMS-1) - Azide and BSA Free [NBP2-47901] - Human Angiosarcoma stained with SM-MHC Monoclonal Antibody (MYH11/923 + SMMS-1).



Immunohistochemistry-Paraffin: Myosin heavy chain 11 Antibody (MYH11/923 + SMMS-1) - Azide and BSA Free [NBP2-47901] - Human Breast Carcinoma stained with SM-MHC Monoclonal Antibody (MYH11/923 + SMMS-1).



Immunohistochemistry-Paraffin: Myosin heavy chain 11 Antibody (MYH11/923 + SMMS-1) - Azide and BSA Free [NBP2-47901] - Human Colon Carcinoma stained with SM-MHC Monoclonal Antibody (MYH11/923 + SMMS-1).



**Novus Biologicals USA**

10730 E. Briarwood Avenue
Centennial, CO 80112
USA
Phone: 303.730.1950
Toll Free: 1.888.506.6887
Fax: 303.730.1966
nb-customerservice@bio-techne.com

Bio-Techne Canada

21 Canmotor Ave
Toronto, ON M8Z 4E6
Canada
Phone: 905.827.6400
Toll Free: 855.668.8722
Fax: 905.827.6402
canada.inquires@bio-techne.com

Bio-Techne Ltd

19 Barton Lane
Abingdon Science Park
Abingdon, OX14 3NB, United Kingdom
Phone: (44) (0) 1235 529449
Free Phone: 0800 37 34 15
Fax: (44) (0) 1235 533420
info.EMEA@bio-techne.com

General Contact Information

www.novusbio.com
Technical Support: nb-technical@bio-techne.com
Orders: nb-customerservice@bio-techne.com
General: novus@novusbio.com

Products Related to NBP2-47901-0.1mg

| | |
|--------------------|---|
| HAF007 | Goat anti-Mouse IgG Secondary Antibody [HRP] |
| NB720-B | Rabbit anti-Mouse IgG (H+L) Secondary Antibody [Biotin] |
| NBP1-87025PEP | Myosin heavy chain 11 Recombinant Protein Antigen |
| H00027130-P02-10ug | Recombinant Human Inversin GST (N-Term) Protein |

Limitations

This product is for research use only and is not approved for use in humans or in clinical diagnosis. Primary Antibodies are guaranteed for 1 year from date of receipt.

For more information on our 100% guarantee, please visit www.novusbio.com/guarantee

Earn gift cards/discounts by submitting a review: www.novusbio.com/reviews/submit/NBP2-47901

Earn gift cards/discounts by submitting a publication using this product:
www.novusbio.com/publications

