

# Product Datasheet

## EpCAM/TROP1 Antibody (EGP40/1110) - (ECD) - Azide and BSA Free NBP2-47873-0.1mg

Unit Size: 0.1 mg

Store at -20 to -80C. Avoid freeze-thaw cycles.

[www.novusbio.com](http://www.novusbio.com)



[technical@novusbio.com](mailto:technical@novusbio.com)

### Publications: 1

Protocols, Publications, Related Products, Reviews, Research Tools and Images at:  
[www.novusbio.com/NBP2-47873](http://www.novusbio.com/NBP2-47873)

Updated 7/16/2024 v.20.1

Earn rewards for product  
reviews and publications.

Submit a publication at [www.novusbio.com/publications](http://www.novusbio.com/publications)

Submit a review at [www.novusbio.com/reviews/destination/NBP2-47873](http://www.novusbio.com/reviews/destination/NBP2-47873)



**NBP2-47873-0.1mg**

EpCAM/TROP1 Antibody (EGP40/1110) - (ECD) - Azide and BSA Free

Product Information	
Unit Size	0.1 mg
Concentration	1.0 mg/ml
Storage	Store at -20 to -80C. Avoid freeze-thaw cycles.
Clonality	Monoclonal
Clone	EGP40/1110
Preservative	No Preservative
Isotype	IgG2b Kappa
Purity	Protein A or G purified
Buffer	10 mM PBS

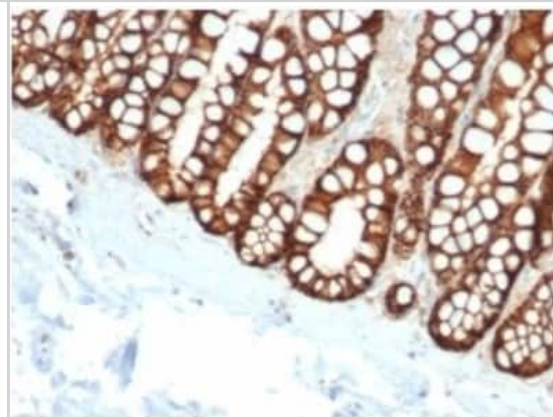
Product Description	
Description	<p>Hu-chromosome location: 2p21 Molecular weight of antigen: 40-43kDa</p> <p>1.0 mg/ml of antibody purified from Bioreactor Concentrate by Protein A/G. Prepared in 10mM PBS WITHOUT BSA &amp; azide. Also available at 200 ug/ml WITH BSA &amp; azide (NBP2-44635).</p> <p>Antibody with azide - store at 2 to 8C. Antibody without azide - store at -20 to -80 C.</p>
Host	Mouse
Gene ID	4072
Gene Symbol	EPCAM
Species	Human, Canine, Feline
Marker	Epithelial Marker
Specificity/Sensitivity	EGP40 is a 40-43kDa transmembrane epithelial glycoprotein, also identified as epithelial specific antigen (ESA), or epithelial cellular adhesion molecule (Ep-CAM). It is expressed on baso-lateral cell surface in most simple epithelia and a vast majority of carcinomas. This antibody has been used to distinguish adenocarcinoma from pleural mesothelioma and hepatocellular carcinoma. This antibody is also useful in distinguishing serous carcinomas of the ovary from mesothelioma.
Immunogen	Recombinant fragment from cytoplasmic domain (around aa 289-314) of human EpCAM/TROP1 (exact sequence is proprietary) (Uniprot: P16422 )

Product Application Details	
Applications	Western Blot, Immunocytochemistry/ Immunofluorescence, Immunohistochemistry, Immunohistochemistry-Paraffin, Protein Array
Recommended Dilutions	Western Blot, Immunohistochemistry, Immunocytochemistry/ Immunofluorescence, Immunohistochemistry-Paraffin, Protein Array
Application Notes	<p>Use in Immunocytochemistry/Immunofluorescence reported in scientific literature (PMID: 33000764).</p> <p>Immunohistochemistry (Formalin-fixed): 1-2ug/ml for 30 min at RT. Staining of formalin-fixed tissues requires heating tissue sections in 10mM Tris with 1mM EDTA, pH 9.0, for 45 min at 95C followed by cooling at RT for 20 minutes. Optimal dilution for a specific application should be determined.</p>

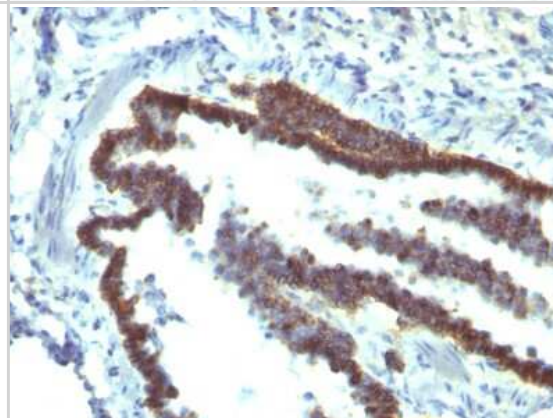


## Images

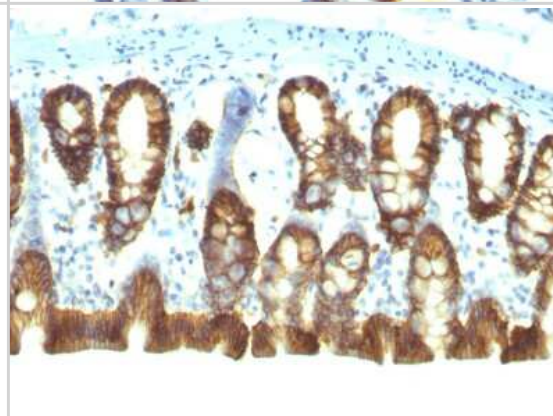
Immunohistochemistry-Paraffin: EpCAM/TROP1 Antibody (EGP40/1110) - (ECD) - Azide and BSA Free [NBP2-47873] - Formalin-fixed, paraffin-embedded feline (cat) small intestine stained with EpCAM/TROP1 Antibody (EGP40/1110) - (ECD).



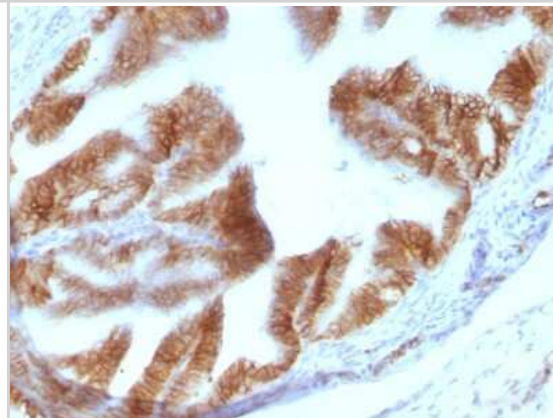
Immunohistochemistry-Paraffin: EpCAM/TROP1 Antibody (EGP40/1110) - (ECD) - Azide and BSA Free [NBP2-47873] - Formalin-fixed, paraffin-embedded Rat Lung stained



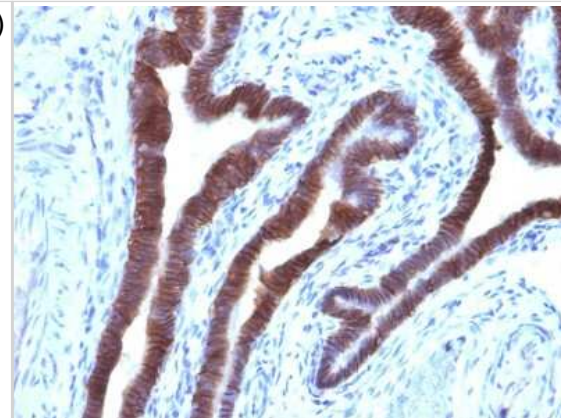
Immunohistochemistry-Paraffin: EpCAM/TROP1 Antibody (EGP40/1110) - (ECD) - Azide and BSA Free [NBP2-47873] - Formalin-fixed, paraffin-embedded Rat Colon stained



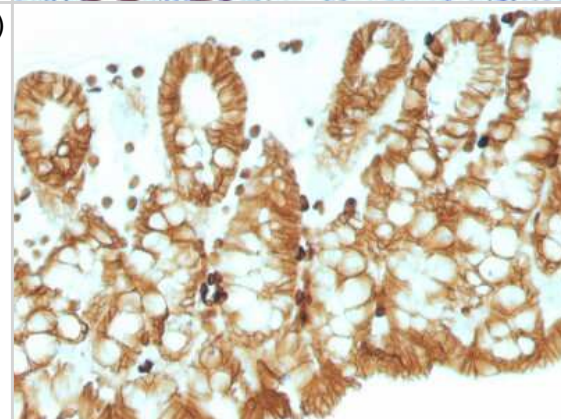
Immunohistochemistry-Paraffin: EpCAM/TROP1 Antibody (EGP40/1110) - (ECD) - Azide and BSA Free [NBP2-47873] - Formalin-fixed, paraffin-embedded Rat Oviduct stained



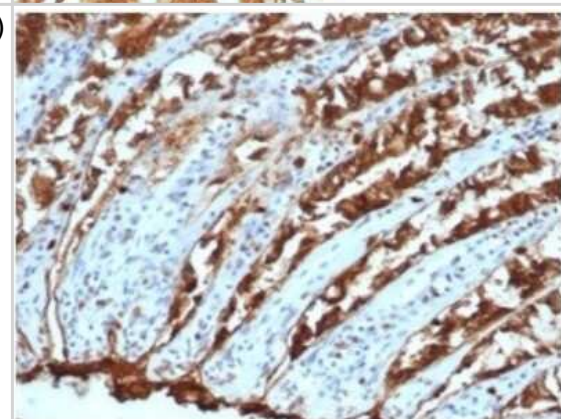
Immunohistochemistry-Paraffin: EpCAM/TROP1 Antibody (EGP40/1110) - (ECD) - Azide and BSA Free [NBP2-47873] - Formalin-fixed, paraffin-embedded Human Ovarian Carcinoma stained



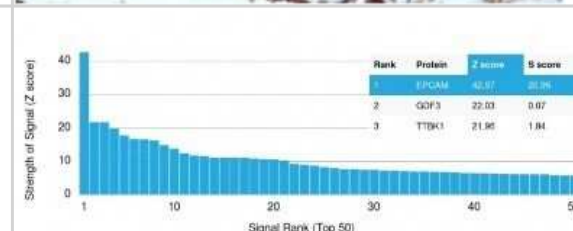
Immunohistochemistry-Paraffin: EpCAM/TROP1 Antibody (EGP40/1110) - (ECD) - Azide and BSA Free [NBP2-47873] - Formalin-fixed, paraffin-embedded Mouse Colon stained



Immunohistochemistry-Paraffin: EpCAM/TROP1 Antibody (EGP40/1110) - (ECD) - Azide and BSA Free [NBP2-47873] - Formalin-fixed, paraffin-embedded canine (dog) colon stained with EpCAM/TROP1 Antibody (EGP40/1110) - (ECD).



**Protein Array: EpCAM/TROP1 Antibody (EGP40/1110) - (ECD) - Azide and BSA Free [NBP2-47873] - Analysis of Protein Array containing >19,000 full-length human proteins using EpCAM/TROP1 Antibody (EGP40/1110)Z- and S- Score:** The Z-score represents the strength of a signal that a monoclonal antibody (MAb) (in combination with a fluorescently-tagged anti-IgG secondary antibody) produces when binding to a particular protein on the HuProt(TM) array. Z-scores are described in units of standard deviations (SDs) above the mean value of all signals generated on that array. If targets on HuProt(TM) are arranged in descending order of the Z-score, the S-score is the difference (also in units of SDs) between the Z-score. S-score therefore represents the relative target specificity of a MAb to its intended target. A MAb is considered to be specific to its intended target, if the MAb has an S-score of at least 2.5.



## Publications

Jung DJ, Byeon JH, Jeong GS Flow enhances phenotypic and maturation of adult rat liver organoids Biofabrication 2020-10-01 [PMID: 33000764] (ICC/IF, ICC/IF)

Details:

Citation using the Azide and BSA Free version of this antibody.





### **Novus Biologicals USA**

10730 E. Briarwood Avenue  
Centennial, CO 80112  
USA  
Phone: 303.730.1950  
Toll Free: 1.888.506.6887  
Fax: 303.730.1966  
nb-customerservice@bio-techne.com

### **Bio-Techne Canada**

21 Canmotor Ave  
Toronto, ON M8Z 4E6  
Canada  
Phone: 905.827.6400  
Toll Free: 855.668.8722  
Fax: 905.827.6402  
canada.inquires@bio-techne.com

### **Bio-Techne Ltd**

19 Barton Lane  
Abingdon Science Park  
Abingdon, OX14 3NB, United Kingdom  
Phone: (44) (0) 1235 529449  
Free Phone: 0800 37 34 15  
Fax: (44) (0) 1235 533420  
info.EMEA@bio-techne.com

### **General Contact Information**

[www.novusbio.com](http://www.novusbio.com)  
Technical Support: [nb-technical@bio-techne.com](mailto:nb-technical@bio-techne.com)  
Orders: [nb-customerservice@bio-techne.com](mailto:nb-customerservice@bio-techne.com)  
General: [novus@novusbio.com](mailto:novus@novusbio.com)

### **Products Related to NBP2-47873-0.1mg**

---

HAF007	Goat anti-Mouse IgG Secondary Antibody [HRP]
NB720-B	Rabbit anti-Mouse IgG (H+L) Secondary Antibody [Biotin]
NBP1-43317-0.5mg	Mouse IgG2b Kappa Light Chain Isotype Control (MG2b)
NBP2-52190-0.05mg	Recombinant Human EpCAM/TROP1 His Protein

---

### **Limitations**

This product is for research use only and is not approved for use in humans or in clinical diagnosis. Primary Antibodies are guaranteed for 1 year from date of receipt.

For more information on our 100% guarantee, please visit [www.novusbio.com/guarantee](http://www.novusbio.com/guarantee)

Earn gift cards/discounts by submitting a review: [www.novusbio.com/reviews/submit/NBP2-47873](http://www.novusbio.com/reviews/submit/NBP2-47873)

Earn gift cards/discounts by submitting a publication using this product:  
[www.novusbio.com/publications](http://www.novusbio.com/publications)

