

# Product Datasheet

## HLA DRA Antibody (169-1B5.2) [Allophycocyanin] NBP2-47722APC

Unit Size: 0.1 ml

Store at 4C in the dark.

[www.novusbio.com](http://www.novusbio.com)



[technical@novusbio.com](mailto:technical@novusbio.com)

Reviews: 1

Protocols, Publications, Related Products, Reviews, Research Tools and Images at:  
[www.novusbio.com/NBP2-47722APC](http://www.novusbio.com/NBP2-47722APC)

Updated 10/26/2023 v.20.1

Earn rewards for product  
reviews and publications.

Submit a publication at [www.novusbio.com/publications](http://www.novusbio.com/publications)

Submit a review at [www.novusbio.com/reviews/destination/NBP2-47722APC](http://www.novusbio.com/reviews/destination/NBP2-47722APC)



**NBP2-47722APC**

HLA DRA Antibody (169-1B5.2) [Allophycocyanin]

Product Information	
Unit Size	0.1 ml
Concentration	Please see the vial label for concentration. If unlisted please contact technical services.
Storage	Store at 4C in the dark.
Clonality	Monoclonal
Clone	169-1B5.2
Preservative	0.05% Sodium Azide
Isotype	IgG2b Kappa
Conjugate	Allophycocyanin
Purity	Protein A or G purified
Buffer	PBS

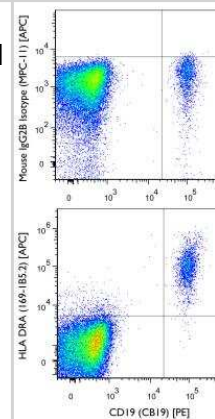
Product Description	
Description	This conjugate is made on demand. Actual recovery may vary from the stated volume of this product. The volume will be greater than or equal to the unit size stated on the datasheet.
Host	Mouse
Gene ID	3122
Gene Symbol	HLA-DRA
Species	Human, Bovine, Feline
Specificity/Sensitivity	This antibody detects a monomorphic general framework determinant of HLA-DR Class II antigen. It does not cross react with HLA-DP and HLA-DQ. HLA-DR is a heterodimeric cell surface glycoprotein comprised of a 36kDa alpha (heavy) chain and a 28kDa beta (light) chain. It is expressed on B-cells, activated T-cells, monocytes/macrophages, dendritic cells and other non-professional APCs. In conjunction with the CD3/TCR complex and CD4 molecules, HLA-DR is critical for efficient peptide presentation to CD4+ T cells. It is an excellent histiocytic marker in paraffin sections producing intense cytoplasmic staining. True histiocytic neoplasms are similarly positive. HLA-DR antigens also occur on a variety of epithelial cells and their corresponding neoplastic counterparts.
Immunogen	Human peripheral blood leukocytes (Uniprot: P01903)

Product Application Details	
Applications	Flow Cytometry, Immunocytochemistry/Immunofluorescence, CyTOF-ready, Immunofluorescence
Recommended Dilutions	Flow Cytometry, Immunocytochemistry/Immunofluorescence, Immunofluorescence, CyTOF-ready
Application Notes	Optimal dilution of this antibody should be experimentally determined.

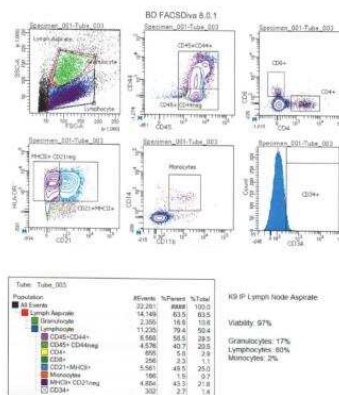


## Images

Flow Cytometry: HLA DRA Antibody (169-1B5.2) [Allophycocyanin] [NBP2-47722APC] - A surface stain was performed on human peripheral blood lymphocytes with HLA DRA (169-1B5.2) antibody NBP2-47722APC and a matched isotype control NBP2-27231APC. Cells were incubated in an antibody dilution of 0.5 ug/mL for 20 minutes at room temperature. A co-stain was performed with NBP2-26646.



Flow Cytometry: HLA DRA Antibody (169-1B5.2) [Allophycocyanin] [NBP2-47722APC] - Canine whole blood cells, image courtesy of customer.



**Novus Biologicals USA**

10730 E. Briarwood Avenue  
Centennial, CO 80112  
USA

Phone: 303.730.1950  
Toll Free: 1.888.506.6887  
Fax: 303.730.1966  
novus@novusbio.com

**Bio-Techne Canada**

21 Canmotor Ave  
Toronto, ON M8Z 4E6  
Canada  
Phone: 905.827.6400  
Toll Free: 855.668.8722  
Fax: 905.827.6402  
canada.inquires@bio-techne.com

**Bio-Techne Ltd**

19 Barton Lane  
Abingdon Science Park  
Abingdon, OX14 3NB, United Kingdom  
Phone: (44) (0) 1235 529449  
Free Phone: 0800 37 34 15  
Fax: (44) (0) 1235 533420  
info.EMEA@bio-techne.com

**General Contact Information**

www.novusbio.com  
Technical Support: technical@novusbio.com  
Orders: orders@novusbio.com  
General: novus@novusbio.com

**Products Related to NBP2-47722APC**

---

NBP1-43317APC	Mouse IgG2b Kappa Light Chain Isotype Control (MG2b) [Allophycocyanin]
NBP2-51601-0.1mg	Recombinant Human HLA DRA His Protein
210-TA-005	TNF-alpha [Unconjugated]
NBL1-11590	HLA DRA Overexpression Lysate

---

**Limitations**

This product is for research use only and is not approved for use in humans or in clinical diagnosis.  
Primary Antibodies are guaranteed for 1 year from date of receipt.

For more information on our 100% guarantee, please visit [www.novusbio.com/guarantee](http://www.novusbio.com/guarantee)

Earn gift cards/discounts by submitting a review: [www.novusbio.com/reviews/submit/NBP2-47722APC](http://www.novusbio.com/reviews/submit/NBP2-47722APC)

Earn gift cards/discounts by submitting a publication using this product:  
[www.novusbio.com/publications](http://www.novusbio.com/publications)

