

Product Datasheet

HLA DRB1 Antibody (LN-3 + HLA-DRB/1067) - Azide and BSA Free NBP2-47672-0.1mg

Unit Size: 0.1 mg

Store at -20 to -80C. Avoid freeze-thaw cycles.

www.novusbio.com



technical@novusbio.com

Protocols, Publications, Related Products, Reviews, Research Tools and Images at:
www.novusbio.com/NBP2-47672

Updated 10/23/2024 v.20.1

Earn rewards for product
reviews and publications.

Submit a publication at www.novusbio.com/publications

Submit a review at www.novusbio.com/reviews/destination/NBP2-47672



NBP2-47672-0.1mg

HLA-DRB1 Antibody (LN-3 + HLA-DRB/1067) - Azide and BSA Free

Product Information	
Unit Size	0.1 mg
Concentration	1.0 mg/ml
Storage	Store at -20 to -80C. Avoid freeze-thaw cycles.
Clonality	Monoclonal
Clone	LN-3 + HLA-DRB/1067
Preservative	No Preservative
Isotype	IgG2b Kappa
Purity	Protein A or G purified
Buffer	10 mM PBS

Product Description	
Description	1.0 mg/ml of antibody purified from Bioreactor Concentrate by Protein A/G. Prepared in 10mM PBS WITHOUT BSA & azide. Also available at 200 ug/ml WITH BSA & azide (NBP2-45316). Antibody with azide - store at 2 to 8C. Antibody without azide - store at -20 to -80C.
Host	Mouse
Gene ID	3123
Gene Symbol	HLA-DRB1
Species	Human, Monkey
Specificity/Sensitivity	This monoclonal antibody reacts with the beta-chain of HLA-DRB1 antigen, a member of MHC class II molecules. It does not cross react with HLA-DP and HLA-DQ. HLA-DR is a heterodimeric cell surface glycoprotein comprised of a 36kDa alpha (heavy) chain and a 28kDa beta (light) chain. It is expressed on B-cells, activated T-cells, monocytes/macrophages, dendritic cells and other non-professional APCs. In conjunction with the CD3/TCR complex and CD4 molecules, HLA-DR is critical for efficient peptide presentation to CD4+ T cells. It is an excellent histiocytic marker in paraffin sections producing intense cytoplasmic staining. True histiocytic neoplasms are similarly positive. HLA-DR antigens also occur on a variety of epithelial cells and their corresponding neoplastic counterparts. Loss of HLA-DR expression is related to tumor microenvironment and predicts adverse outcome in diffuse large B-cell lymphoma.
Immunogen	Activated human peripheral blood mononuclear cells (LN-3 & HLA-DRB/1067)

Product Application Details	
Applications	Western Blot, Flow Cytometry, Immunocytochemistry/ Immunofluorescence, Immunohistochemistry, Immunohistochemistry-Paraffin, CyTOF-ready, Immunofluorescence
Recommended Dilutions	Western Blot 0.5 - 1.0 ug/ml, Flow Cytometry 0.5 - 1 ug/million cells in 0.1 ml, Immunohistochemistry, Immunocytochemistry/ Immunofluorescence, Immunohistochemistry-Paraffin 0.25 - 0.5 ug/ml, Immunofluorescence 0.5 - 1.0 ug/ml, CyTOF-ready

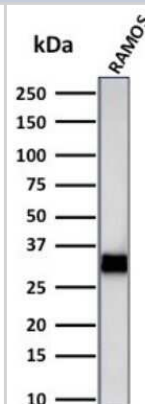


Application Notes

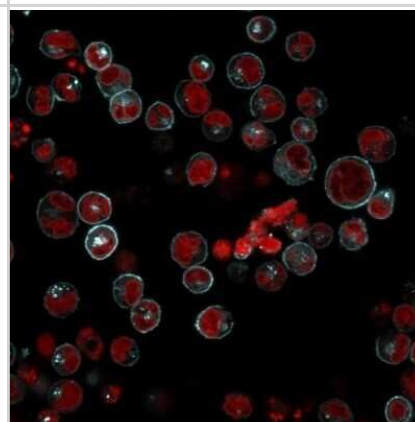
Immunohistochemistry (Formalin-fixed): 0.25-0.5ug/ml for 30 minutes at RT. Staining of formalin-fixed tissues requires heating tissue sections in 10mM Tris with 1mM EDTA, pH 9.0, for 45 min at 95C followed by cooling at RT for 20 minutes.
Optimal dilution for a specific application should be determined.

Images

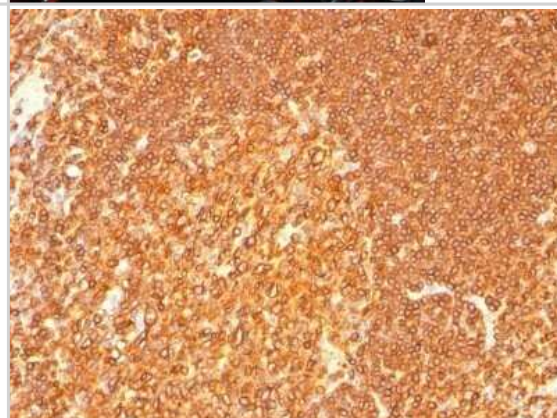
Western Blot: HLA DRB1 Antibody (LN-3 + HLA-DRB/1067) - Azide and BSA Free [NBP2-47672] - Western Blot Analysis of Ramos cell lysate using HLA DRB1 Antibody (LN-3 + HLA-DRB/1067).



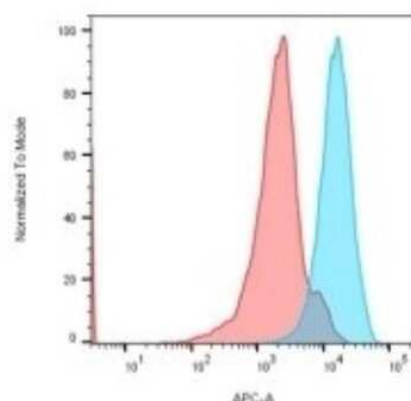
Immunocytochemistry/Immunofluorescence: HLA DRB1 Antibody (LN-3 + HLA-DRB/1067) - Azide and BSA Free [NBP2-47672] - Immunofluorescence Analysis of Raji cells labeling HLA-DR with HLA DRB1 Antibody (LN-3 + HLA-DRB/1067) conjugated with CF594 (Cyan). The nuclear counterstain is Red Dot (Red)



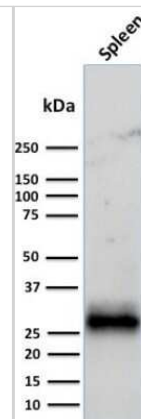
Immunohistochemistry-Paraffin: HLA DRB1 Antibody (LN-3 + HLA-DRB/1067) - Azide and BSA Free [NBP2-47672] - Human Tonsil stained with HLA-DRB Monoclonal Antibody (LN-3 + HLA-DRB/1067).



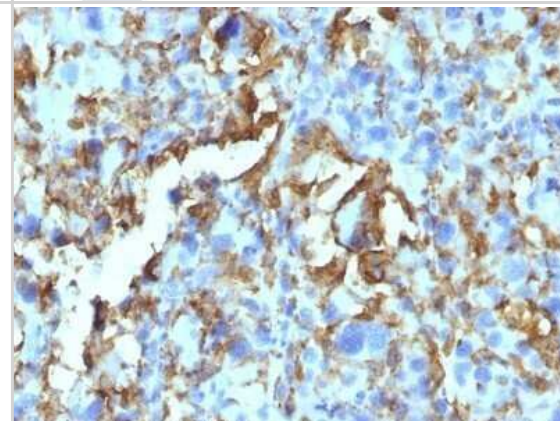
Flow Cytometry: HLA DRB1 Antibody (LN-3 + HLA-DRB/1067) - Azide and BSA Free [NBP2-47672] - Flow Cytometric Analysis of Human Raji cells using HLA DRB1 Antibody (LN-3 + HLA-DRB/1067). conjugated with APC (Blue); Isotype Control (Red).



Western Blot: HLA DRB1 Antibody (LN-3 + HLA-DRB/1067) - Azide and BSA Free [NBP2-47672] - Western Blot Analysis of Human Spleen tissue lysate using HLA DRB1 Antibody (LN-3 + HLA-DRB/1067).



Immunohistochemistry-Paraffin: HLA DRB1 Antibody (LN-3 + HLA-DRB/1067) - Azide and BSA Free [NBP2-47672] - Human Histiocytoma stained with HLA-DR Monoclonal Antibody (LN-3 + HLA-DRB/1067).





Novus Biologicals USA

10730 E. Briarwood Avenue
Centennial, CO 80112
USA
Phone: 303.730.1950
Toll Free: 1.888.506.6887
Fax: 303.730.1966
nb-customerservice@bio-techne.com

Bio-Techne Canada

21 Canmotor Ave
Toronto, ON M8Z 4E6
Canada
Phone: 905.827.6400
Toll Free: 855.668.8722
Fax: 905.827.6402
canada.inquires@bio-techne.com

Bio-Techne Ltd

19 Barton Lane
Abingdon Science Park
Abingdon, OX14 3NB, United Kingdom
Phone: (44) (0) 1235 529449
Free Phone: 0800 37 34 15
Fax: (44) (0) 1235 533420
info.EMEA@bio-techne.com

General Contact Information

www.novusbio.com
Technical Support: nb-technical@bio-techne.com
Orders: nb-customerservice@bio-techne.com
General: novus@novusbio.com

Products Related to NBP2-47672-0.1mg

HAF007	Goat anti-Mouse IgG Secondary Antibody [HRP]
NB720-B	Rabbit anti-Mouse IgG (H+L) Secondary Antibody [Biotin]
NBP1-43317-0.5mg	Mouse IgG2b Kappa Light Chain Isotype Control (MG2b)
NBP2-51599-0.1mg	Recombinant Human, HLA DRB1 His Protein

Limitations

This product is for research use only and is not approved for use in humans or in clinical diagnosis. Primary Antibodies are guaranteed for 1 year from date of receipt.

For more information on our 100% guarantee, please visit www.novusbio.com/guarantee

Earn gift cards/discounts by submitting a review: www.novusbio.com/reviews/submit/NBP2-47672

Earn gift cards/discounts by submitting a publication using this product:
www.novusbio.com/publications

