

# Product Datasheet

## Cytokeratin 8 Antibody (H1)

### NBP2-34265-0.1mg

Unit Size: 0.1 mg

Store at 4C.

[www.novusbio.com](http://www.novusbio.com)



[technical@novusbio.com](mailto:technical@novusbio.com)

Protocols, Publications, Related Products, Reviews, Research Tools and Images at:  
[www.novusbio.com/NBP2-34265](http://www.novusbio.com/NBP2-34265)

Updated 4/13/2025 v.20.1

Earn rewards for product  
reviews and publications.

Submit a publication at [www.novusbio.com/publications](http://www.novusbio.com/publications)

Submit a review at [www.novusbio.com/reviews/destination/NBP2-34265](http://www.novusbio.com/reviews/destination/NBP2-34265)



**NBP2-34265-0.1mg**

Cytokeratin 8 Antibody (H1)

Product Information	
Unit Size	0.1 mg
Concentration	0.2 mg/ml
Storage	Store at 4C.
Clonality	Monoclonal
Clone	H1
Preservative	0.05% Sodium Azide
Isotype	IgG1 Kappa
Purity	Protein A or G purified
Buffer	10 mM PBS with 0.05% BSA
Target Molecular Weight	52.5 kDa

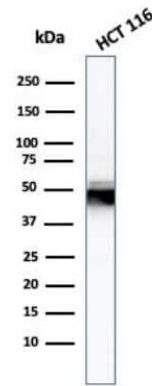
Product Description	
Description	<p>200ug/ml of antibody purified from Bioreactor Concentrate by Protein A or G. Prepared in 10 mM PBS with 0.05% BSA &amp; 0.05% azide. Also available WITHOUT BSA &amp; azide at 1.0 mg/ml. (NBP2-34626)</p> <p>Antibody with azide - store at 2 to 8C. Antibody without azide - store at -20 to -80C.</p>
Host	Mouse
Gene ID	3856
Gene Symbol	KRT8
Species	Human, Rat, Zebrafish
Specificity/Sensitivity	<p>Cytokeratin 8 (CK8) belongs to the type II (or B or basic) subfamily of high molecular weight cytokeratins and exists in combination with cytokeratin 18 (CK18). CK8 is primarily found in the non-squamous epithelia and is present in majority of adenocarcinomas and ductal carcinomas. It is absent in squamous cell carcinomas. Hepatocellular carcinomas are defined by the use of antibodies that recognize only cytokeratin 8 and 18. CK8 exists on several types of normal and neoplastic epithelia, including many ductal and glandular epithelia such as colon, stomach, small intestine, trachea, and esophagus as well as in transitional epithelium. Anti-CK8 does not react with skeletal muscle or nerve cells. Epithelioid sarcoma, chordoma, and adamantinoma show strong positivity corresponding to that of simple epithelia (with antibodies against CK8, CK18 and CK19). Reportedly, anti-CK8 is useful for the differentiation of lobular () carcinoma of the breast.</p>
Immunogen	Cytoskeleton preparation containing cytokeratin 8 (Uniprot: P05787)

Product Application Details	
Applications	Western Blot, Simple Western, Flow Cytometry, Immunocytochemistry/ Immunofluorescence, Immunohistochemistry, Immunohistochemistry-Paraffin
Recommended Dilutions	Western Blot 1-2 ug/ml, Simple Western 10 ug/ml, Flow Cytometry 1-2 ug/million cells, Immunohistochemistry, Immunocytochemistry/ Immunofluorescence 1-2 ug/ml, Immunohistochemistry-Paraffin 1-2 ug/ml
Application Notes	Immunohistochemistry (Formalin-fixed): 1-2ug/ml for 30 min at RT. Staining of formalin-fixed tissues requires heating tissue sections in 10mM Tris with 1mM EDTA, pH 9.0, for 45 min at 95C followed by cooling at RT for 20 minutes. Optimal dilution for a specific application should be determined.

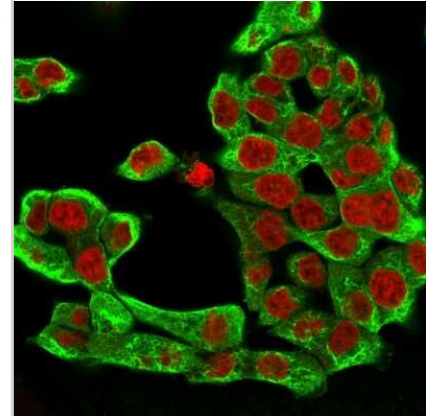


## Images

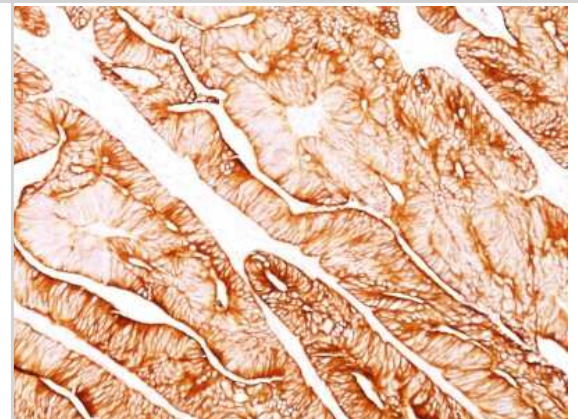
Western Blot: Cytokeratin 8 Antibody (H1) [NBP2-34265] - Western Blot Analysis of HCT116 cell lysate using Cytokeratin 8 antibody (H1).



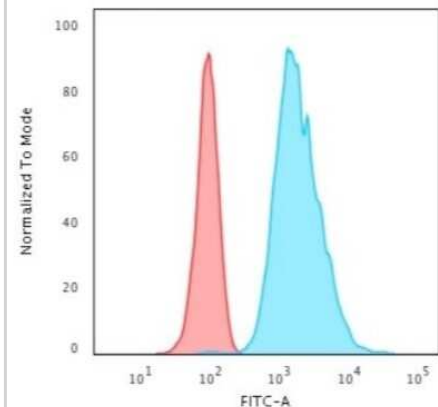
Immunocytochemistry/Immunofluorescence: Cytokeratin 8 Antibody (H1) [NBP2-34265] - Immunofluorescence Analysis of HCT116 cells labeling CK8 with Cytokeratin 8 Mouse Monoclonal Antibody (H1) followed by Goat anti-mouse IgG-CF488 (Green). The nuclear counterstain is Reddot (Red).



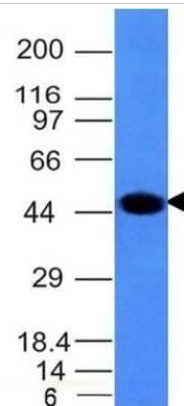
Immunohistochemistry-Paraffin: Cytokeratin 8 Antibody (H1) [NBP2-34265] - Formalin-fixed, paraffin-embedded human colon carcinoma stained with Cytokeratin 8 MAb (H1).



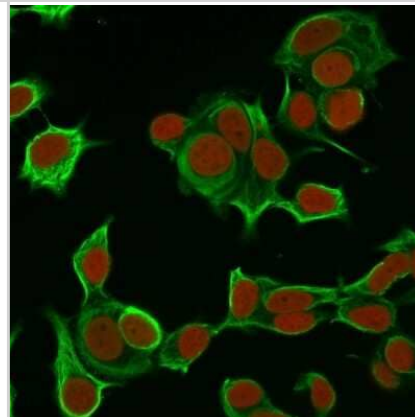
Flow Cytometry: Cytokeratin 8 Antibody (H1) [NBP2-34265] - Flow Cytometric Analysis of HeLa cells using Cytokeratin 8 Antibody (H1) followed by Goat anti-Mouse IgG-CF488 (Blue); Isotype Control (Red).



Western Blot: Cytokeratin 8 Antibody (H1) [NBP2-34265] - Western Blot Analysis of A431 cell lysate using Cytokeratin 8 Mouse Monoclonal Antibody (H1).



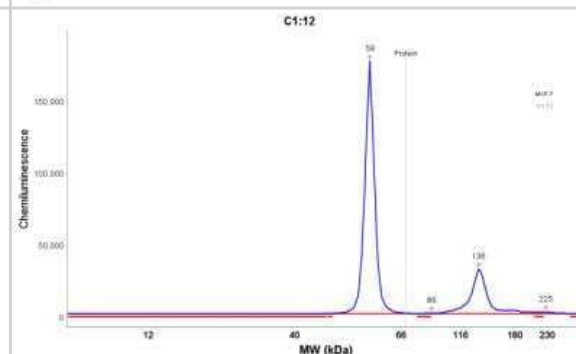
Immunocytochemistry/Immunofluorescence: Cytokeratin 8 Antibody (H1) [NBP2-34265] - Immunofluorescence Analysis of MCF-7 cells labeling CK8 with Cytokeratin 8 Antibody (H1) followed by Goat anti-Mouse IgG-CF488 (Green). The nuclear counterstain is Red Dot.(Red).



Simple Western: Cytokeratin 8 Antibody (H1) [NBP2-34265] - Simple Western lane view shows a specific band for Cytokeratin 8 in 0.2 mg/ml of MCF-7 lysate(s). This experiment was performed under reducing conditions using the 12-230 kDa separation system.



Simple Western: Cytokeratin 8 Antibody (H1) [NBP2-34265] - Electropherogram image of the corresponding Simple Western lane. Cytokeratin 8 antibody was used at 10 ug/ml dilution of MCF-7 lysates(s) respectively.





### **Novus Biologicals USA**

10730 E. Briarwood Avenue  
Centennial, CO 80112  
USA  
Phone: 303.730.1950  
Toll Free: 1.888.506.6887  
Fax: 303.730.1966  
nb-customerservice@bio-techne.com

### **Bio-Techne Canada**

21 Canmotor Ave  
Toronto, ON M8Z 4E6  
Canada  
Phone: 905.827.6400  
Toll Free: 855.668.8722  
Fax: 905.827.6402  
canada.inquires@bio-techne.com

### **Bio-Techne Ltd**

19 Barton Lane  
Abingdon Science Park  
Abingdon, OX14 3NB, United Kingdom  
Phone: (44) (0) 1235 529449  
Free Phone: 0800 37 34 15  
Fax: (44) (0) 1235 533420  
info.EMEA@bio-techne.com

### **General Contact Information**

[www.novusbio.com](http://www.novusbio.com)  
Technical Support: nb-technical@bio-techne.com  
Orders: nb-customerservice@bio-techne.com  
General: novus@novusbio.com

### **Products Related to NBP2-34265-0.1mg**

HAF007	Goat anti-Mouse IgG Secondary Antibody [HRP]
NB720-B	Rabbit anti-Mouse IgG (H+L) Secondary Antibody [Biotin]
NBP1-43319-0.5mg	Mouse IgG1 Kappa Isotype Control (P3.6.2.8.1)
NBP2-23166	Recombinant Human Cytokeratin 8 His Protein

### **Limitations**

This product is for research use only and is not approved for use in humans or in clinical diagnosis. Primary Antibodies are guaranteed for 1 year from date of receipt.

For more information on our 100% guarantee, please visit [www.novusbio.com/guarantee](http://www.novusbio.com/guarantee)

Earn gift cards/discounts by submitting a review: [www.novusbio.com/reviews/submit/NBP2-34265](http://www.novusbio.com/reviews/submit/NBP2-34265)

Earn gift cards/discounts by submitting a publication using this product:  
[www.novusbio.com/publications](http://www.novusbio.com/publications)

