

Product Datasheet

Cytochrome P450 2A6 Antibody NBP2-33485-25ul

Unit Size: 25 ul

Store at 4C short term. Aliquot and store at -20C long term. Avoid freeze-thaw cycles.

www.novusbio.com



technical@novusbio.com

Protocols, Publications, Related Products, Reviews, Research Tools and Images at:
www.novusbio.com/NBP2-33485

Updated 6/13/2024 v.20.1

Earn rewards for product
reviews and publications.

Submit a publication at www.novusbio.com/publications

Submit a review at www.novusbio.com/reviews/destination/NBP2-33485



NBP2-33485-25ul**Cytochrome P450 2A6 Antibody**

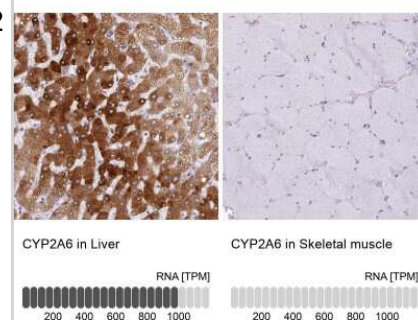
Product Information	
Unit Size	25 ul
Concentration	Concentrations vary lot to lot. See vial label for concentration. If unlisted please contact technical services.
Storage	Store at 4C short term. Aliquot and store at -20C long term. Avoid freeze-thaw cycles.
Clonality	Polyclonal
Preservative	0.02% Sodium Azide
Isotype	IgG
Purity	Immunogen affinity purified
Buffer	PBS (pH 7.2) and 40% Glycerol

Product Description	
Host	Rabbit
Gene ID	1548
Gene Symbol	CYP2A6
Species	Human
Immunogen	This antibody was developed against a recombinant protein corresponding to amino acids: QEEAGFLIDALRGTGGANIDPTFFLSR

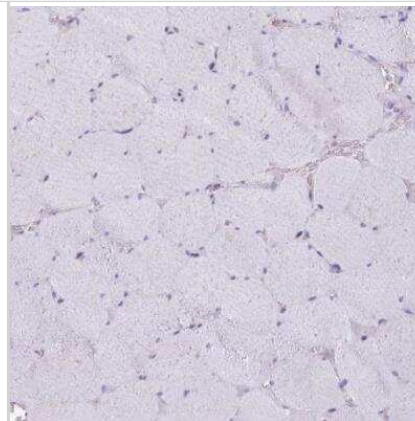
Product Application Details	
Applications	Simple Western, Immunohistochemistry, Immunohistochemistry-Paraffin
Recommended Dilutions	Simple Western 1:25, Immunohistochemistry 1:200 - 1:500, Immunohistochemistry-Paraffin 1:200 - 1:500
Application Notes	For IHC-Paraffin, HIER pH 6 retrieval is recommended. Cytochrome P450 2A6 antibody validated for Simple Western from an internal validation.

Images

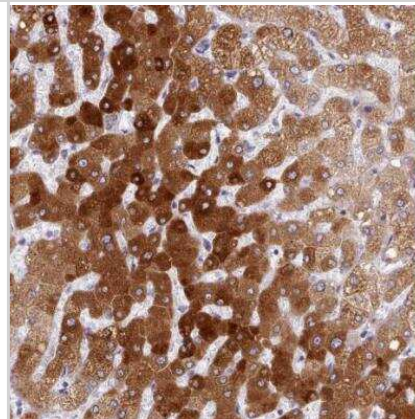
Immunohistochemistry-Paraffin: Cytochrome P450 2A6 Antibody [NBP2-33485] - Analysis in human liver and skeletal muscle tissues using NBP2-33485 antibody. Corresponding Cytochrome P450 2A6 RNA-seq data are presented for the same tissues.



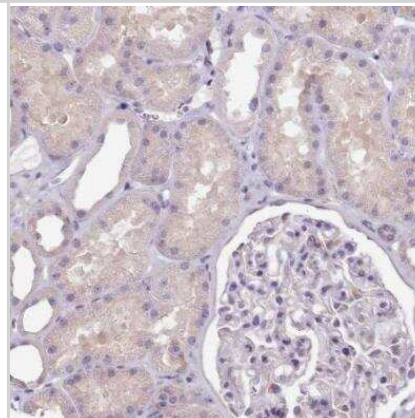
Immunohistochemistry-Paraffin: Cytochrome P450 2A6 Antibody [NBP2-33485] - Staining of human skeletal muscle shows no positivity in myocytes as expected.



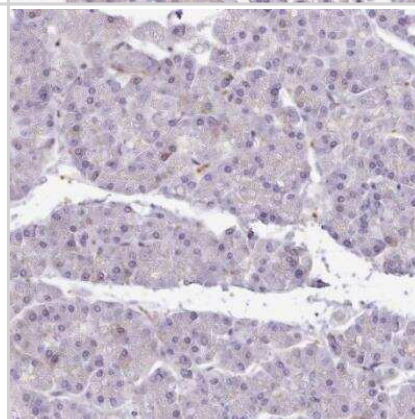
Immunohistochemistry-Paraffin: Cytochrome P450 2A6 Antibody [NBP2-33485] - Staining of human liver shows strong cytoplasmic positivity in hepatocytes.



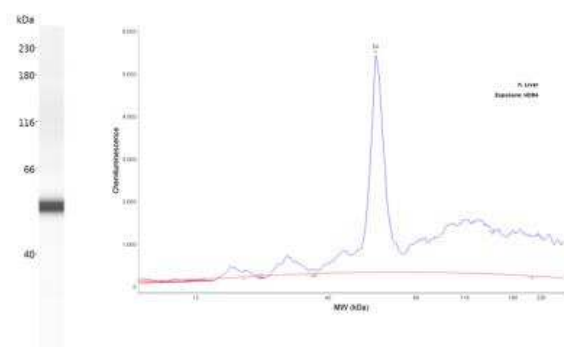
Immunohistochemistry-Paraffin: Cytochrome P450 2A6 Antibody [NBP2-33485] - Staining of human kidney shows very weak cytoplasmic positivity in cells in tubules as expected.



Immunohistochemistry-Paraffin: Cytochrome P450 2A6 Antibody [NBP2-33485] - Staining of human pancreas shows no positivity in exocrine glandular cells as expected.



Simple Western: Cytochrome P450 2A6 Antibody [NBP2-33485] - Lane view shows a specific band for Cytochrome P450 2A6 in Liver lysate using 20 ug/mL. Electropherogram image of corresponding Simple Western lane view at WES molecular weight of 54 kDa. Image from an internal validation.





Novus Biologicals USA

10730 E. Briarwood Avenue
Centennial, CO 80112
USA
Phone: 303.730.1950
Toll Free: 1.888.506.6887
Fax: 303.730.1966
nb-customerservice@bio-techne.com

Bio-Techne Canada

21 Canmotor Ave
Toronto, ON M8Z 4E6
Canada
Phone: 905.827.6400
Toll Free: 855.668.8722
Fax: 905.827.6402
canada.inquires@bio-techne.com

Bio-Techne Ltd

19 Barton Lane
Abingdon Science Park
Abingdon, OX14 3NB, United Kingdom
Phone: (44) (0) 1235 529449
Free Phone: 0800 37 34 15
Fax: (44) (0) 1235 533420
info.EMEA@bio-techne.com

General Contact Information

www.novusbio.com
Technical Support: nb-technical@bio-techne.com
Orders: nb-customerservice@bio-techne.com
General: novus@novusbio.com

Limitations

This product is for research use only and is not approved for use in humans or in clinical diagnosis. Primary Antibodies are guaranteed for 1 year from date of receipt.

For more information on our 100% guarantee, please visit www.novusbio.com/guarantee

Earn gift cards/discounts by submitting a review: www.novusbio.com/reviews/submit/NBP2-33485

Earn gift cards/discounts by submitting a publication using this product:
www.novusbio.com/publications

