

Product Datasheet

Cyclin D1 Antibody (SPM587)

NBP2-32840-0.1mg

Unit Size: 0.1 mg

Store at 4C.

www.novusbio.com



technical@novusbio.com

Reviews: 1 Publications: 9

Protocols, Publications, Related Products, Reviews, Research Tools and Images at:
www.novusbio.com/NBP2-32840

Updated 7/16/2024 v.20.1

Earn rewards for product
reviews and publications.

Submit a publication at www.novusbio.com/publications

Submit a review at www.novusbio.com/reviews/destination/NBP2-32840



NBP2-32840-0.1mg

Cyclin D1 Antibody (SPM587)

| Product Information | |
|-------------------------|--------------------------|
| Unit Size | 0.1 mg |
| Concentration | 0.2 mg/ml |
| Storage | Store at 4C. |
| Clonality | Monoclonal |
| Clone | SPM587 |
| Preservative | 0.05% Sodium Azide |
| Isotype | IgG2a Kappa |
| Purity | Protein A or G purified |
| Buffer | 10 mM PBS with 0.05% BSA |
| Target Molecular Weight | 36 kDa |

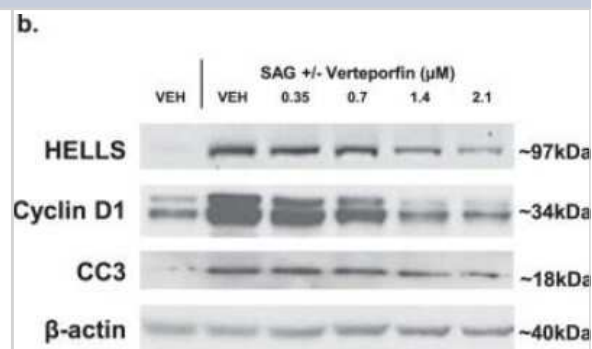
| Product Description | |
|-------------------------|--|
| Description | 200ug/ml of antibody purified from Bioreactor Concentrate by Protein A or G. Prepared in 10 mM PBS with 0.05% BSA & 0.05% azide. Also available WITHOUT BSA & azide at 1.0 mg/ml. (NBP2-34816) Antibody with azide - store at 2 to 8C. Antibody without azide - store at -20 to -80C. |
| Host | Mouse |
| Gene ID | 595 |
| Gene Symbol | CCND1 |
| Species | Human, Mouse, Rat, Monkey |
| Marker | G1-Cyclin & Mantle Cell Marker |
| Specificity/Sensitivity | Recognizes a protein of 36kDa, identified as cyclin D1. Cyclin D1, one of the key cell cycle regulators, is a putative proto-oncogene overexpressed in a wide variety of human neoplasms. This antibody neutralizes the activity of cyclin D1 in vivo. About 60% of mantle cell lymphomas (MCL) contain a t(11; 14)(q13; q32) translocation resulting in over-expression of cyclin D1. This antibody is useful in identifying mantle cell lymphomas (cyclin D1 positive) from CLL/SLL and follicular lymphomas (cyclin D1 negative). Occasionally, hairy cell leukemia and plasma cell myeloma weakly express Cyclin D1. |
| Immunogen | Human recombinant full length cyclin D1 protein (Uniprot: P24385) |

| Product Application Details | |
|-----------------------------|--|
| Applications | Western Blot, Flow Cytometry, Immunocytochemistry/ Immunofluorescence, Immunohistochemistry, Immunohistochemistry-Paraffin |
| Recommended Dilutions | Western Blot 1-2 ug/ml, Flow Cytometry 1-2 ug/million cells, Immunohistochemistry, Immunocytochemistry/ Immunofluorescence 1-2 ug/ml, Immunohistochemistry-Paraffin 1-2 ug/ml |
| Application Notes | Immunohistochemistry (Formalin-fixed): 1-2ug/ml for 30 minutes at RT. Staining of formalin-fixed tissues requires heating tissue sections in 10mM Tris with 1mM EDTA, pH 9.0, for 45 min at 95C followed by cooling at RT for 20 minutes. Optimal dilution for a specific application should be determined. WB reported in a verified customer review. |

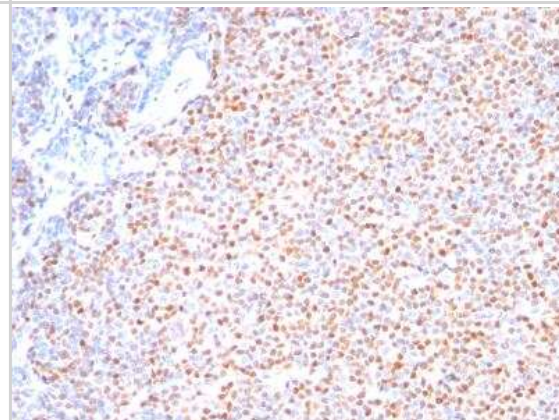


Images

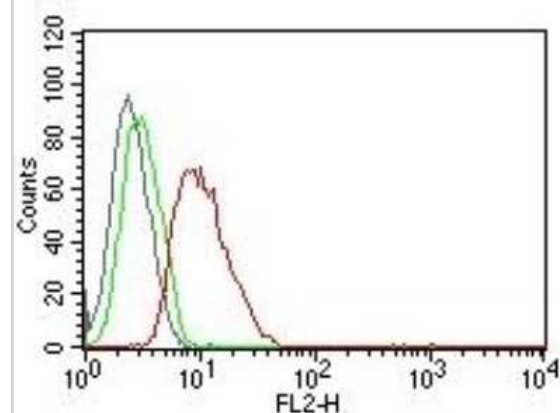
Western Blot: Cyclin D1 Antibody (SPM587) [NBP2-32840] - HELLS expression and protein levels are modulated with YAP1/TEAD inhibition downstream of SHH signaling. Western blot showing protein levels of HELLS, cleaved caspase 3 (CC3), and Cyclin D1 in verteporfin treated CGNPs. Blot is representative of three replicates. Full-length blots are presented in Supplementary Fig. S4. Image collected and cropped by CiteAb from the following publication (<https://www.nature.com/articles/s41598-019-50088-1>), licensed under a CC-BY license.



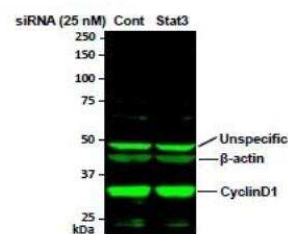
Immunohistochemistry-Paraffin: Cyclin D1 Antibody (SPM587) [NBP2-32840] - Formalin-paraffin human Mantle Cell Lymphoma stained with Cyclin D1 Ab (Clone SPM587).



Flow Cytometry: Cyclin D1 Antibody (SPM587) [NBP2-32840] - Flow Cytometric analysis of human Cyclin D1 on MCF-7 cells. Black: cells alone; Green: Isotype Control; Red: PE-labeled Cyclin D1 Monoclonal Antibody (SPM587).

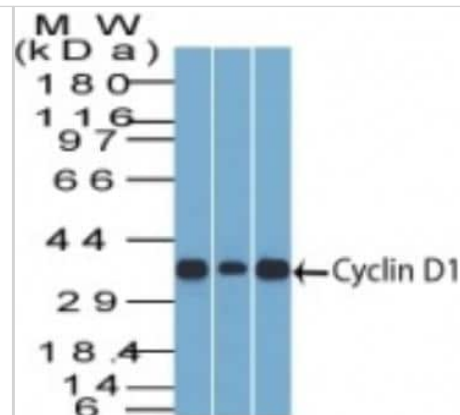


Western Blot: Cyclin D1 Antibody (SPM587) [NBP2-32840] - analysis of Cyclin D1 in human breast cancer cell line MDA-MB-231 cell lysate using anti-Cyclin D1. Image from verified customer review.

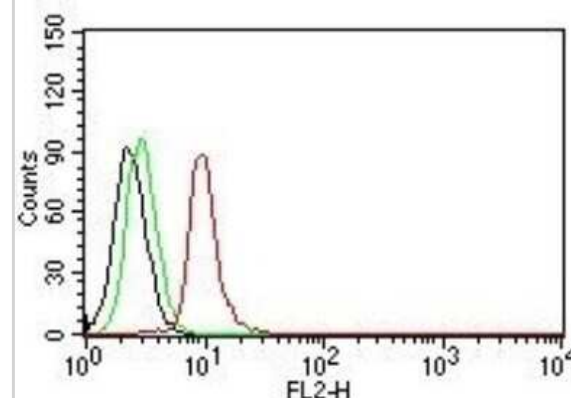


50 μg of whole cell lysate of human breast cancer cell line MDA-MB-231 was used, and the NC membrane was blotted with primary antibodies against Cyclin D1 (mouse, NBP2-32840) and β-actin (mouse, Santa Cruz Biotech) and Li-Cor anti-mouse secondary antibody in TBS-T buffer.

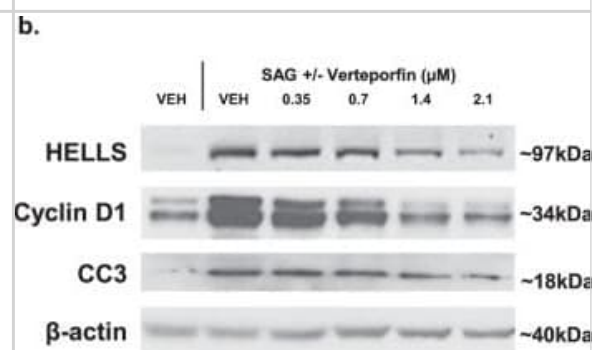
Western Blot: Cyclin D1 Antibody (SPM587) [NBP2-32840] - Western Blot of cyclin D1 in (1) C2C12 (2) HepG2 & (3) NIH3T3 Lysate with Cyclin D1 Ab (SPM587)



Flow Cytometry: Cyclin D1 Antibody (SPM587) [NBP2-32840] - Flow Cytometric analysis of human Cyclin D1 on Jurkat cells. Black: cells alone; Green: Isotype Control; Red: PE-labeled Cyclin D1 Monoclonal Antibody (SPM587).



HELLS expression and protein levels are modulated with YAP1/TEAD inhibition downstream of SHH signaling. (b) Western blot showing protein levels of HELLs, cleaved caspase 3 (CC3), and Cyclin D1 in verteporfin treated CGNPs. Blot is representative of three replicates. Full-length blots are presented in Supplementary Fig. S4. Image collected and cropped by CiteAb from the following publication (<https://pubmed.ncbi.nlm.nih.gov/31541170>), licensed under a CC-BY licence.



Publications

Shaalaa AK, Teshima THN, Tucker AS, Proctor GB. Inhibition of Aurora Kinase B activity disrupts development and differentiation of salivary glands *Cell Death Discovery* 2021-01-18 [PMID: 33462217] (IHC)

Cai Z, Wang J, Li Y et al. Overexpressed Cyclin D1 and CDK4 proteins are responsible for the resistance to CDK4/6 inhibitor in breast cancer that can be reversed by PI3K/mTOR inhibitors *Science China. Life sciences* 2022-08-11 [PMID: 35982377]

Ding Z, Qiu M, Alharbi M et al FOXO1 expression in chondrocytes modulates cartilage production and removal in fracture healing *Bone* 2021-03-04 [PMID: 33662610] (FLOW, Mouse)

Details:

Citation using the Alexa Fluor 488 version of this antibody.

Gul HF, Ilhan N, Ilhan N et al. The Combined Effect of Pomegranate Extract and Tangeretin on the DMBA-induced Breast Cancer Model *The Journal of nutritional biochemistry* 2020-12-13 [PMID: 33326843] (WB, Rat)

Shi Q, Li Y, Li S et al. LncRNA DILA1 inhibits Cyclin D1 degradation and contributes to tamoxifen resistance in breast cancer *Nat Commun* 2020-11-02 [PMID: 33139730] (IHC-P, Human)

Xu W, Chen S, Wang X et al. Methylprednisolone potentiates tetrandrine pharmacodynamics against human T lymphoblastoid leukemia MOLT-4 cells via regulation of NF-kappa B activation and cell cycle transition *Steroids* 2020-08-17 [PMID: 32818521]

Xu W, Wu H, Chen S et al. Cytotoxic effects of vitamins K1, K2 and K3 against human T lymphoblastoid leukemia cells through apoptosis induction and cell cycle arrest *Chem Biol Drug Des* 2020-04-18 [PMID: 32305047] (Human)

Robinson MH, Maximov V, Lallani S et al. Upregulation of the chromatin remodeler HELLS is mediated by YAP1 in Sonic Hedgehog Medulloblastoma *Sci Rep* 2019-09-20 [PMID: 31541170] (WB, Mouse)

Chelsky ZL, Yue P, Kondratyuk TP et al. A Resveratrol Analogue Promotes ERKMAPK-Dependent Stat3 Serine and Tyrosine Phosphorylation Alterations and Antitumor Effects In Vitro against Human Tumor Cells *Mol. Pharmacol.* 2015-09-01 [PMID: 26138072] (Human)





Novus Biologicals USA

10730 E. Briarwood Avenue
Centennial, CO 80112
USA
Phone: 303.730.1950
Toll Free: 1.888.506.6887
Fax: 303.730.1966
nb-customerservice@bio-techne.com

Bio-Techne Canada

21 Canmotor Ave
Toronto, ON M8Z 4E6
Canada
Phone: 905.827.6400
Toll Free: 855.668.8722
Fax: 905.827.6402
canada.inquires@bio-techne.com

Bio-Techne Ltd

19 Barton Lane
Abingdon Science Park
Abingdon, OX14 3NB, United Kingdom
Phone: (44) (0) 1235 529449
Free Phone: 0800 37 34 15
Fax: (44) (0) 1235 533420
info.EMEA@bio-techne.com

General Contact Information

www.novusbio.com
Technical Support: nb-technical@bio-techne.com
Orders: nb-customerservice@bio-techne.com
General: novus@novusbio.com

Products Related to NBP2-32840-0.1mg

| | |
|------------------|---|
| HAF007 | Goat anti-Mouse IgG Secondary Antibody [HRP] |
| NB720-B | Rabbit anti-Mouse IgG (H+L) Secondary Antibody [Biotin] |
| NBP1-96981-0.5mg | Mouse IgG2a Kappa Isotype Control (M2AK) |
| NBP2-34816AF488 | Cyclin D1 Antibody (SPM587) [Alexa Fluor® 488] |

Limitations

This product is for research use only and is not approved for use in humans or in clinical diagnosis. Primary Antibodies are guaranteed for 1 year from date of receipt.

For more information on our 100% guarantee, please visit www.novusbio.com/guarantee

Earn gift cards/discounts by submitting a review: www.novusbio.com/reviews/submit/NBP2-32840

Earn gift cards/discounts by submitting a publication using this product:
www.novusbio.com/publications

