

# Product Datasheet

## Glucose 6 Phosphate Dehydrogenase Antibody (2H7) [PE] NBP2-22125PE

Unit Size: 0.1 ml

Store at 4C in the dark.

[www.novusbio.com](http://www.novusbio.com)



[technical@novusbio.com](mailto:technical@novusbio.com)

Protocols, Publications, Related Products, Reviews, Research Tools and Images at:  
[www.novusbio.com/NBP2-22125PE](http://www.novusbio.com/NBP2-22125PE)

Updated 7/11/2023 v.20.1

Earn rewards for product  
reviews and publications.

Submit a publication at [www.novusbio.com/publications](http://www.novusbio.com/publications)

Submit a review at [www.novusbio.com/reviews/destination/NBP2-22125PE](http://www.novusbio.com/reviews/destination/NBP2-22125PE)



**NBP2-22125PE****Glucose 6 Phosphate Dehydrogenase Antibody (2H7) [PE]**

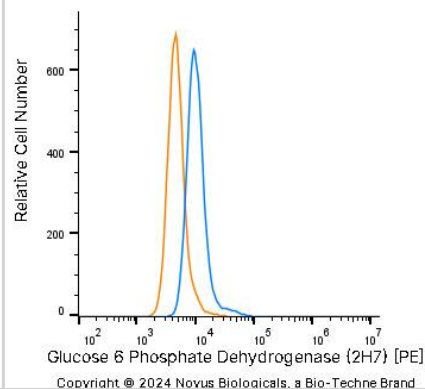
Product Information	
Unit Size	0.1 ml
Concentration	Please see the vial label for concentration. If unlisted please contact technical services.
Storage	Store at 4C in the dark.
Clonality	Monoclonal
Clone	2H7
Preservative	0.05% Sodium Azide
Isotype	IgG1
Conjugate	PE
Purity	Ammonium sulfate precipitation
Buffer	PBS

Product Description	
Host	Mouse
Gene ID	2539
Gene Symbol	G6PD
Species	Human
Marker	Cytosol Marker
Immunogen	Purified recombinant fragment of human Glucose 6 Phosphate Dehydrogenase expressed in E. coli. [Uniprot: P11413]

Product Application Details	
Applications	Western Blot, ELISA, Flow Cytometry, Immunohistochemistry, Immunohistochemistry-Paraffin
Recommended Dilutions	Western Blot, Flow Cytometry, ELISA, Immunohistochemistry, Immunohistochemistry-Paraffin
Application Notes	Optimal dilution of this antibody should be experimentally determined.

**Images**

A431 human skin carcinoma cell line was stained with Mouse anti-Glucose 6 Phosphate Dehydrogenase Protein-G purified Monoclonal Antibody conjugated to Phycoerythrin (Catalog # NBP2-22125PE, blue histogram) or matched control antibody (Catalog # NBP2-27231PE, orange histogram).





### **Novus Biologicals USA**

10730 E. Briarwood Avenue  
Centennial, CO 80112  
USA  
Phone: 303.730.1950  
Toll Free: 1.888.506.6887  
Fax: 303.730.1966  
nb-customerservice@bio-techne.com

### **Bio-Techne Canada**

21 Canmotor Ave  
Toronto, ON M8Z 4E6  
Canada  
Phone: 905.827.6400  
Toll Free: 855.668.8722  
Fax: 905.827.6402  
canada.inquires@bio-techne.com

### **Bio-Techne Ltd**

19 Barton Lane  
Abingdon Science Park  
Abingdon, OX14 3NB, United Kingdom  
Phone: (44) (0) 1235 529449  
Free Phone: 0800 37 34 15  
Fax: (44) (0) 1235 533420  
info.EMEA@bio-techne.com

### **General Contact Information**

www.novusbio.com  
Technical Support: nb-technical@bio-  
techne.com  
Orders: nb-customerservice@bio-techne.com  
General: novus@novusbio.com

### **Products Related to NBP2-22125PE**

---

NBP1-97005PE	Mouse IgG1 Isotype Control (MG1) [PE]
NBC1-19064	Recombinant E. coli Glucose 6 Phosphate Dehydrogenase Protein
10096-DH-050	Glucose 6 Phosphate Dehydrogenase [Unconjugated]
NB300-221	GAPDH Antibody (1D4)

---

### **Limitations**

This product is for research use only and is not approved for use in humans or in clinical diagnosis. Primary Antibodies are guaranteed for 1 year from date of receipt.

For more information on our 100% guarantee, please visit [www.novusbio.com/guarantee](http://www.novusbio.com/guarantee)

Earn gift cards/discounts by submitting a review: [www.novusbio.com/reviews/submit/NBP2-22125PE](http://www.novusbio.com/reviews/submit/NBP2-22125PE)

Earn gift cards/discounts by submitting a publication using this product:  
[www.novusbio.com/publications](http://www.novusbio.com/publications)

