

# Product Datasheet

## Albumin Native Protein NBP1-97049-5mg

Unit Size: 5 mg

Store at 4C.

[www.novusbio.com](http://www.novusbio.com)



[technical@novusbio.com](mailto:technical@novusbio.com)

Protocols, Publications, Related Products, Reviews, Research Tools and Images at:  
[www.novusbio.com/NBP1-97049](http://www.novusbio.com/NBP1-97049)

Updated 7/23/2023 v.20.1

Earn rewards for product  
reviews and publications.

Submit a publication at [www.novusbio.com/publications](http://www.novusbio.com/publications)

Submit a review at [www.novusbio.com/reviews/destination/NBP1-97049](http://www.novusbio.com/reviews/destination/NBP1-97049)



**NBP1-97049-5mg**

Albumin Native Protein

Product Information	
Unit Size	5 mg
Concentration	Lyoph
Storage	Store at 4C.
Preservative	0.01% Sodium Azide
Reconstitution Instructions	Reconstitute with 500 ul of deionized water.
Purity	Multi-step
Buffer	Lyophilized from 0.02 M Potassium Phosphate, 0.15 M Sodium Chloride, pH 7.2

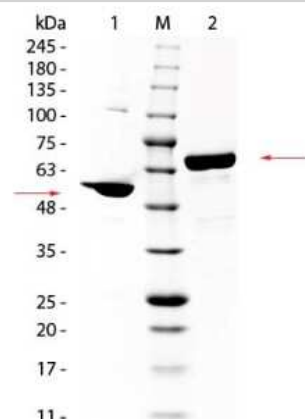
Product Description	
Description	<p>Native Human Albumin</p> <p>Source: Normal serum (Accession #:P02768)</p> <p>Store vial at 4C prior to restoration. For extended storage aliquot contents and freeze at -20C or below. Avoid cycles of freezing and thawing. Centrifuge product if not completely clear after standing at room temperature. This product is stable for several weeks at 4C as an undiluted liquid. Dilute only prior to immediate use.</p> <p>No test method can provide total assurance that the hepatitis B virus, hepatitis C virus, human immunodeficiency virus, or any other infectious agents are absent. Thus, all blood products, including purified proteins derived from human blood sources, should be handled at Biosafety Level 2 as recommended by the CDC \NIH manual entitled Biosafety in Microbiological and Biomedical Laboratories for potentially infectious human serum, blood specimens or proteins derived from same. Source material for the human blood product supplied to your facility has been tested for the detection of HIV antibody, Hepatitis B surface antigen, antibody to Hepatitis C, HIV 1 antigen(s), antibody to HTLV - I/II, and syphilis by FDA guidelines. All units were found to be non-reactive/negative for these tests. All human blood source material is collected in FDA licensed centers and is tested with FDA approved test kits.</p>
Gene ID	213
Gene Symbol	ALB
Species	Human
Preparation Method	This product was prepared from normal serum by a multi-step process which includes delipidation and selective precipitation followed by extensive dialysis against the buffer stated above. Assay by immunoelectrophoresis resulted in a single precipitin arc against anti-Human Albumin and anti-Human Serum.

Product Application Details	
Applications	Dot Blot, SDS-Page
Recommended Dilutions	Dot Blot, SDS-Page
Application Notes	This product has been tested in SDS-Page and can be used in SDS, Western Blotting, ELISA experiments and other immunological assays.

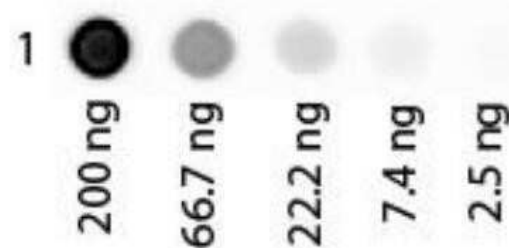


## Images

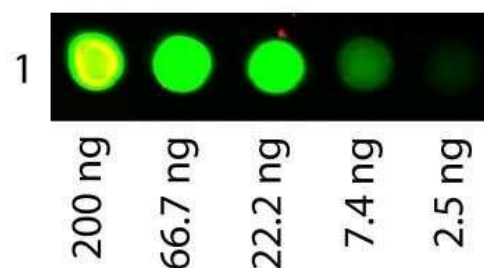
SDS-Page: Albumin Native Protein [NBP1-97049] - SDS PAGE of Human Albumin. Lane 1: Non-Reduced Human Albumin. Lane 2: 5 uL Opal Prestained Marker. Lane 3: Reduced Human Albumin. Load: 1 ug per lane. Predicted/Observed size: Non-Reduced at 63 kDa/Observed at 55 kDa; Reduced at 63 kDa. Non-reduced migrates farther on gel due to native albumin's capacity to bind ions, increasing its charge and, therefore, ability to migrate farther down gel.



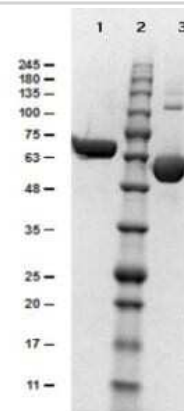
Dot Blot: Albumin Native Protein [NBP1-97049] - Human Albumin Rhodamine Conjugated. Antigen: Rhodamine Conjugated Human Albumin. Load: 3-fold serial dilution starting at 200 ng. Primary antibody: None. Secondary antibody: None. Block for 1 HR at RT.. Using the Rhodamine format of this antibody.



Dot Blot: Albumin Native Protein [NBP1-97049] - Human Albumin Rhodamine Conjugated. Antigen: Rhodamine Conjugated Human Albumin. Load: 3-fold serial dilution starting at 200 ng. Primary antibody: None. Secondary antibody: None. Block for 1 HR at RT.. Using the Rhodamine format of this antibody.



SDS-Page: Albumin Native Protein [NBP1-97049] - SDS-PAGE results of Human Albumin. Lane 1: reduced human albumin. Lane 2: opal prestained molecular weight ladder. Lane 3: non-reduced human albumin. Load: 1ug. 4-20% Lonza SDS-PAGE; Coomassie Stained; ChemiDoc Imaged.





### **Novus Biologicals USA**

10730 E. Briarwood Avenue  
Centennial, CO 80112  
USA  
Phone: 303.730.1950  
Toll Free: 1.888.506.6887  
Fax: 303.730.1966  
nb-customerservice@bio-techne.com

### **Bio-Techne Canada**

21 Canmotor Ave  
Toronto, ON M8Z 4E6  
Canada  
Phone: 905.827.6400  
Toll Free: 855.668.8722  
Fax: 905.827.6402  
canada.inquires@bio-techne.com

### **Bio-Techne Ltd**

19 Barton Lane  
Abingdon Science Park  
Abingdon, OX14 3NB, United Kingdom  
Phone: (44) (0) 1235 529449  
Free Phone: 0800 37 34 15  
Fax: (44) (0) 1235 533420  
info.EMEA@bio-techne.com

### **General Contact Information**

www.novusbio.com  
Technical Support: nb-technical@bio-techne.com  
Orders: nb-customerservice@bio-techne.com  
General: novus@novusbio.com

### **Products Related to NBP1-97049-5mg**

---

NBP1-96881	Albumin Native Protein
210-TA-005	TNF-alpha [Unconjugated]
MAB1455	Albumin Antibody (188835) [Unconjugated] - Serum
7954-GM-010/CF	GM-CSF [Unconjugated]

---

### **Limitations**

This product is for research use only and is not approved for use in humans or in clinical diagnosis. Peptides and proteins are guaranteed for 3 months from date of receipt.

For more information on our 100% guarantee, please visit [www.novusbio.com/guarantee](http://www.novusbio.com/guarantee)

Earn gift cards/discounts by submitting a review: [www.novusbio.com/reviews/submit/NBP1-97049](http://www.novusbio.com/reviews/submit/NBP1-97049)

Earn gift cards/discounts by submitting a publication using this product:  
[www.novusbio.com/publications](http://www.novusbio.com/publications)

