

Product Datasheet

Goat IgG Fc Isotype Control

NBP1-97042-1mg

Unit Size: 1 mg

Store at 4C short term. For extended storage, add an equal volume of glycerol, aliquot and store at -20C or below. Avoid repeated freeze-thaw cycles.

www.novusbio.com



technical@novusbio.com

Protocols, Publications, Related Products, Reviews, Research Tools and Images at:
www.novusbio.com/NBP1-97042

Updated 6/28/2021 v.20.1

Earn rewards for product
reviews and publications.

Submit a publication at www.novusbio.com/publications

Submit a review at www.novusbio.com/reviews/destination/NBP1-97042



NBP1-97042-1mg

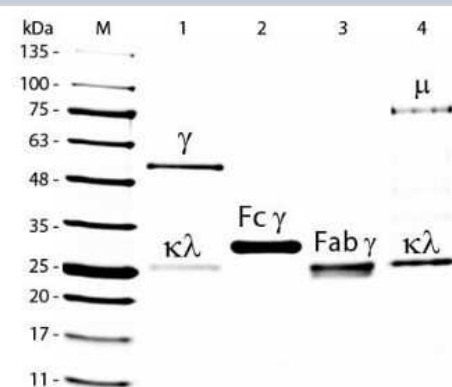
Goat IgG Fc Isotype Control

Product Information	
Unit Size	1 mg
Concentration	1.1 mg/ml
Storage	Store at 4C short term. For extended storage, add an equal volume of glycerol, aliquot and store at -20C or below. Avoid repeated freeze-thaw cycles.
Preservative	0.01% Sodium Azide
Isotype	IgG
Purity	Ion exchange chromatography
Buffer	0.02 M Potassium Phosphate, 0.15 M Sodium Chloride, pH 7.2
Product Description	
Description	Native Goat IgG, Fc. Source: <i>Serum</i>
Host	Goat
Species	Goat
Specificity/Sensitivity	Assay by immunoelectrophoresis resulted in a single precipitin arc against anti-Goat Serum, anti-Goat IgG and anti-Goat IgG F(c). No reaction was observed against anti-Goat IgG F(ab)2 or anti-Papain.
Product Application Details	
Applications	Western Blot, Dot Blot, ELISA, Immunoprecipitation, SDS-Page
Recommended Dilutions	Western Blot, ELISA, Immunoprecipitation, Dot Blot, SDS-Page

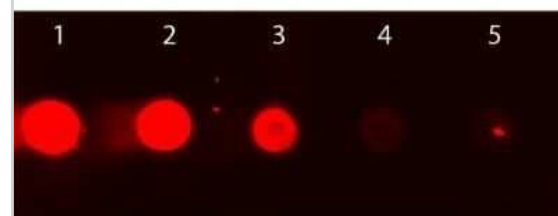


Images

SDS-Page: Goat IgG Fc Isotype Control [NBP1-97042] - SDS-PAGE of Goat IgG F(c) Fragment. Lane M: 5 uL Opal Prestained Marker. Lane 1: Reduced Goat IgG Whole Molecule. Lane 2: Reduced Goat IgG F(c) Fragment. Lane 3: Reduced Goat IgG F(ab) Fragment. Lane 4: Reduced Goat IgM Whole Molecule. Load: 1 ug for IgG, F(c) and F(ab); 3 ug for IgM. Predicted/Observed size: IgG at 50 and 25 kDa; F(c) at 25 kDa; F(ab) at 25 kDa; IgM at 70 and 23 kDa. Observed F(c) Fragment migrates slightly higher.



Dot Blot: Goat IgG Fc Isotype Control [NBP1-97042] - Dot Blot: Goat IgG Fc Isotype Control [Rhodamine] [NBP1-96842] - Dot Blot of Rhodamine Conjugated Goat IgG Fc. Dotted Rhodamine Conjugated Goat IgG Fc with following concentrations. Load: Lane 1 - 50ng Lane 2 - 16.67ng Lane 3 - 5.56ng Lane 4 - 1.85ng Lane 5 - 0.62ng Image using the Rhodamine form of this antibody.





Novus Biologicals USA

10730 E. Briarwood Avenue
Centennial, CO 80112
USA
Phone: 303.730.1950
Toll Free: 1.888.506.6887
Fax: 303.730.1966
nb-customerservice@bio-techne.com

Bio-Techne Canada

21 Canmotor Ave
Toronto, ON M8Z 4E6
Canada
Phone: 905.827.6400
Toll Free: 855.668.8722
Fax: 905.827.6402
canada.inquires@bio-techne.com

Bio-Techne Ltd

19 Barton Lane
Abingdon Science Park
Abingdon, OX14 3NB, United Kingdom
Phone: (44) (0) 1235 529449
Free Phone: 0800 37 34 15
Fax: (44) (0) 1235 533420
info.EMEA@bio-techne.com

General Contact Information

www.novusbio.com
Technical Support: nb-technical@bio-techne.com
Orders: nb-customerservice@bio-techne.com
General: novus@novusbio.com

Limitations

This product is for research use only and is not approved for use in humans or in clinical diagnosis. Isotype Controls are guaranteed for 1 year from date of receipt.

For more information on our 100% guarantee, please visit www.novusbio.com/guarantee

Earn gift cards/discounts by submitting a review: www.novusbio.com/reviews/submit/NBP1-97042

Earn gift cards/discounts by submitting a publication using this product:
www.novusbio.com/publications

