

# Product Datasheet

## Rabbit IgG Isotype Control

### NBP1-97041-10mg

Unit Size: 10 mg

Store lyophilized antibody at 4C. Aliquot reconstituted liquid and store at -20C. Avoid freeze-thaw cycles.

[www.novusbio.com](http://www.novusbio.com)



[technical@novusbio.com](mailto:technical@novusbio.com)

Protocols, Publications, Related Products, Reviews, Research Tools and Images at:  
[www.novusbio.com/NBP1-97041](http://www.novusbio.com/NBP1-97041)

Updated 7/23/2023 v.20.1

Earn rewards for product  
reviews and publications.

Submit a publication at [www.novusbio.com/publications](http://www.novusbio.com/publications)

Submit a review at [www.novusbio.com/reviews/destination/NBP1-97041](http://www.novusbio.com/reviews/destination/NBP1-97041)



**NBP1-97041-10mg**

Rabbit IgG Isotype Control

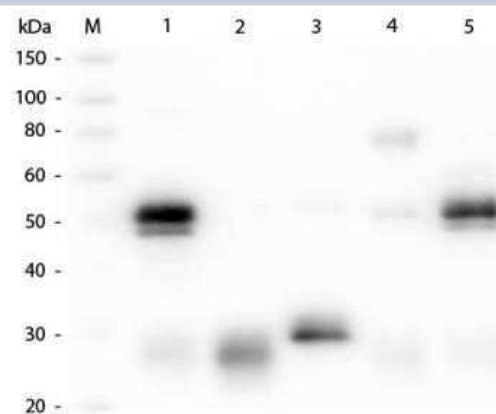
Product Information	
Unit Size	10 mg
Concentration	LYOPH mg/ml
Storage	Store lyophilized antibody at 4C. Aliquot reconstituted liquid and store at -20C. Avoid freeze-thaw cycles.
Preservative	0.01% Sodium Azide
Reconstitution Instructions	Reconstitute with 1.0 ml deionized water (or equivalent).
Isotype	IgG
Purity	Multi-step
Buffer	Lyophilized from 0.02 M Potassium Phosphate, 0.15 M Sodium Chloride, pH 7.2

Product Description	
Description	<p>This product was prepared from normal serum by a multi-step process which includes delipidation, salt fractionation and ion exchange chromatography followed by extensive dialysis against the buffer stated above. Assay by immunoelectrophoresis resulted in a single precipitin arc against anti-Rabbit IgG and anti-Rabbit Serum.</p> <p>Store vial at 4C prior to restoration. For extended storage aliquot contents and freeze at -20C or below. Avoid cycles of freezing and thawing. Centrifuge product if not completely clear after standing at room temperature. This product is stable for several weeks at 4C as an undiluted liquid. Dilute only prior to immediate use.</p>
Host	Rabbit
Gene ID	3500
Gene Symbol	IGHG1
Species	Rabbit

Product Application Details	
Applications	Western Blot, ELISA, Immunohistochemistry, SDS-Page
Recommended Dilutions	Western Blot 1:100 - 1:2000, ELISA 1:100 - 1:2000, Immunohistochemistry 1:10 - 1:500, SDS-Page 1:100 - 1:2000
Application Notes	This product has been tested in SDS-Page and can be utilized as a control or standard reagent in Western Blotting and ELISA experiments.

**Images**

Western Blot: Rabbit IgG Isotype Control [NBP1-97041] - Lane M: 3 ul Molecular Ladder. Lane 1: Rabbit IgG whole molecule (NBP2-36463). Lane 2: Rabbit IgG F(ab) Fragment (NBP1-97016). Lane 3: Rabbit IgG F(c) Fragment (NBP1-96784). Lane 4: Rabbit IgM Whole Molecule (NBP1-96968). Lane 5: Normal Rabbit Serum. All samples were reduced. Load: 50 ng per lane. Blocked in blocking buffer for 30 min at RT. Primary Antibody: Anti-Rabbit IgG (H&L) (GOAT) Antibody (Min X Bv, Ch, Gt, GP, Ham, Hs, Hu, Ms, Rt & Sh Serum Proteins. (NBP1-72732) 1:1,000 for 60 min at RT. Secondary antibody: Anti-Goat IgG (DONKEY) Peroxidase Conjugated Antibody 1:40,000 in blocking buffer for 30 min at RT. Predicted/Observed Size: 25 and 50 kDa for Rabbit IgG and Serum, 25 kDa for F(c) and F(ab), 70 and 23 kDa for IgM. Rabbit F(c) migrates slightly higher.

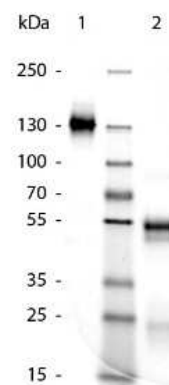


Western Blot: Rabbit IgG Isotype Control [NBP1-97041]

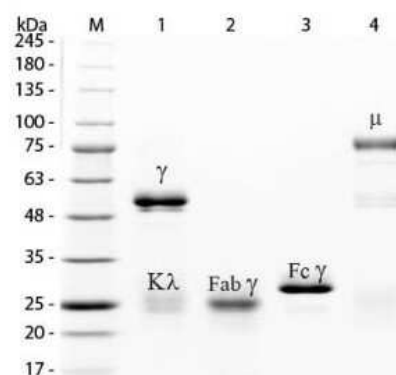


1 2

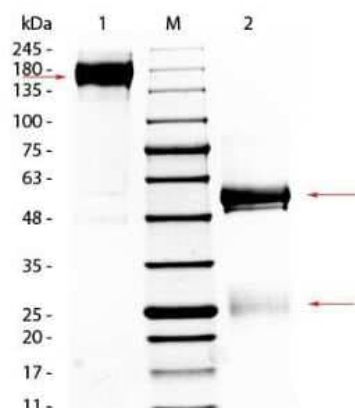
SDS-Page: Rabbit IgG Isotype Control [NBP1-97041] - Lane 1: Rabbit IgG - Non-Reduced. Lane 2: Rabbit IgG - Reduced. Load: 1.0 ug per lane. Predicted/Observed Size: Non-reduced - 130 kDa, Reduced - 55 and 28 kDa for Rabbit IgG.



SDS-Page: Rabbit IgG Isotype Control [NBP1-97041] - SDS-PAGE of Rabbit IgG Isotype control. Lane M: 3 uL Opal Prestained Marker. Lane 1: Reduced Rabbit IgG Isotype control. Lane 2: Reduced Rabbit IgG F(ab) Fragment. Lane 3: Reduced Rabbit IgG F(c) Fragment. Lane 4: Reduced Rabbit IgM Whole Molecule. Load: 1 ug for F(ab) and F(c); 1.2 ug for IgG and IgM. Predicted/Observed size: IgG at 50 and 25 kDa; F(c) at 25 kDa; F(ab) at 25 kDa; IgM at 70 and 23 kDa. Observed F(c) Fragment migrates slightly higher.



SDS-Page: Rabbit IgG Isotype Control [NBP1-97041] - SDS-PAGE of Rabbit IgG Isotype control. Lane 1: Non-reduced Rabbit IgG Isotype control. Lane 2: 5uL OPAL Pre-stained Marker. Lane 3: Reduced Rabbit IgG Isotype control. Load: 1ug per lane. Predicted/Observed size: Non-reduced at 150-170 kDa , Reduced at 55, 25 kDa.





### **Novus Biologicals USA**

10730 E. Briarwood Avenue  
Centennial, CO 80112  
USA  
Phone: 303.730.1950  
Toll Free: 1.888.506.6887  
Fax: 303.730.1966  
nb-customerservice@bio-techne.com

### **Bio-Techne Canada**

21 Canmotor Ave  
Toronto, ON M8Z 4E6  
Canada  
Phone: 905.827.6400  
Toll Free: 855.668.8722  
Fax: 905.827.6402  
canada.inquires@bio-techne.com

### **Bio-Techne Ltd**

19 Barton Lane  
Abingdon Science Park  
Abingdon, OX14 3NB, United Kingdom  
Phone: (44) (0) 1235 529449  
Free Phone: 0800 37 34 15  
Fax: (44) (0) 1235 533420  
info.EMEA@bio-techne.com

### **General Contact Information**

www.novusbio.com  
Technical Support: nb-technical@bio-techne.com  
Orders: nb-customerservice@bio-techne.com  
General: novus@novusbio.com

### **Products Related to NBP1-97041-10mg**

---

NBP1-99013-50ug	Recombinant Mouse IgG Protein
NB200-540	Complement C3 Antibody (11H9) - BSA Free
HAF007	Goat anti-Mouse IgG Secondary Antibody [HRP]
NB7276	Goat anti-Chicken IgM Heavy Chain Secondary Antibody

---

### **Limitations**

This product is for research use only and is not approved for use in humans or in clinical diagnosis. Isotype Controls are guaranteed for 1 year from date of receipt.

For more information on our 100% guarantee, please visit [www.novusbio.com/guarantee](http://www.novusbio.com/guarantee)

Earn gift cards/discounts by submitting a review: [www.novusbio.com/reviews/submit/NBP1-97041](http://www.novusbio.com/reviews/submit/NBP1-97041)

Earn gift cards/discounts by submitting a publication using this product:  
[www.novusbio.com/publications](http://www.novusbio.com/publications)

