

Product Datasheet

Chicken IgG Isotype Control

NBP1-97037-5mg

Unit Size: 5 mg

Store lyophilized antibody at 4C. Aliquot reconstituted liquid and store at -20C. Avoid freeze-thaw cycles.

www.novusbio.com



technical@novusbio.com

Protocols, Publications, Related Products, Reviews, Research Tools and Images at:
www.novusbio.com/NBP1-97037

Updated 7/23/2023 v.20.1

Earn rewards for product
reviews and publications.

Submit a publication at www.novusbio.com/publications

Submit a review at www.novusbio.com/reviews/destination/NBP1-97037



NBP1-97037-5mg

Chicken IgG Isotype Control

Product Information	
Unit Size	5 mg
Concentration	LYOPH mg/ml
Storage	Store lyophilized antibody at 4C. Aliquot reconstituted liquid and store at -20C. Avoid freeze-thaw cycles.
Preservative	0.01% Sodium Azide
Reconstitution Instructions	Reconstitute with 500 ul deionized water (or equivalent).
Isotype	IgG
Purity	Multi-step
Buffer	Lyophilized from 0.02 M Potassium Phosphate, 0.15 M Sodium Chloride, pH 7.2

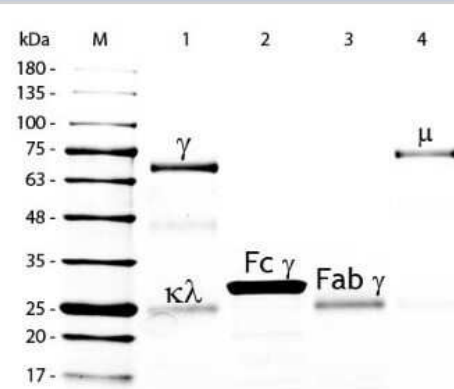
Product Description	
Description	<p>This product was prepared from normal serum by a multi-step process which includes delipidation, salt fractionation and ion exchange chromatography followed extensive dialysis against the buffer stated above. Assay by immunoelectrophoresis resulted in a single precipitin arc against anti-Chicken IgG and anti-Chicken Serum.</p> <p>Store vial at 4C prior to restoration. Restore with deionized water (or equivalent). For extended storage aliquot contents and freeze at -20C or below. Avoid cycles of freezing and thawing. Centrifuge product if not completely clear after standing at room temperature. This product is stable for several weeks at 4C as an undiluted liquid. Dilute only prior to immediate use. Expiration date is one (1) year from date of restoration.</p>
Host	Chicken
Gene ID	3500
Gene Symbol	IGHG1
Species	Chicken

Product Application Details	
Applications	Western Blot, ELISA, Immunohistochemistry, SDS-Page
Recommended Dilutions	Western Blot 1:100 - 1:2000, ELISA 1:100 - 1:2000, Immunohistochemistry 1:10 - 1:500, SDS-Page
Application Notes	This product has been tested in SDS-Page and can be utilized as a control or standard reagent in Western Blotting and ELISA experiments.



Images

Western Blot: Chicken IgG Isotype Control [NBP1-97037] - SDS-Page:
 Chicken IgG Isotype Control [Agarose Immobilized] [NBP1-97189] - Lane
 M: 5 uL Opal Prestained Marker. Lane 1: Reduced Chicken IgG Whole
 Molecule Agarose Conjugated. Lane 2: Reduced Chicken IgG F(c)
 Fragment. Lane 3: Reduced Chicken IgG Fab Fragment. Lane 4:
 Reduced Chicken IgM Whole Molecule. Load: 1 ug per lane. Image
 using the Agarose form of this antibody.





Novus Biologicals USA

10730 E. Briarwood Avenue
Centennial, CO 80112
USA
Phone: 303.730.1950
Toll Free: 1.888.506.6887
Fax: 303.730.1966
nb-customerservice@bio-techne.com

Bio-Techne Canada

21 Canmotor Ave
Toronto, ON M8Z 4E6
Canada
Phone: 905.827.6400
Toll Free: 855.668.8722
Fax: 905.827.6402
canada.inquires@bio-techne.com

Bio-Techne Ltd

19 Barton Lane
Abingdon Science Park
Abingdon, OX14 3NB, United Kingdom
Phone: (44) (0) 1235 529449
Free Phone: 0800 37 34 15
Fax: (44) (0) 1235 533420
info.EMEA@bio-techne.com

General Contact Information

www.novusbio.com
Technical Support: nb-technical@bio-techne.com
Orders: nb-customerservice@bio-techne.com
General: novus@novusbio.com

Products Related to NBP1-97037-5mg

NBP1-99013-50ug	Recombinant Mouse IgG Protein
NB200-540	Complement C3 Antibody (11H9) - BSA Free
HAF008	Goat anti-Rabbit IgG Secondary Antibody [HRP]
NBP2-29373-100Tests	Annexin V Apoptosis Kit [FITC]

Limitations

This product is for research use only and is not approved for use in humans or in clinical diagnosis. Isotype Controls are guaranteed for 1 year from date of receipt.

For more information on our 100% guarantee, please visit www.novusbio.com/guarantee

Earn gift cards/discounts by submitting a review: www.novusbio.com/reviews/submit/NBP1-97037

Earn gift cards/discounts by submitting a publication using this product:
www.novusbio.com/publications

