

Product Datasheet

Feline IgG, Fab2 Native Protein NBP1-97027-1mg

Unit Size: 1 mg

Store at 4C short term. For extended storage, add an equal volume of glycerol, aliquot and store at -20C or below. Avoid repeated freeze-thaw cycles.

www.novusbio.com



technical@novusbio.com

Protocols, Publications, Related Products, Reviews, Research Tools and Images at:
www.novusbio.com/NBP1-97027

Updated 9/11/2023 v.20.1

Earn rewards for product
reviews and publications.

Submit a publication at www.novusbio.com/publications

Submit a review at www.novusbio.com/reviews/destination/NBP1-97027



NBP1-97027-1mg

Feline IgG, Fab2 Native Protein

Product Information

Unit Size	1 mg
Concentration	Please see the vial label for concentration. If unlisted please contact technical services.
Storage	Store at 4C short term. For extended storage, add an equal volume of glycerol, aliquot and store at -20C or below. Avoid repeated freeze-thaw cycles.
Preservative	0.01% Sodium Azide
Purity	Multi-step
Buffer	0.02 M Potassium Phosphate, 0.15 M Sodium Chloride, pH 7.2

Product Description

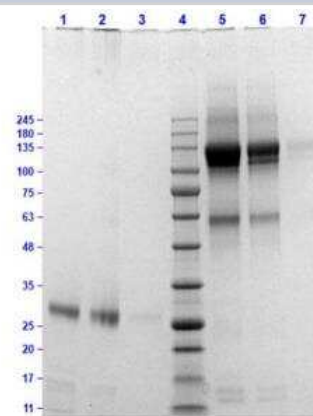
Description	<p>Native Feline Feline IgG, Fab2</p> <p>Source: Normal serum (Accession #:38201661)</p> <p>Store vial at 4C prior to opening. This product is stable 4C as an undiluted liquid. Dilute only prior to immediate use. For extended storage mix with an equal volume of glycerol, aliquot contents and freeze at -20C or below. Avoid cycles of freezing and thawing.</p>
Species	Feline
Preparation Method	This product was prepared from normal serum by a multi-step process which includes delipidation, salt fractionation and ion exchange chromatography followed by pepsin digestion and extensive dialysis against the buffer stated above. Assay by immunoelectrophoresis resulted in a single precipitin arc against anti-Cat IgG, anti-Cat IgG F(ab') ₂ and anti-Cat Serum. No reaction was observed against anti-Cat IgG F(c) or anti-Pepsin.

Product Application Details

Applications	SDS-Page
Recommended Dilutions	SDS-Page
Application Notes	This product can be utilized as a control or standard reagent in Western Blotting and ELISA experiments.

Images

SDS-Page: Feline IgG, Fab2 Native Protein [NBP1-97027] - SDS-PAGE Results of Feline F(ab)₂ fragment. Lane 1: Feline F(ab)₂ Reduced 10ug. Lane 2: Feline F(ab)₂ Reduced 5ug. Lane 3: Feline F(ab)₂ Reduced 1ug. Lane 4: Opal Prestained Molecular Weight Marker. Lane 5: Feline F(ab)₂ Non-Reduced 10ug. Lane 6: Feline F(ab)₂ Non-Reduced 5ug. Lane 7: Feline F(ab)₂ Non-Reduced 1ug. 4-20% Gel, Coomassie stained.





Novus Biologicals USA

10730 E. Briarwood Avenue
Centennial, CO 80112
USA
Phone: 303.730.1950
Toll Free: 1.888.506.6887
Fax: 303.730.1966
nb-customerservice@bio-techne.com

Bio-Techne Canada

21 Canmotor Ave
Toronto, ON M8Z 4E6
Canada
Phone: 905.827.6400
Toll Free: 855.668.8722
Fax: 905.827.6402
canada.inquires@bio-techne.com

Bio-Techne Ltd

19 Barton Lane
Abingdon Science Park
Abingdon, OX14 3NB, United Kingdom
Phone: (44) (0) 1235 529449
Free Phone: 0800 37 34 15
Fax: (44) (0) 1235 533420
info.EMEA@bio-techne.com

General Contact Information

www.novusbio.com
Technical Support: nb-technical@bio-techne.com
Orders: nb-customerservice@bio-techne.com
General: novus@novusbio.com

Limitations

This product is for research use only and is not approved for use in humans or in clinical diagnosis. Peptides and proteins are guaranteed for 3 months from date of receipt.

For more information on our 100% guarantee, please visit www.novusbio.com/guarantee

Earn gift cards/discounts by submitting a review: www.novusbio.com/reviews/submit/NBP1-97027

Earn gift cards/discounts by submitting a publication using this product:
www.novusbio.com/publications

