

Product Datasheet

DNASE1L2 Antibody NBP1-91429-20ul

Unit Size: 20 ul

Store at -20C. Avoid freeze-thaw cycles.

www.novusbio.com



technical@novusbio.com

Protocols, Publications, Related Products, Reviews, Research Tools and Images at:
www.novusbio.com/NBP1-91429

Updated 2/29/2024 v.20.1

Earn rewards for product
reviews and publications.

Submit a publication at www.novusbio.com/publications

Submit a review at www.novusbio.com/reviews/destination/NBP1-91429



NBP1-91429-20ul**DNASE1L2 Antibody****Product Information**

| | |
|--------------------------------|---|
| Unit Size | 20 ul |
| Concentration | Please see the vial label for concentration. If unlisted please contact technical services. |
| Storage | Store at -20C. Avoid freeze-thaw cycles. |
| Clonality | Polyclonal |
| Preservative | 0.09% Sodium Azide |
| Isotype | IgG |
| Purity | Immunogen affinity purified |
| Buffer | PBS, 2% Sucrose |
| Target Molecular Weight | 40 kDa |

Product Description

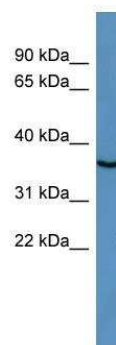
| | |
|--------------------|---|
| Description | The addition of 50% glycerol is optional for those storing this antibody at -20C and not aliquoting smaller units. However, please note that glycerol may interrupt some downstream antibody applications and should be added with caution. |
| Host | Rabbit |
| Gene ID | 1775 |
| Gene Symbol | DNASE1L2 |
| Species | Rat |
| Immunogen | Synthetic peptide directed towards the middle region of human LOC100364462. Peptide sequence LIPLHAAPNQAVAEIDALYDVYLDVIDKWNTDDMLFLGDFNADCKYVKAH. The peptide sequence for this immunogen was taken from within the described region. |

Product Application Details

| | |
|------------------------------|------------------------|
| Applications | Western Blot |
| Recommended Dilutions | Western Blot 1.0 ug/ml |

Images

Western Blot: DNASE1L2 Antibody [NBP1-91429] - Titration: 0.2-1 ug/ml, Positive Control: Rat Muscle.





Novus Biologicals USA

10730 E. Briarwood Avenue
Centennial, CO 80112
USA
Phone: 303.730.1950
Toll Free: 1.888.506.6887
Fax: 303.730.1966
nb-customerservice@bio-techne.com

Bio-Techne Canada

21 Canmotor Ave
Toronto, ON M8Z 4E6
Canada
Phone: 905.827.6400
Toll Free: 855.668.8722
Fax: 905.827.6402
canada.inquires@bio-techne.com

Bio-Techne Ltd

19 Barton Lane
Abingdon Science Park
Abingdon, OX14 3NB, United Kingdom
Phone: (44) (0) 1235 529449
Free Phone: 0800 37 34 15
Fax: (44) (0) 1235 533420
info.EMEA@bio-techne.com

General Contact Information

www.novusbio.com
Technical Support: nb-technical@bio-techne.com
Orders: nb-customerservice@bio-techne.com
General: novus@novusbio.com

Limitations

This product is for research use only and is not approved for use in humans or in clinical diagnosis. Primary Antibodies are guaranteed for 1 year from date of receipt.

For more information on our 100% guarantee, please visit www.novusbio.com/guarantee

Earn gift cards/discounts by submitting a review: www.novusbio.com/reviews/submit/NBP1-91429

Earn gift cards/discounts by submitting a publication using this product:
www.novusbio.com/publications

