

Product Datasheet

alpha-Synuclein Antibody NBP1-61418-0.05ml

Unit Size: 0.05 ml

Store at -20C. Avoid freeze-thaw cycles.

www.novusbio.com



technical@novusbio.com

Protocols, Publications, Related Products, Reviews, Research Tools and Images at:
www.novusbio.com/NBP1-61418

Updated 10/19/2021 v.20.1

Earn rewards for product
reviews and publications.

Submit a publication at www.novusbio.com/publications

Submit a review at www.novusbio.com/reviews/destination/NBP1-61418



NBP1-61418-0.05ml

alpha-Synuclein Antibody

Product Information	
Unit Size	0.05 ml
Concentration	1 mg/ml
Storage	Store at -20C. Avoid freeze-thaw cycles.
Clonality	Polyclonal
Preservative	0.02% Sodium Azide
Isotype	IgG
Purity	Immunogen affinity purified
Buffer	PBS (without Mg ²⁺ and Ca ²⁺ , pH 7.4), 0.15M NaCl and 50% Glycerol
Target Molecular Weight	14 kDa

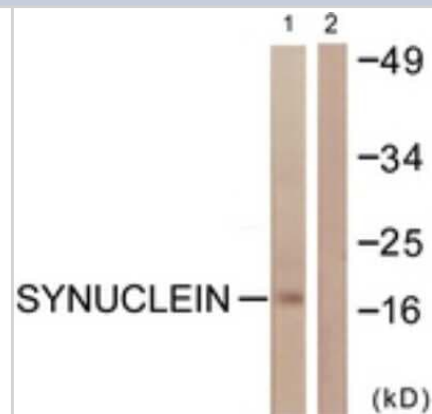
Product Description	
Host	Rabbit
Gene ID	6622
Gene Symbol	SNCA
Species	Human, Mouse, Rat
Specificity/Sensitivity	This alpha-Synuclein Antibody is specific for Synuclein (Ab-129) Antibody detects endogenous levels of total synuclein protein.
Immunogen	This alpha-Synuclein Antibody was developed against synthesized peptide derived from human alpha-Synuclein. The immunogen region is: C-terminal.

Product Application Details	
Applications	Western Blot, ELISA, Immunohistochemistry, Immunohistochemistry-Paraffin
Recommended Dilutions	Western Blot 1:500-1:1000, ELISA 1:1000, Immunohistochemistry 1:50-1:100, Immunohistochemistry-Paraffin 1:50-1:100

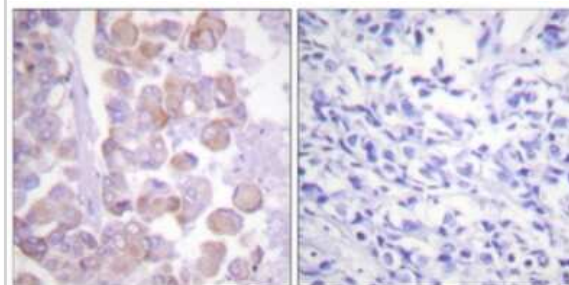


Images

Western Blot: alpha-Synuclein Antibody [NBP1-61418] - Analysis of extracts from HuvEc cells, using alpha-Synuclein Antibody. The lane on the right is treated with the synthesized peptide.



Immunohistochemistry-Paraffin: alpha-Synuclein Antibody [NBP1-61418] - Analysis of paraffin-embedded human breast carcinoma tissue, using alpha-Synuclein Antibody. The picture on the right is treated with the synthesized peptide.





Novus Biologicals USA

10730 E. Briarwood Avenue
Centennial, CO 80112
USA
Phone: 303.730.1950
Toll Free: 1.888.506.6887
Fax: 303.730.1966
nb-customerservice@bio-techne.com

Bio-Techne Canada

21 Canmotor Ave
Toronto, ON M8Z 4E6
Canada
Phone: 905.827.6400
Toll Free: 855.668.8722
Fax: 905.827.6402
canada.inquires@bio-techne.com

Bio-Techne Ltd

19 Barton Lane
Abingdon Science Park
Abingdon, OX14 3NB, United Kingdom
Phone: (44) (0) 1235 529449
Free Phone: 0800 37 34 15
Fax: (44) (0) 1235 533420
info.EMEA@bio-techne.com

General Contact Information

www.novusbio.com
Technical Support: nb-technical@bio-techne.com
Orders: nb-customerservice@bio-techne.com
General: novus@novusbio.com

Limitations

This product is for research use only and is not approved for use in humans or in clinical diagnosis. Primary Antibodies are guaranteed for 1 year from date of receipt.

For more information on our 100% guarantee, please visit www.novusbio.com/guarantee

Earn gift cards/discounts by submitting a review: www.novusbio.com/reviews/submit/NBP1-61418

Earn gift cards/discounts by submitting a publication using this product:
www.novusbio.com/publications

