

Product Datasheet

Calreticulin Antibody (1G6A7) [FITC] NBP1-47518F

Unit Size: 0.1 ml

Store at 4C in the dark.

www.novusbio.com



technical@novusbio.com

Publications: 1

Protocols, Publications, Related Products, Reviews, Research Tools and Images at:
www.novusbio.com/NBP1-47518F

Updated 10/23/2024 v.20.1

Earn rewards for product
reviews and publications.

Submit a publication at www.novusbio.com/publications

Submit a review at www.novusbio.com/reviews/destination/NBP1-47518F



NBP1-47518F

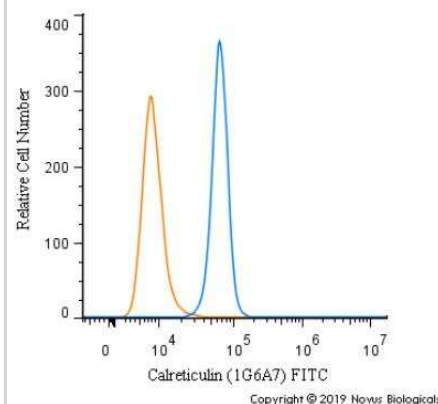
Calreticulin Antibody (1G6A7) [FITC]

Product Information	
Unit Size	0.1 ml
Concentration	Please see the vial label for concentration. If unlisted please contact technical services.
Storage	Store at 4C in the dark.
Clonality	Monoclonal
Clone	1G6A7
Preservative	0.05% Sodium Azide
Isotype	IgG2a
Conjugate	FITC
Purity	Ammonium sulfate precipitation
Buffer	PBS
Product Description	
Host	Mouse
Gene ID	811
Gene Symbol	CALR
Species	Human, Mouse
Marker	Endoplasmic Reticulum Marker
Immunogen	Calreticulin Antibody (1G6A7) was developed against a synthetic peptide corresponding to the C-terminus (EEEDVPGQAKDELC) of human Calreticulin, conjugated to KLH. [UniProt# P27797]
Notes	This conjugate is made on demand. Actual recovery may vary from the stated volume of this product. The volume will be greater than or equal to the unit size stated on the datasheet.
Product Application Details	
Applications	Western Blot, ELISA, Flow Cytometry, Flow (Intracellular), Immunocytochemistry/ Immunofluorescence, Immunohistochemistry, Immunohistochemistry-Paraffin, In vitro assay
Recommended Dilutions	Western Blot, Flow Cytometry, ELISA, Immunohistochemistry, Immunocytochemistry/ Immunofluorescence, Immunohistochemistry-Paraffin, In vitro assay, Flow (Intracellular)
Application Notes	Optimal dilution of this antibody should be experimentally determined.

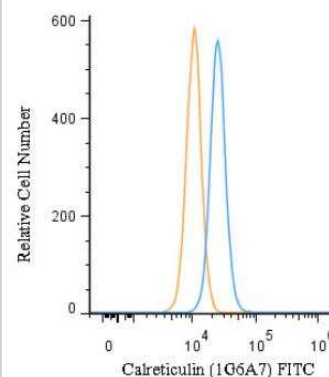


Images

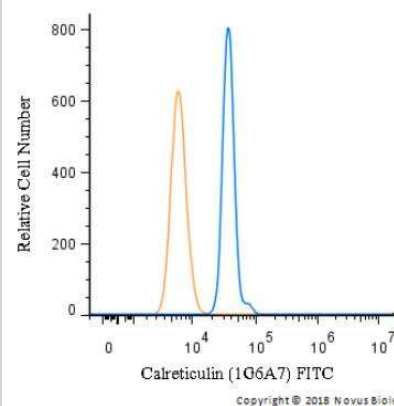
Flow Cytometry: Calreticulin Antibody (1G6A7) [FITC] [NBP1-47518F] -
 An intracellular stain was performed on NIH3T3 cells with Calreticulin Antibody (1G6A7) NBP1-47518F (blue) and a matched isotype control (orange). Cells were fixed with 4% PFA and then permeabilized with 0.1% saponin. Cells were incubated in an antibody dilution of 5 ug/mL for 30 minutes at room temperature. Both antibodies were conjugated to FITC.



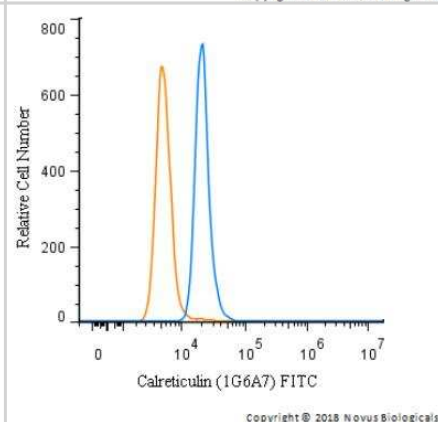
Flow (Intracellular): Calreticulin Antibody (1G6A7) [FITC] [NBP1-47518F] -
 An intracellular stain was performed on HeLa cells with Calreticulin Antibody (1G6A7) NBP1-47518F (blue) and a matched isotype control (orange). Cells were fixed with 4% PFA and then permeabilized with 0.1% saponin. Cells were incubated in an antibody dilution of 10 ug/mL for 30 minutes at room temperature. Both antibodies were conjugated to FITC.



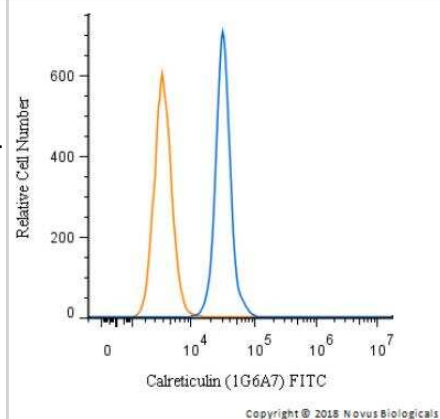
Flow Cytometry: Calreticulin Antibody (1G6A7) [FITC] [NBP1-47518F] -
 An intracellular stain was performed on U-937 cells with Calreticulin Antibody (1G6A7) NBP1-47518F (blue) and a matched isotype control (orange). Cells were fixed with 4% PFA and then permeabilized with 0.1% saponin. Cells were incubated in an antibody dilution of 5 ug/mL for 30 minutes at room temperature. Both antibodies were conjugated to FITC.



Flow Cytometry: Calreticulin Antibody (1G6A7) [FITC] [NBP1-47518F] -
 An intracellular stain was performed on A549 cells with Calreticulin Antibody (1G6A7) NBP1-47518F (blue) and a matched isotype control (orange). Cells were fixed with 4% PFA and then permeabilized with 0.1% saponin. Cells were incubated in an antibody dilution of 5 ug/mL for 30 minutes at room temperature. Both antibodies were conjugated to FITC.



Flow Cytometry: Calreticulin Antibody (1G6A7) [FITC] [NBP1-47518F] - An intracellular stain was performed on Jurkat cells with Calreticulin Antibody (1G6A7) NBP1-47518F (blue) and a matched isotype control (orange). Cells were fixed with 4% PFA and then permeabilized with 0.1% saponin. Cells were incubated in an antibody dilution of 5 ug/mL for 30 minutes at room temperature. Both antibodies were conjugated to FITC.



Publications

Jihoon Kim, David M. Francis, Lauren F. Sestito, Paul A. Archer, Margaret P. Manspeaker, Meghan J. O'Melia, Susan N. Thomas Thermosensitive hydrogel releasing nitric oxide donor and anti-CTLA-4 micelles for anti-tumor immunotherapy Nature Communications 2022-03-18 [PMID: 35304456]



Novus Biologicals USA

10730 E. Briarwood Avenue
Centennial, CO 80112
USA
Phone: 303.730.1950
Toll Free: 1.888.506.6887
Fax: 303.730.1966
nb-customerservice@bio-techne.com

Bio-Techne Canada

21 Canmotor Ave
Toronto, ON M8Z 4E6
Canada
Phone: 905.827.6400
Toll Free: 855.668.8722
Fax: 905.827.6402
canada.inquires@bio-techne.com

Bio-Techne Ltd

19 Barton Lane
Abingdon Science Park
Abingdon, OX14 3NB, United Kingdom
Phone: (44) (0) 1235 529449
Free Phone: 0800 37 34 15
Fax: (44) (0) 1235 533420
info.EMEA@bio-techne.com

General Contact Information

www.novusbio.com
Technical Support: nb-technical@bio-techne.com
Orders: nb-customerservice@bio-techne.com
General: novus@novusbio.com

Products Related to NBP1-47518F

NBP1-96848	Mouse IgG2a Isotype Control (M2A) [FITC]
NBP1-44499	Recombinant Human Calreticulin His Protein
210-TA-005	TNF-alpha [Unconjugated]
NBP3-06819	Human Calreticulin ELISA Kit (Colorimetric)

Limitations

This product is for research use only and is not approved for use in humans or in clinical diagnosis. Primary Antibodies are guaranteed for 1 year from date of receipt.

For more information on our 100% guarantee, please visit www.novusbio.com/guarantee

Earn gift cards/discounts by submitting a review: www.novusbio.com/reviews/submit/NBP1-47518F

Earn gift cards/discounts by submitting a publication using this product:
www.novusbio.com/publications

