

Product Datasheet

SIN3A Antibody NB600-1263-100ug

Unit Size: 100 ug

Store at -20C. Avoid freeze-thaw cycles.

www.novusbio.com



technical@novusbio.com

Publications: 6

Protocols, Publications, Related Products, Reviews, Research Tools and Images at:
www.novusbio.com/NB600-1263

Updated 9/9/2025 v.20.1

Earn rewards for product
reviews and publications.

Submit a publication at www.novusbio.com/publications

Submit a review at www.novusbio.com/reviews/destination/NB600-1263



NB600-1263-100ug

SIN3A Antibody

| Product Information | |
|-------------------------|------------------------------------------|
| Unit Size | 100 ug |
| Concentration | 1 mg/ml |
| Storage | Store at -20C. Avoid freeze-thaw cycles. |
| Clonality | Polyclonal |
| Preservative | 0.05% Sodium Azide |
| Isotype | IgG |
| Purity | Immunogen affinity purified |
| Buffer | PBS with 1 mg/ml BSA |
| Target Molecular Weight | 145 kDa |

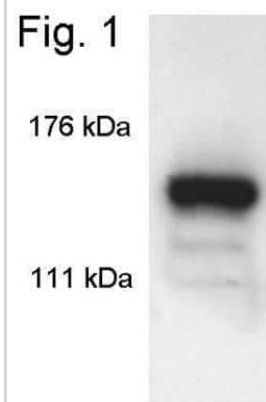
| Product Description | |
|-------------------------|----------------------------------------------------------------------------------------------------------------------------------------------------------------------------------------------------------------------------------------------------------|
| Description | Novus Biologicals Rabbit SIN3A Antibody (NB600-1263) is a polyclonal antibody validated for use in IHC, WB, Flow, ICC/IF, IP and ChIP. Anti-SIN3A Antibody: Cited in 6 publications. All Novus Biologicals antibodies are covered by our 100% guarantee. |
| Host | Rabbit |
| Gene ID | 25942 |
| Gene Symbol | SIN3A |
| Species | Human, Mouse, Rat |
| Reactivity Notes | Rat reactivity reported in scientific literature (PMID: 23280436). |
| Specificity/Sensitivity | mSin 3A |
| Immunogen | Synthetic peptide corresponding to residues M(1) K R R L D D Q E S D V Y A A Q Q R R(19) of mouse mSin3A. |

| Product Application Details | |
|-----------------------------|------------------------------------------------------------------------------------------------------------------------------------------------------------------------------------------------------------------------------------------------------------|
| Applications | Western Blot, Immunohistochemistry-Paraffin, Flow Cytometry, Immunocytochemistry/ Immunofluorescence, Immunohistochemistry, Immunoprecipitation, Chromatin Immunoprecipitation (ChIP) |
| Recommended Dilutions | Western Blot 0.5 ug/ml, Flow Cytometry, Immunohistochemistry 1:10 - 1:500, Immunocytochemistry/ Immunofluorescence 1:50 - 1:500, Immunoprecipitation 1:10 - 1:500, Immunohistochemistry-Paraffin 1:50 - 1:500, Chromatin Immunoprecipitation (ChIP) 1-3 ul |
| Application Notes | Use in FLOW reported in scientific literature (PMID 28260693). |

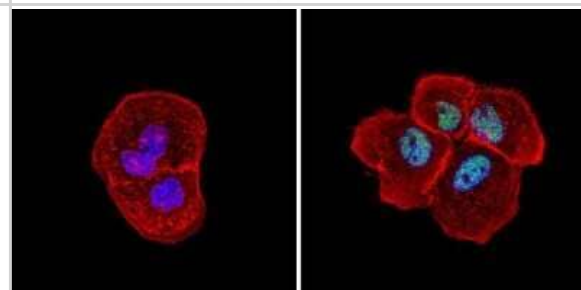


Images

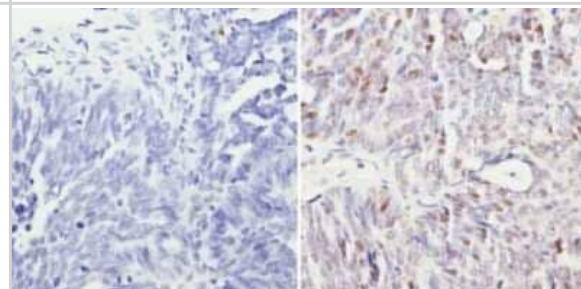
Western Blot: SIN3A Antibody [NB600-1263] - Analysis of K562 cell extract.



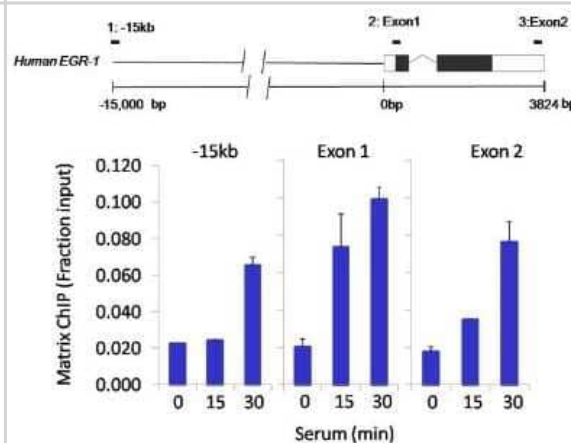
Immunocytochemistry/Immunofluorescence: SIN3A Antibody [NB600-1263] - Analysis of Sin3A (green) showing staining in the nucleus of A431 cells (right) compared to a negative control without primary antibody (left).



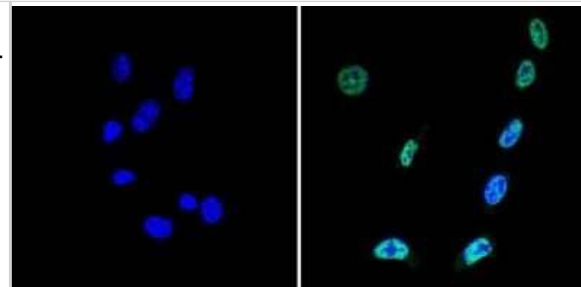
Immunohistochemistry-Paraffin: SIN3A Antibody [NB600-1263] - Analysis showing staining in the nucleus of human ovary carcinoma (right) compared to a negative control without primary antibody (left).



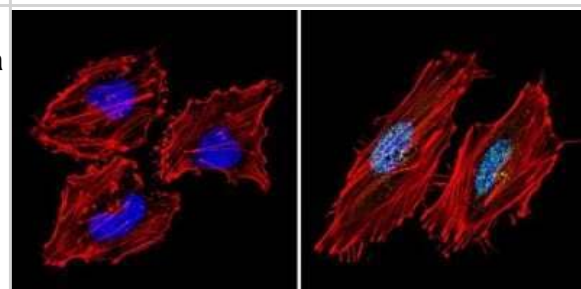
Chromatin Immunoprecipitation: SIN3A Antibody [NB600-1263] - Analysis of Sin3A performed using cross-linked chromatin from colon carcinoma cells treated with serum. Immunoprecipitation performed using a multiplex microplate Matrix ChIP assay with Sin3A polyclonal antibody. Chromatin aliquots from cells were used per ChIP pull-down. Quantitative PCR data done in quadruplicate using 1ul of eluted DNA in 2ul SYBR real-time PCR reactions containing primers to amplify -15kb upstream of the Egr1 gene or exon-1 or exon-2 of Egr1. Quantitation of immunoprecipitated chromatin is presented as signal relative to the total amount of input chromatin. A representation of the Egr-1 locus is shown; boxes represent exons (black boxes = translated, white boxes = untranslated), the zigzag line represents an intron, and the straight line represents upstream sequence. Regions amplified by Egr-1 primers are represented by black bars. Data courtesy of the Innovators Program.



Immunocytochemistry/Immunofluorescence: SIN3A Antibody [NB600-1263] - Analysis of Sin3A (green) showing staining in the nucleus of NIH-3T3 cells (right) compared to a negative control without primary antibody (left).



Immunocytochemistry/Immunofluorescence: SIN3A Antibody [NB600-1263] - Analysis of Sin3A (green) showing staining in the nucleus of Hela cells (right) compared to a negative control without primary antibody (left).



Publications

Dufour CR, Scholtes C, Yan M et al. The mTOR chromatin-bound interactome in prostate cancer Cell reports 2022-03-22 [PMID: 35320709] (Chemotaxis, Human)

Almenar-Queralt A, Merkurjev D et al. Chromatin establishes an immature version of neuronal protocadherin selection during the naive-to-primed conversion of pluripotent stem cells. Nat Genet 2019-01-12 [PMID: 31740836] (Chemotaxis, Mouse)

Srivas S, Thakur MK. Transcriptional co-repressor SIN3A silencing rescues decline in memory consolidation during scopolamine-induced amnesia. J Neurochem 2018-05-01 [PMID: 29494759] (Mouse)

Siddiqui S, Lustig A, Carter A et al. Genomic deletion of GIT2 induces a premature age-related thymic dysfunction and systemic immune system disruption. Aging (Albany NY). 2017-03-04 [PMID: 28260693] (FLOW, Mouse)

Rahmanto YS, Jung JG, Wu RC, Kobayashi Y. Inactivating ARID1A Tumor Suppressor Enhances TERT Transcription and Maintains Telomere Length in Cancer Cells. Journal of Biological Chemistry. 2016-03-07 [PMID: 26953344] (Chemotaxis, Human)

Feng D, Sangster-Guity N, Stone R et al. Differential requirement of histone acetylase and deacetylase activities for IRF5-mediated proinflammatory cytokine expression. J Immunol. 2010-11-15 [PMID: 20935208]



Novus Biologicals USA

10730 E. Briarwood Avenue
Centennial, CO 80112
USA
Phone: 303.730.1950
Toll Free: 1.888.506.6887
Fax: 303.730.1966
nb-customerservice@bio-techne.com

Bio-Techne Canada

21 Canmotor Ave
Toronto, ON M8Z 4E6
Canada
Phone: 905.827.6400
Toll Free: 855.668.8722
Fax: 905.827.6402
canada.inquires@bio-techne.com

Bio-Techne Ltd

19 Barton Lane
Abingdon Science Park
Abingdon, OX14 3NB, United Kingdom
Phone: (44) (0) 1235 529449
Free Phone: 0800 37 34 15
Fax: (44) (0) 1235 533420
info.EMEA@bio-techne.com

General Contact Information

www.novusbio.com
Technical Support: nb-technical@bio-techne.com
Orders: nb-customerservice@bio-techne.com
General: novus@novusbio.com

Products Related to NB600-1263-100ug

| | |
|---------------|-----------------------------------------------------|
| HAF008 | Goat anti-Rabbit IgG Secondary Antibody [HRP] |
| NB7160 | Goat anti-Rabbit IgG (H+L) Secondary Antibody [HRP] |
| NBP2-24891 | Rabbit IgG Isotype Control |
| NBP2-38949PEP | SIN3A Recombinant Protein Antigen |

Limitations

This product is for research use only and is not approved for use in humans or in clinical diagnosis. Primary Antibodies are guaranteed for 1 year from date of receipt.

For more information on our 100% guarantee, please visit www.novusbio.com/guarantee

Earn gift cards/discounts by submitting a review: www.novusbio.com/reviews/submit/NB600-1263

Earn gift cards/discounts by submitting a publication using this product:
www.novusbio.com/publications

