

Product Datasheet

Complement C3d Antibody (053A-1149.3.1.4 (1003)) - BSA Free NB100-65510-0.1ml

Unit Size: 0.1 ml

Store at 4C short term. Aliquot and store at -20C long term. Avoid freeze-thaw cycles.

www.novusbio.com



technical@novusbio.com

Reviews: 1

Protocols, Publications, Related Products, Reviews, Research Tools and Images at:
www.novusbio.com/NB100-65510

Updated 2/21/2025 v.20.1

Earn rewards for product reviews and publications.

Submit a publication at www.novusbio.com/publications

Submit a review at www.novusbio.com/reviews/destination/NB100-65510



NB100-65510-0.1ml

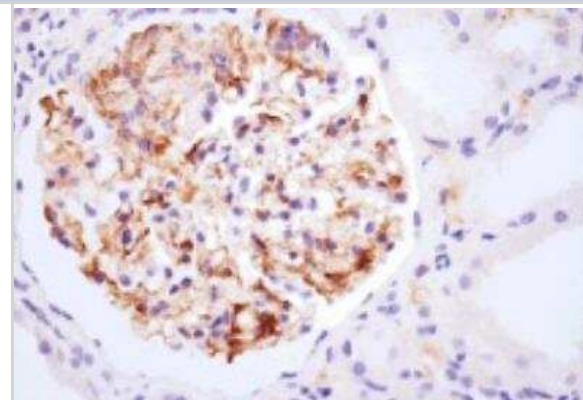
Complement C3d Antibody (053A-1149.3.1.4 (1003)) - BSA Free

Product Information	
Unit Size	0.1 ml
Concentration	Please see the vial label for concentration. If unlisted please contact technical services.
Storage	Store at 4C short term. Aliquot and store at -20C long term. Avoid freeze-thaw cycles.
Clonality	Monoclonal
Clone	053A-1149.3.1.4 (1003)
Preservative	0.1% Sodium Azide
Isotype	IgG1
Purity	Protein A purified
Buffer	Borate buffered saline (pH 8.4)
Product Description	
Host	Mouse
Gene ID	718
Gene Symbol	C3
Species	Human
Specificity/Sensitivity	NB100-65510 is specific for human complement component 3d (C3d), a 33kDa polypeptide fragment generated over the course of complement activation where complement 3 (C3) convertases cleave C3 to C3b, which is further degraded into iC3b and C3dg/C3d. C3d is involved in the regulation of many aspects of the immune response, including antigen processing and presentation. The C3d/antigen complex mediates B cell activation by simultaneously binding antigen-specific surface bound immunoglobulin and CD21, lowering the complement activation threshold. C3 is crucial in the induction of tolerance generated when an antigen is introduced into immunoprivileged sites and this is exploited by pathogens and cancer cells to evade the immune system by inhibiting complement activation.
Immunogen	Purified C3d from human plasma
Product Application Details	
Applications	Western Blot, ELISA, Flow Cytometry, Immunohistochemistry, Immunohistochemistry-Frozen
Recommended Dilutions	Western Blot 1:100-1:2000, Flow Cytometry 1:10-1:1000, ELISA 1:100-1:2000, Immunohistochemistry 1:10-1:500, Immunohistochemistry-Frozen 1:10-1:500



Images

Immunohistochemistry-Paraffin: Complement C3d Antibody (053A-1149.3.1.4) [NB100-65510] - Immunohistochemistry staining for C3d in human renal biopsy. IHC-P image submitted by a verified customer review.





Novus Biologicals USA

10730 E. Briarwood Avenue
Centennial, CO 80112
USA
Phone: 303.730.1950
Toll Free: 1.888.506.6887
Fax: 303.730.1966
nb-customerservice@bio-techne.com

Bio-Techne Canada

21 Canmotor Ave
Toronto, ON M8Z 4E6
Canada
Phone: 905.827.6400
Toll Free: 855.668.8722
Fax: 905.827.6402
canada.inquires@bio-techne.com

Bio-Techne Ltd

19 Barton Lane
Abingdon Science Park
Abingdon, OX14 3NB, United Kingdom
Phone: (44) (0) 1235 529449
Free Phone: 0800 37 34 15
Fax: (44) (0) 1235 533420
info.EMEA@bio-techne.com

General Contact Information

www.novusbio.com
Technical Support: nb-technical@bio-techne.com
Orders: nb-customerservice@bio-techne.com
General: novus@novusbio.com

Products Related to NB100-65510-0.1ml

HAF007	Goat anti-Mouse IgG Secondary Antibody [HRP]
NB720-B	Rabbit anti-Mouse IgG (H+L) Secondary Antibody [Biotin]
NBP1-97005-0.5mg	Mouse IgG1 Isotype Control (MG1)
NB100-65510APC-0.1ml	Complement C3d Antibody (053A-1149.3.1.4 (1003)) [Allophycocyanin]

Limitations

This product is for research use only and is not approved for use in humans or in clinical diagnosis. Primary Antibodies are guaranteed for 1 year from date of receipt.

For more information on our 100% guarantee, please visit www.novusbio.com/guarantee

Earn gift cards/discounts by submitting a review: www.novusbio.com/reviews/submit/NB100-65510

Earn gift cards/discounts by submitting a publication using this product:
www.novusbio.com/publications

