

# Product Datasheet

## Mouse Memory CD4+ T Cell Isolation Kit MAGM206-NOV

Unit Size: 1 Kit

Store at 4C. Do not freeze.

[www.novusbio.com](http://www.novusbio.com)



[technical@novusbio.com](mailto:technical@novusbio.com)

Protocols, Publications, Related Products, Reviews, Research Tools and Images at:  
[www.novusbio.com/MAGM206-NOV](http://www.novusbio.com/MAGM206-NOV)

Updated 1/3/2022 v.20.1

Earn rewards for product  
reviews and publications.

Submit a publication at [www.novusbio.com/publications](http://www.novusbio.com/publications)

Submit a review at [www.novusbio.com/reviews/destination/MAGM206-NOV](http://www.novusbio.com/reviews/destination/MAGM206-NOV)



**MAGM206-NOV****Mouse Memory CD4+ T Cell Isolation Kit****Product Information**

|                      |  |
|----------------------|--|
| <b>Unit Size</b>     | 1 Kit  |
| <b>Concentration</b> | Concentration is not relevant for this product. Please see the protocols for proper use of this product. |
| <b>Storage</b>       | Store at 4C. Do not freeze.  |

**Product Description**

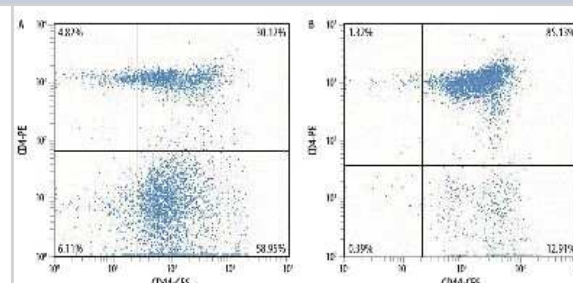
|                       |   |
|-----------------------|---|
| <b>Description</b>    | The MagCelect Mouse Memory CD4+ T Cell Isolation Kit is designed to isolate Memory CD4+ T cells by negative selection. The resulting cell preparation is highly enriched with Memory CD4+ T cells (CD3+/CD4+/CD62L- /CD44 <sup>high</sup> ). Typical recoveries range from 5-35% and the purity of recovered cells is >75%. |
| <b>Gene Symbol</b>    | CD4   |
| <b>Species</b>        | Mouse   |
| <b>Kit Components</b> | 1.0 ml of a Mouse Memory CD4+ T Cell Biotinylated Antibody Cocktail, 1.25 ml of a Streptavidin Ferrofluid, 10 ml of a 10X Buffer  |

**Product Application Details**

|                              |                |
|------------------------------|----------------|
| <b>Applications</b>          | Flow Cytometry |
| <b>Recommended Dilutions</b> | Flow Cytometry |

**Images**

Flow Cytometry: Mouse Memory CD4+ T Cell Isolation Kit [MAGM206-NOV] - Mouse splenocytes before (A) and after (B) isolation of Memory CD4+ T cells using the MagCelect . Dot plots reflect double staining of all viable cells with CD44-CFS and CD4-PE





### **Novus Biologicals USA**

10730 E. Briarwood Avenue  
Centennial, CO 80112  
USA  
Phone: 303.730.1950  
Toll Free: 1.888.506.6887  
Fax: 303.730.1966  
novus@novusbio.com

### **Bio-Techne Canada**

21 Canmotor Ave  
Toronto, ON M8Z 4E6  
Canada  
Phone: 905.827.6400  
Toll Free: 855.668.8722  
Fax: 905.827.6402  
canada.inquires@bio-techne.com

### **Bio-Techne Ltd**

19 Barton Lane  
Abingdon Science Park  
Abingdon, OX14 3NB, United Kingdom  
Phone: (44) (0) 1235 529449  
Free Phone: 0800 37 34 15  
Fax: (44) (0) 1235 533420  
info.EMEA@bio-techne.com

### **General Contact Information**

www.novusbio.com  
Technical Support: technical@novusbio.com  
Orders: orders@novusbio.com  
General: novus@novusbio.com

### **Limitations**

This product is for research use only and is not approved for use in humans or in clinical diagnosis. Kits are guaranteed for 6 months from date of receipt.

For more information on our 100% guarantee, please visit [www.novusbio.com/guarantee](http://www.novusbio.com/guarantee)

Earn gift cards/discounts by submitting a review: [www.novusbio.com/reviews/submit/MAGM206-NOV](http://www.novusbio.com/reviews/submit/MAGM206-NOV)

Earn gift cards/discounts by submitting a publication using this product:  
[www.novusbio.com/publications](http://www.novusbio.com/publications)

