

Product Datasheet

CD24- CD44+ Breast Cancer Stem Cell Isolation Kit MAGH111-NOV

Unit Size: 1 Kit

Store at 4C. Do not freeze.

www.novusbio.com



technical@novusbio.com

Protocols, Publications, Related Products, Reviews, Research Tools and Images at:
www.novusbio.com/MAGH111-NOV

Updated 9/11/2023 v.20.1

Earn rewards for product
reviews and publications.

Submit a publication at www.novusbio.com/publications

Submit a review at www.novusbio.com/reviews/destination/MAGH111-NOV



MAGH111-NOV**CD24- CD44+ Breast Cancer Stem Cell Isolation Kit****Product Information**

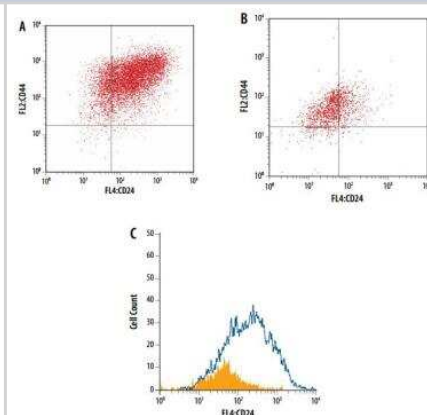
Unit Size	1 Kit
Concentration	Concentration is not relevant for this product. Please see the protocols for proper use of this product.
Storage	Store at 4C. Do not freeze.

Product Description

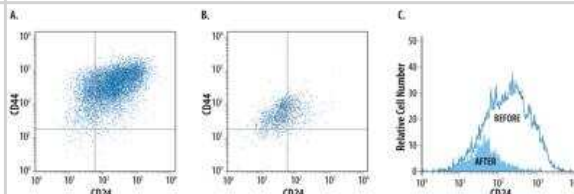
Description	<p>The MagCelect Human CD24- CD44+ Breast Cancer Stem Cells Isolation Kit is designed to isolate putative human breast cancer stem cells via a positive selection principle. The resulting cell preparation is highly enriched for CD24low/-CD44+ cells. Purity of recovered CD24low/-CD44+ cells varies depending on the preparation. Features</p> <ul style="list-style-type: none"> Isolation by positive and negative selection improves purity of recovered cells Isolation based on two markers increases the purity of recovered cells Includes antibodies for analysis of the final cell population purity
Species	Human
Kit Components	0.5 ml of a Human CD24 Biotinylated Antibody, 0.2 ml of a Human CD44 Biotinylated Antibody, 0.2 ml of a Human CD24 Detection Antibody, 0.2 ml of a Human CD44 Detection Antibody, 2.0 ml of a Streptavidin Ferrofluid, 2 vials of a Plus Buffer (10X)

Images

Flow Cytometry: CD24- CD44+ Breast Cancer Stem Cell Isolation Kit [MAGH111-NOV] - A small CD24low/-CD44+ population (A, upper-left quadrant) was isolated using this MagCelect Human Breast Cancer Stem Cells Isolation Kit (B). A histogram profiling the enrichment of CD24low/-CD44+ cells (shaded histogram) is shown (C)



Flow Cytometry: CD24- CD44+ Breast Cancer Stem Cell Isolation Kit [MAGH111-NOV] - A small population of CD24 low /- CD44+ cells was isolated from MCF-7 human breast adenocarcinoma cells using the MagCelect. CD24 low /- CD44+ cells (upper left quadrant), before (A) and after (B) enrichment, were detected by double-staining with APC-conjugated Mouse Anti-Human CD24 and PE-conjugated Mouse Anti-Human CD44 Detection Antibodies (both provided in the kit). A histogram profiling the enrichment of CD24 low/- cells (filled histogram) from the original cell population (open histogram) is shown (C).





Novus Biologicals USA

10730 E. Briarwood Avenue
Centennial, CO 80112
USA
Phone: 303.730.1950
Toll Free: 1.888.506.6887
Fax: 303.730.1966
novus@novusbio.com

Bio-Techne Canada

21 Canmotor Ave
Toronto, ON M8Z 4E6
Canada
Phone: 905.827.6400
Toll Free: 855.668.8722
Fax: 905.827.6402
canada.inquires@bio-techne.com

Bio-Techne Ltd

19 Barton Lane
Abingdon Science Park
Abingdon, OX14 3NB, United Kingdom
Phone: (44) (0) 1235 529449
Free Phone: 0800 37 34 15
Fax: (44) (0) 1235 533420
info.EMEA@bio-techne.com

General Contact Information

www.novusbio.com
Technical Support: technical@novusbio.com
Orders: orders@novusbio.com
General: novus@novusbio.com

Limitations

This product is for research use only and is not approved for use in humans or in clinical diagnosis. Kits are guaranteed for 6 months from date of receipt.

For more information on our 100% guarantee, please visit www.novusbio.com/guarantee

Earn gift cards/discounts by submitting a review: www.novusbio.com/reviews/submit/MAGH111-NOV

Earn gift cards/discounts by submitting a publication using this product:
www.novusbio.com/publications

