

Product Datasheet

SUSD2 Antibody (1279C) - Azide and BSA Free MAB90565

Unit Size: 100 ug

Store at -20C. Avoid freeze-thaw cycles.

www.novusbio.com



technical@novusbio.com

Protocols, Publications, Related Products, Reviews, Research Tools and Images at:
www.novusbio.com/MAB90565

Updated 10/23/2024 v.20.1

Earn rewards for product
reviews and publications.

Submit a publication at www.novusbio.com/publications

Submit a review at www.novusbio.com/reviews/destination/MAB90565



MAB90565

SUSD2 Antibody (1279C) - Azide and BSA Free

Product Information	
Unit Size	100 ug
Concentration	1.0 mg/ml
Storage	Store at -20C. Avoid freeze-thaw cycles.
Clonality	Monoclonal
Clone	1279C
Preservative	No Preservative
Isotype	IgG
Purity	Protein A or G purified
Buffer	PBS

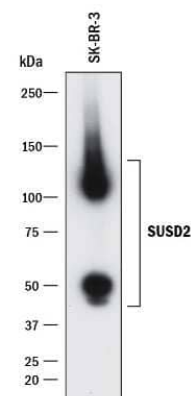
Product Description	
Description	>90% by SDS PAGE
Host	Rabbit
Gene ID	56241
Gene Symbol	SUSD2
Species	Human
Immunogen	Partial recombinant human SUSD2 protein (amino acids 1-785) [UniProt Q9UGT4]

Product Application Details	
Applications	Western Blot, Flow Cytometry, Immunohistochemistry, CyTOF-ready
Recommended Dilutions	Western Blot, Flow Cytometry, Immunohistochemistry, CyTOF-ready
Application Notes	This antibody is Cytof ready.

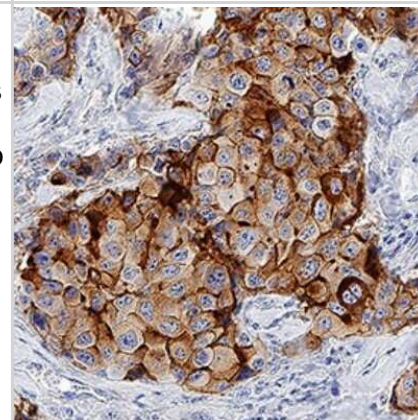


Images

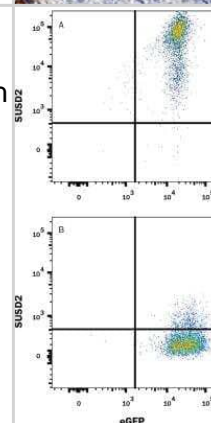
Western Blot: SUSD2 Antibody (1279C) [MAB90565] - Analysis of SK-BR-3 cell lysate with 0.5 ug/ml of hSUSD2 Monoclonal Antibody followed by HRP-conjugated Anti-Rabbit IgG Antibody. A specific band was detected for hSUSD2 at approximately 110, 50 kDa (as indicated). This experiment was conducted under reducing conditions and using Immunoblot Buffer Group 1.



Immunohistochemistry: SUSD2 Antibody (1279C) [MAB90565] - SUSD2 was detected in immersion fixed paraffin-embedded sections of human breast cancer using SUSD2 Monoclonal Antibody at 3 ug/ml. Tissue was stained using Rabbit IgG VisUCyte HRP Polymer Antibody (brown) and counterstained with hematoxylin (blue). Specific staining was localized to plasmam membrane in cancer cells.



Flow Cytometry: SUSD2 Antibody (1279C) - Azide Free [MAB90565] - HEK293 human embryonic kidney cell line transfected with either (A) human SUSD2 or (B) irrelevant transfectants and eGFP was stained with Rabbit Anti-Human/Rat SUSD2 Monoclonal Antibody (Catalog # MAB90565) followed by Allophycocyanin-conjugated Anti-Rabbit IgG Secondary Antibody (Catalog # F0111). Quadrant markers were set based on control antibody staining (Catalog # AB-105-C).





Novus Biologicals USA

10730 E. Briarwood Avenue
Centennial, CO 80112
USA
Phone: 303.730.1950
Toll Free: 1.888.506.6887
Fax: 303.730.1966
nb-customerservice@bio-techne.com

Bio-Techne Canada

21 Canmotor Ave
Toronto, ON M8Z 4E6
Canada
Phone: 905.827.6400
Toll Free: 855.668.8722
Fax: 905.827.6402
canada.inquires@bio-techne.com

Bio-Techne Ltd

19 Barton Lane
Abingdon Science Park
Abingdon, OX14 3NB, United Kingdom
Phone: (44) (0) 1235 529449
Free Phone: 0800 37 34 15
Fax: (44) (0) 1235 533420
info.EMEA@bio-techne.com

General Contact Information

www.novusbio.com
Technical Support: nb-technical@bio-techne.com
Orders: nb-customerservice@bio-techne.com
General: novus@novusbio.com

Products Related to MAB90565

HAF008	Goat anti-Rabbit IgG Secondary Antibody [HRP]
NB7160	Goat anti-Rabbit IgG (H+L) Secondary Antibody [HRP]
NBP2-24891	Rabbit IgG Isotype Control
NBP1-88589PEP	SUSD2 Recombinant Protein Antigen

Limitations

This product is for research use only and is not approved for use in humans or in clinical diagnosis. Primary Antibodies are guaranteed for 1 year from date of receipt.

For more information on our 100% guarantee, please visit www.novusbio.com/guarantee

Earn gift cards/discounts by submitting a review: www.novusbio.com/reviews/submit/MAB90565

Earn gift cards/discounts by submitting a publication using this product:
www.novusbio.com/publications

