

Product Datasheet

EFL-1 Antibody **44960002-0.1mg**

Unit Size: 0.1 mg

Store at 4C short term. Aliquot and store at -20C long term. Avoid freeze-thaw cycles.

www.novusbio.com



technical@novusbio.com

Reviews: 1 Publications: 1

Protocols, Publications, Related Products, Reviews, Research Tools and Images at:
www.novusbio.com/44960002

Updated 4/14/2021 v.20.1

**Earn rewards for product
reviews and publications.**

Submit a publication at www.novusbio.com/publications

Submit a review at www.novusbio.com/reviews/destination/44960002



44960002-0.1mg

EFL-1 Antibody

Product Information

| | |
|----------------------|--|
| Unit Size | 0.1 mg |
| Concentration | 1 mg/ml |
| Storage | Store at 4C short term. Aliquot and store at -20C long term. Avoid freeze-thaw cycles. |
| Clonality | Polyclonal |
| Preservative | No Preservative |
| Isotype | IgG |
| Purity | Immunogen affinity purified |
| Buffer | 20mM Potassium Phosphate (pH 7.0) and 0.15M NaCl |

Product Description

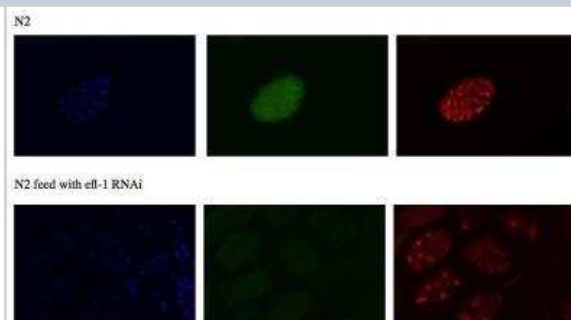
| | |
|-------------------------|---|
| Host | Rabbit |
| Gene ID | 180133 |
| Species | C. elegans |
| Reactivity Notes | Caenorhabditis elegans |
| Immunogen | In vivo generated recombinant protein fragment |
| Notes | This product was created from the ModEncode Project, a part of the NHGRI, and is sold by SDIX and Novus Biologicals. These C. elegans antibodies were generated in the labs of Jason Lieb, Susan Strome, Julie Ahringer, Arshad Desai, and Abby Dernburg. |

Product Application Details

| | |
|------------------------------|--|
| Applications | Chromatin Immunoprecipitation, ELISA, Immunocytochemistry/Immunofluorescence |
| Recommended Dilutions | Chromatin Immunoprecipitation 1:10-1:500, ELISA 1:100-1:2000, Immunocytochemistry/Immunofluorescence 1:10-1:2000 |
| Application Notes | This antibody is useful in Chromatin Immunoprecipitation, ELISA and Immunofluorescence. |

Images

Immunocytochemistry/Immunofluorescence: EFL-1 Antibody [44960002]
 - This image is specific to animal number SDQ3590 MeOH fixation.
 Dilution 1:500

**Publications**

Kudron M, Niu W, Lu Z et al. Tissue-specific direct targets of Caenorhabditis elegans Rb/E2F dictate distinct somatic and germline programs. Genome Biol. 2013-01-23 [PMID: 23347407] (Chemotaxis, C. elegans)





Novus Biologicals USA

10730 E. Briarwood Avenue
Centennial, CO 80112
USA
Phone: 303.730.1950
Toll Free: 1.888.506.6887
Fax: 303.730.1966
novus@novusbio.com

Bio-Techne Canada

21 Canmotor Ave
Toronto, ON M8Z 4E6
Canada
Phone: 905.827.6400
Toll Free: 855.668.8722
Fax: 905.827.6402
canada.inquires@bio-techne.com

Bio-Techne Ltd

19 Barton Lane
Abingdon Science Park
Abingdon, OX14 3NB, United Kingdom
Phone: (44) (0) 1235 529449
Free Phone: 0800 37 34 15
Fax: (44) (0) 1235 533420
info.EMEA@bio-techne.com

General Contact Information

www.novusbio.com
Technical Support: technical@novusbio.com
Orders: orders@novusbio.com
General: novus@novusbio.com

Limitations

This product is for research use only and is not approved for use in humans or in clinical diagnosis. Primary Antibodies are guaranteed for 1 year from date of receipt.

For more information on our 100% guarantee, please visit www.novusbio.com/guarantee

Earn gift cards/discounts by submitting a review: www.novusbio.com/reviews/submit/44960002

Earn gift cards/discounts by submitting a publication using this product:
www.novusbio.com/publications

