

# Product Datasheet

## LIN-13 Antibody 41910002-0.1mg

Unit Size: 0.1 mg

Store at 4C short term. Aliquot and store at -20C long term. Avoid freeze-thaw cycles.

[www.novusbio.com](http://www.novusbio.com)



[technical@novusbio.com](mailto:technical@novusbio.com)

Protocols, Publications, Related Products, Reviews, Research Tools and Images at:  
[www.novusbio.com/41910002](http://www.novusbio.com/41910002)

Updated 4/3/2021 v.20.1

Earn rewards for product  
reviews and publications.

Submit a publication at [www.novusbio.com/publications](http://www.novusbio.com/publications)

Submit a review at [www.novusbio.com/reviews/destination/41910002](http://www.novusbio.com/reviews/destination/41910002)



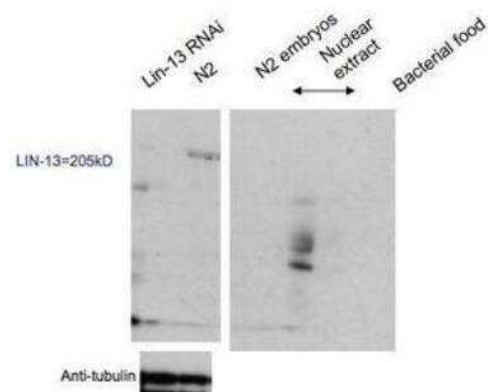
**41910002-0.1mg****LIN-13 Antibody**

<b>Product Information</b>	
<b>Unit Size</b>	0.1 mg
<b>Concentration</b>	1 mg/ml
<b>Storage</b>	Store at 4C short term. Aliquot and store at -20C long term. Avoid freeze-thaw cycles.
<b>Clonality</b>	Polyclonal
<b>Preservative</b>	No Preservative
<b>Isotype</b>	IgG
<b>Purity</b>	Immunogen affinity purified
<b>Buffer</b>	20mM Potassium Phosphate (pH 7.0) and 0.15M NaCl
<b>Product Description</b>	
<b>Host</b>	Rabbit
<b>Gene Symbol</b>	LIN13
<b>Species</b>	C. elegans
<b>Reactivity Notes</b>	Caenorhabditis elegans
<b>Specificity/Sensitivity</b>	Caenorhabditis elegans LIN-13
<b>Immunogen</b>	In vivo generated recombinant protein fragment
<b>Notes</b>	This product was created from the ModEncode Project, a part of the NHGRI, and is sold by SDIX and Novus Biologicals. These C. elegans antibodies were generated in the labs of Jason Lieb, Susan Strome, Julie Ahringer, Arshad Desai, and Abby Dernburg.
<b>Product Application Details</b>	
<b>Applications</b>	Western Blot, ELISA, Immunocytochemistry/ Immunofluorescence, Immunohistochemistry
<b>Recommended Dilutions</b>	Western Blot 1:2000-1:10000, ELISA 1:100-1:2000, Immunohistochemistry 1:250-1:2000, Immunocytochemistry/ Immunofluorescence 1:10-1:500
<b>Application Notes</b>	This antibody works in ELISA, Immunohistochemistry, Immunofluorescence (animal number SDQ2944 only) and Western Blot.

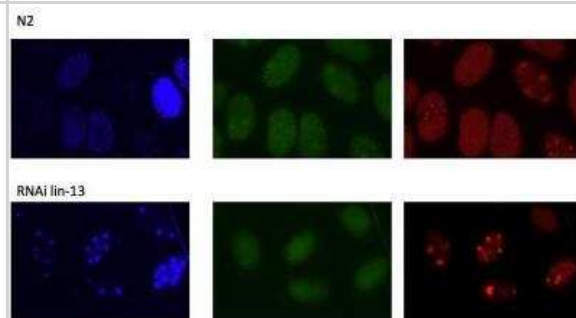


## Images

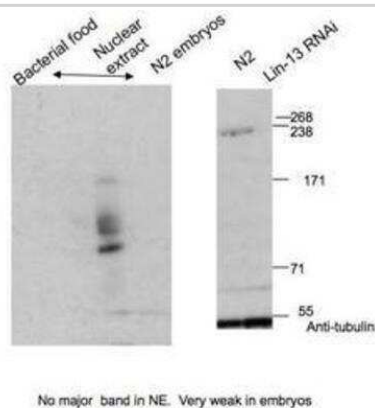
Western Blot: LIN-13 Antibody [41910002] This image is specific to animal number SDQ2970 Dilution: 1:1000 Very weak. ON expo



Immunocytochemistry/Immunofluorescence: LIN-13 Antibody [41910002]  
- This image is specific for animal number SDQ2944 Dilution: 1:3000



Western Blot: LIN-13 Antibody [41910002] - This image is specific for animal number SDQ2944 Dilution: 1:1000





### **Novus Biologicals USA**

10730 E. Briarwood Avenue  
Centennial, CO 80112  
USA  
Phone: 303.730.1950  
Toll Free: 1.888.506.6887  
Fax: 303.730.1966  
nb-customerservice@bio-techne.com

### **Bio-Techne Canada**

21 Canmotor Ave  
Toronto, ON M8Z 4E6  
Canada  
Phone: 905.827.6400  
Toll Free: 855.668.8722  
Fax: 905.827.6402  
canada.inquires@bio-techne.com

### **Bio-Techne Ltd**

19 Barton Lane  
Abingdon Science Park  
Abingdon, OX14 3NB, United Kingdom  
Phone: (44) (0) 1235 529449  
Free Phone: 0800 37 34 15  
Fax: (44) (0) 1235 533420  
info.EMEA@bio-techne.com

### **General Contact Information**

[www.novusbio.com](http://www.novusbio.com)  
Technical Support: nb-technical@bio-techne.com  
Orders: nb-customerservice@bio-techne.com  
General: novus@novusbio.com

### **Limitations**

This product is for research use only and is not approved for use in humans or in clinical diagnosis. Primary Antibodies are guaranteed for 1 year from date of receipt.

For more information on our 100% guarantee, please visit [www.novusbio.com/guarantee](http://www.novusbio.com/guarantee)

Earn gift cards/discounts by submitting a review: [www.novusbio.com/reviews/submit/41910002](http://www.novusbio.com/reviews/submit/41910002)

Earn gift cards/discounts by submitting a publication using this product:  
[www.novusbio.com/publications](http://www.novusbio.com/publications)

