

# Product Datasheet

## LIN-15B Antibody 38610002-0.1mg

Unit Size: 0.1 mg

Store at 4C short term. Aliquot and store at -20C long term. Avoid freeze-thaw cycles.

[www.novusbio.com](http://www.novusbio.com)



[technical@novusbio.com](mailto:technical@novusbio.com)

### Publications: 2

Protocols, Publications, Related Products, Reviews, Research Tools and Images at:  
[www.novusbio.com/38610002](http://www.novusbio.com/38610002)

Updated 10/13/2020 v.20.1

Earn rewards for product  
reviews and publications.

Submit a publication at [www.novusbio.com/publications](http://www.novusbio.com/publications)

Submit a review at [www.novusbio.com/reviews/destination/38610002](http://www.novusbio.com/reviews/destination/38610002)



**38610002-0.1mg**

LIN-15B Antibody

Product Information	
Unit Size	0.1 mg
Concentration	Please see the vial label for concentration. If unlisted please contact technical services.
Storage	Store at 4C short term. Aliquot and store at -20C long term. Avoid freeze-thaw cycles.
Clonality	Polyclonal
Preservative	No Preservative
Isotype	IgG
Purity	Immunogen affinity purified
Buffer	20mM Potassium Phosphate (pH 7.0) and 0.15M NaCl

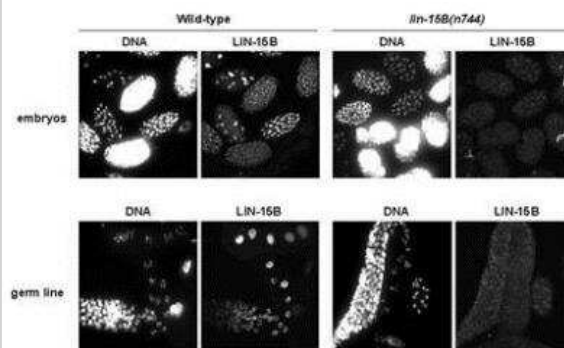
Product Description	
Host	Rabbit
Gene Symbol	LIN15B
Species	C. elegans
Reactivity Notes	C. elegans
Specificity/Sensitivity	This antibody is specific to C. elegans LIN15B
Immunogen	In vivo generated recombinant protein fragment
Notes	This product was created from the ModEncode Project, a part of the NHGRI, and is sold by SDIX and Novus Biologicals. These C. elegans antibodies were generated in the labs of Jason Lieb, Susan Strome, Julie Ahringer, Arshad Desai, and Abby Dernburg.

Product Application Details	
Applications	Chromatin Immunoprecipitation, ELISA, Immunocytochemistry/ Immunofluorescence
Recommended Dilutions	Chromatin Immunoprecipitation 1:10-1:500, ELISA 1:100-1:2000, Immunocytochemistry/ Immunofluorescence 1:10-1:2000
Application Notes	This antibody is useful in Chromatin Immunoprecipitation, ELISA and Immunofluorescence.

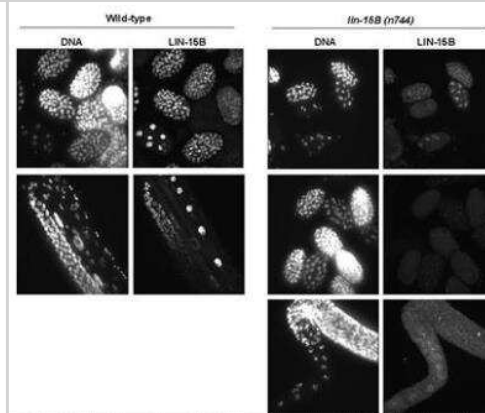


## Images

Immunocytochemistry/Immunofluorescence: LIN-15B Antibody [38610002] - This image is specific to animal number SDQ2330 1:10,000 of 0.5 mg/ml stock



Immunocytochemistry/Immunofluorescence: LIN-15B Antibody [38610002] - This image is specific to animal number SDQ2327 1:10,000 of 0.5 mg/ml stock



## Publications

Garrison C, Lastwika K, Zhang Y et al. Proteomic Analysis, Immune Dysregulation, and Pathway Interconnections With Obesity J Proteome Res. 2017-01-06 [PMID: 27769113] (MiAr)

### Details:

Analysis is performed on plasma proteomic data to identify how obesity can alter pathways and to highlight the risk factor for disease in subjects with a high body mass index.

Rho JH, Lampe PD. High-throughput screening for native autoantigen-autoantibody complexes using antibody microarrays J Proteome Res. 2013-05-03 [PMID: 23541305] (MiAr)

### Details:

A novel method using antibody microarrays is used to detect autoantibody-antigen complexes that can potentially be useful for detection and characterization of diseases.



### **Novus Biologicals USA**

10730 E. Briarwood Avenue  
Centennial, CO 80112  
USA  
Phone: 303.730.1950  
Toll Free: 1.888.506.6887  
Fax: 303.730.1966  
nb-customerservice@bio-techne.com

### **Bio-Techne Canada**

21 Canmotor Ave  
Toronto, ON M8Z 4E6  
Canada  
Phone: 905.827.6400  
Toll Free: 855.668.8722  
Fax: 905.827.6402  
canada.inquires@bio-techne.com

### **Bio-Techne Ltd**

19 Barton Lane  
Abingdon Science Park  
Abingdon, OX14 3NB, United Kingdom  
Phone: (44) (0) 1235 529449  
Free Phone: 0800 37 34 15  
Fax: (44) (0) 1235 533420  
info.EMEA@bio-techne.com

### **General Contact Information**

www.novusbio.com  
Technical Support: nb-technical@bio-techne.com  
Orders: nb-customerservice@bio-techne.com  
General: novus@novusbio.com

### **Limitations**

This product is for research use only and is not approved for use in humans or in clinical diagnosis. Primary Antibodies are guaranteed for 1 year from date of receipt.

For more information on our 100% guarantee, please visit [www.novusbio.com/guarantee](http://www.novusbio.com/guarantee)

Earn gift cards/discounts by submitting a review: [www.novusbio.com/reviews/submit/38610002](http://www.novusbio.com/reviews/submit/38610002)

Earn gift cards/discounts by submitting a publication using this product:  
[www.novusbio.com/publications](http://www.novusbio.com/publications)

