

# Product Datasheet

## CD25/IL-2R alpha Antibody

### 33380002-0.1mg

Unit Size: 0.1 mg

Store at 4C short term. Aliquot and store at -20C long term. Avoid freeze-thaw cycles.

[www.novusbio.com](http://www.novusbio.com)



[technical@novusbio.com](mailto:technical@novusbio.com)

**Reviews: 1 Publications: 2**

Protocols, Publications, Related Products, Reviews, Research Tools and Images at:  
[www.novusbio.com/33380002](http://www.novusbio.com/33380002)

Updated 4/14/2021 v.20.1

**Earn rewards for product reviews and publications.**

Submit a publication at [www.novusbio.com/publications](http://www.novusbio.com/publications)

Submit a review at [www.novusbio.com/reviews/destination/33380002](http://www.novusbio.com/reviews/destination/33380002)



**33380002-0.1mg**

CD25/IL-2R alpha Antibody

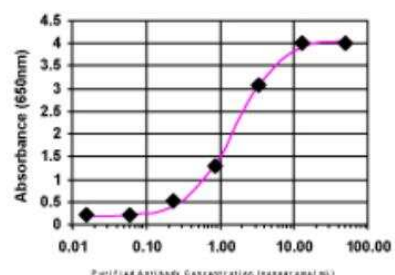
Product Information	
Unit Size	0.1 mg
Concentration	Please see the vial label for concentration. If unlisted please contact technical services.
Storage	Store at 4C short term. Aliquot and store at -20C long term. Avoid freeze-thaw cycles.
Clonality	Polyclonal
Preservative	No Preservative
Isotype	IgG
Purity	Immunogen affinity purified
Buffer	20 mM Potassium Phosphate (pH 7.0), 0.15 M NaCl

Product Description	
Host	Rabbit
Gene ID	3559
Gene Symbol	IL2RA
Species	Human
Immunogen	This antibody is specific for the Middle Region of the target protein.
Notes	Manufactured by SDIX's proprietary Genomic Antibody Technology™; GAT <a href="#">FAQs</a> .

Product Application Details	
Applications	ELISA
Recommended Dilutions	ELISA 1:100 - 1:2000

**Images**

ELISA: CD25/IL-2 R alpha Antibody [33380002]

**ELISA:**

The affinity purified antibody was serially diluted onto an ELISA plate coated with a recombinant protein fragment.

## Publications

Garrison C, Lastwika K, Zhang Y et al. Proteomic Analysis, Immune Dysregulation, and Pathway Interconnections With Obesity J Proteome Res. 2017-01-06 [PMID: 27769113] (MiAr)

### Details:

Analysis is performed on plasma proteomic data to identify how obesity can alter pathways and to highlight the risk factor for disease in subjects with a high body mass index.

Rho JH, Lampe PD. High-throughput screening for native autoantigen-autoantibody complexes using antibody microarrays J Proteome Res. 2013-05-03 [PMID: 23541305] (MiAr)

### Details:

A novel method using antibody microarrays is used to detect autoantibody-antigen complexes that can potentially be useful for detection and characterization of diseases.





### **Novus Biologicals USA**

10730 E. Briarwood Avenue  
Centennial, CO 80112  
USA

Phone: 303.730.1950  
Toll Free: 1.888.506.6887  
Fax: 303.730.1966  
novus@novusbio.com

### **Bio-Techne Canada**

21 Canmotor Ave  
Toronto, ON M8Z 4E6  
Canada

Phone: 905.827.6400  
Toll Free: 855.668.8722  
Fax: 905.827.6402  
canada.inquires@bio-techne.com

### **Bio-Techne Ltd**

19 Barton Lane  
Abingdon Science Park  
Abingdon, OX14 3NB, United Kingdom

Phone: (44) (0) 1235 529449  
Free Phone: 0800 37 34 15  
Fax: (44) (0) 1235 533420  
info.EMEA@bio-techne.com

### **General Contact Information**

www.novusbio.com  
Technical Support: technical@novusbio.com  
Orders: orders@novusbio.com  
General: novus@novusbio.com

### **Limitations**

This product is for research use only and is not approved for use in humans or in clinical diagnosis. Primary Antibodies are guaranteed for 1 year from date of receipt.

For more information on our 100% guarantee, please visit [www.novusbio.com/guarantee](http://www.novusbio.com/guarantee)

Earn gift cards/discounts by submitting a review: [www.novusbio.com/reviews/submit/33380002](http://www.novusbio.com/reviews/submit/33380002)

Earn gift cards/discounts by submitting a publication using this product:  
[www.novusbio.com/publications](http://www.novusbio.com/publications)

