

# Product Datasheet

## Myosin light chain kinase Antibody 32180002-0.1mg

Unit Size: 0.1 mg

Store at 4C short term. Aliquot and store at -20C long term. Avoid freeze-thaw cycles.

[www.novusbio.com](http://www.novusbio.com)



[technical@novusbio.com](mailto:technical@novusbio.com)

### Publications: 2

Protocols, Publications, Related Products, Reviews, Research Tools and Images at:  
[www.novusbio.com/32180002](http://www.novusbio.com/32180002)

Updated 4/3/2021 v.20.1

Earn rewards for product  
reviews and publications.

Submit a publication at [www.novusbio.com/publications](http://www.novusbio.com/publications)

Submit a review at [www.novusbio.com/reviews/destination/32180002](http://www.novusbio.com/reviews/destination/32180002)



**32180002-0.1mg****Myosin light chain kinase Antibody****Product Information**

|                      |   |
|----------------------|---|
| <b>Unit Size</b>     | 0.1 mg  |
| <b>Concentration</b> | Please see the vial label for concentration. If unlisted please contact technical services. |
| <b>Storage</b>       | Store at 4C short term. Aliquot and store at -20C long term. Avoid freeze-thaw cycles.      |
| <b>Clonality</b>     | Polyclonal  |
| <b>Preservative</b>  | No Preservative   |
| <b>Isotype</b>       | IgG   |
| <b>Purity</b>        | Immunogen affinity purified   |
| <b>Buffer</b>        | 20mM Potassium Phosphate (pH 7.0) and 0.15M NaCl  |

**Product Description**

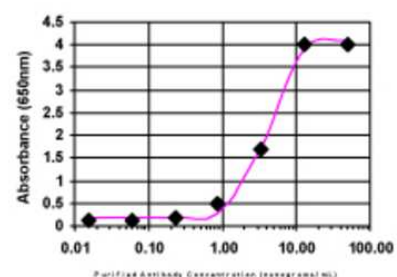
|                                |   |
|--------------------------------|---|
| <b>Host</b>                    | Rabbit  |
| <b>Gene ID</b>                 | 4638  |
| <b>Gene Symbol</b>             | MYLK  |
| <b>Species</b>                 | Human   |
| <b>Reactivity Notes</b>        | Human.  |
| <b>Specificity/Sensitivity</b> | This product is specific for Human MYLK.  |
| <b>Immunogen</b>               | This antibody is specific for the Middle Region of the target protein.                      |
| <b>Notes</b>                   | Manufactured by SDIX's proprietary Genomic Antibody Technology™. GAT <a href="#">FAQs</a> . |

**Product Application Details**

|                              |   |
|------------------------------|---|
| <b>Applications</b>          | ELISA, Immunohistochemistry, Immunohistochemistry-Paraffin  |
| <b>Recommended Dilutions</b> | ELISA 1:100-1:2000, Immunohistochemistry 1:10-1:500, Immunohistochemistry-Paraffin 1:10-1:500                             |
| <b>Application Notes</b>     | This product is useful in Immunohistochemistry-Paraffin and has been QC tested in ELISA against recombinant protein only. |

**Images**

ELISA: Myosin light chain kinase Antibody [32180002]

**ELISA:**

The affinity purified antibody was serially diluted onto an ELISA plate coated with a recombinant protein fragment.

## Publications

Garrison C, Lastwika K, Zhang Y et al. Proteomic Analysis, Immune Dysregulation, and Pathway Interconnections With Obesity J Proteome Res. 2017-01-06 [PMID: 27769113] (MiAr)

### Details:

Analysis is performed on plasma proteomic data to identify how obesity can alter pathways and to highlight the risk factor for disease in subjects with a high body mass index.

Rho JH, Lampe PD. High-throughput screening for native autoantigen-autoantibody complexes using antibody microarrays J Proteome Res. 2013-05-03 [PMID: 23541305] (MiAr)

### Details:

A novel method using antibody microarrays is used to detect autoantibody-antigen complexes that can potentially be useful for detection and characterization of diseases.





### **Novus Biologicals USA**

10730 E. Briarwood Avenue  
Centennial, CO 80112  
USA

Phone: 303.730.1950  
Toll Free: 1.888.506.6887  
Fax: 303.730.1966  
novus@novusbio.com

### **Bio-Techne Canada**

21 Canmotor Ave  
Toronto, ON M8Z 4E6  
Canada

Phone: 905.827.6400  
Toll Free: 855.668.8722  
Fax: 905.827.6402  
canada.inquires@bio-techne.com

### **Bio-Techne Ltd**

19 Barton Lane  
Abingdon Science Park  
Abingdon, OX14 3NB, United Kingdom  
Phone: (44) (0) 1235 529449  
Free Phone: 0800 37 34 15  
Fax: (44) (0) 1235 533420  
info.EMEA@bio-techne.com

### **General Contact Information**

www.novusbio.com  
Technical Support: technical@novusbio.com  
Orders: orders@novusbio.com  
General: novus@novusbio.com

### **Limitations**

This product is for research use only and is not approved for use in humans or in clinical diagnosis. Primary Antibodies are guaranteed for 1 year from date of receipt.

For more information on our 100% guarantee, please visit [www.novusbio.com/guarantee](http://www.novusbio.com/guarantee)

Earn gift cards/discounts by submitting a review: [www.novusbio.com/reviews/submit/32180002](http://www.novusbio.com/reviews/submit/32180002)

Earn gift cards/discounts by submitting a publication using this product:  
[www.novusbio.com/publications](http://www.novusbio.com/publications)

