

Product Datasheet

LIN-28A Antibody 32140002-0.1mg

Unit Size: 0.1 mg

Store at 4C short term. Aliquot and store at -20C long term. Avoid freeze-thaw cycles.

www.novusbio.com



technical@novusbio.com

Publications: 2

Protocols, Publications, Related Products, Reviews, Research Tools and Images at:
www.novusbio.com/32140002

Updated 4/3/2021 v.20.1

Earn rewards for product
reviews and publications.

Submit a publication at www.novusbio.com/publications

Submit a review at www.novusbio.com/reviews/destination/32140002



32140002-0.1mg

LIN-28A Antibody

Product Information	
Unit Size	0.1 mg
Concentration	Please see the vial label for concentration. If unlisted please contact technical services.
Storage	Store at 4C short term. Aliquot and store at -20C long term. Avoid freeze-thaw cycles.
Clonality	Polyclonal
Preservative	No Preservative
Isotype	IgG
Purity	Immunogen affinity purified
Buffer	20mM Potassium Phosphate (pH 7.0) and 0.15M NaCl

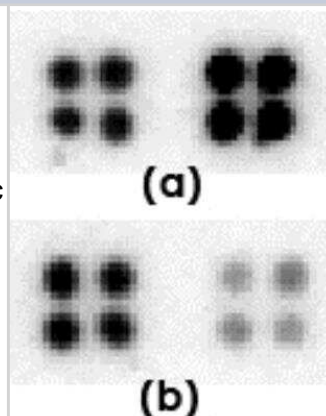
Product Description	
Host	Rabbit
Gene ID	79727
Gene Symbol	LIN28A
Species	Human, Mouse
Reactivity Notes	Human and mouse.
Marker	Undifferentiated human embryonic stem cell Marker
Specificity/Sensitivity	This product is specific for LIN28.
Immunogen	This antibody is specific for the C Terminus Region of the target protein.
Notes	Manufactured by SDIX's proprietary Genomic Antibody Technology [®] ; GAT FAQs .

Product Application Details	
Applications	Dot Blot, ELISA, Immunohistochemistry, Immunohistochemistry-Paraffin
Recommended Dilutions	ELISA 1:100-1:2000, Immunohistochemistry 1:10-1:500, Immunohistochemistry-Paraffin 1:10-1:500, Dot Blot 1:100-1:2000
Application Notes	This antibody is useful in Dot Blot, ELISA and Immunohistochemistry-Paraffin.

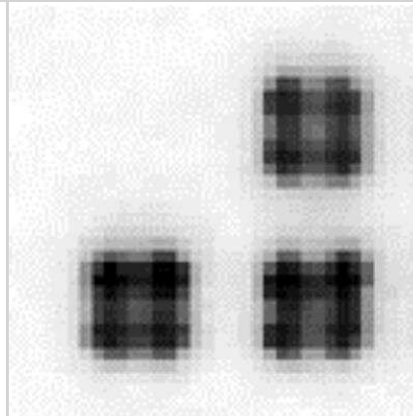


Images

Dot Blot: LIN-28A Antibody [32140002] - The anti-Lin28 antibody (right quadruplicate spots at each panel) or control antibody (left quadruplicate spots at each panel) were printed on membranes at 10 ng/spot. The membranes were incubated with biotinylated cell lysate (50 ug per membrane), followed by probing with streptavidin-HRP and CCD camera image acquisition. (a), Cell lysate from undifferentiated mouse embryonic stem cells; (b), Cell lysate from differentiated mouse embryonic stem cells. Data courtesy of a SDI customer.

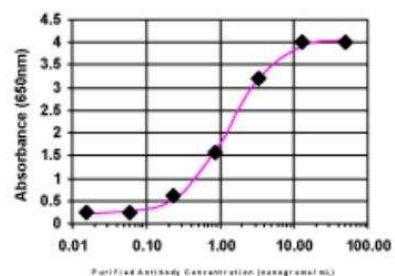


Dot Blot: LIN-28A Antibody [32140002] - Protein samples (upper left quadruplicate spots: bovine gamma globulin; upper right quadruplicate spots: cell lysate from 293 cell over expressing Nanog; below left quadruplicate spots: cell lysate from 293 cell over expressing Sox2; below right quadruplicate spots: cell lysate from 293 cell over expressing POU5F1) were printed on membranes at 10 ng/spot. The membrane was incubated with anti-Lin28 antibody (1:1000 dilution) and then probed anti-rabbit IgG-HRP. Signals were acquired with a CCD camera. Data courtesy of a SDI customer.



ELISA: LIN-28A Antibody [32140002]

ELISA:



The affinity purified antibody was serially diluted onto an ELISA plate coated with a recombinant protein fragment.

Publications

Garrison C, Lastwika K, Zhang Y et al. Proteomic Analysis, Immune Dysregulation, and Pathway Interconnections With Obesity J Proteome Res. 2017-01-06 [PMID: 27769113] (MiAr)

Details:

Analysis is performed on plasma proteomic data to identify how obesity can alter pathways and to highlight the risk factor for disease in subjects with a high body mass index.

Rho JH, Lampe PD. High-throughput screening for native autoantigen-autoantibody complexes using antibody microarrays J Proteome Res. 2013-05-03 [PMID: 23541305] (MiAr)

Details:

A novel method using antibody microarrays is used to detect autoantibody-antigen complexes that can potentially be useful for detection and characterization of diseases.



Novus Biologicals USA

10730 E. Briarwood Avenue
Centennial, CO 80112
USA
Phone: 303.730.1950
Toll Free: 1.888.506.6887
Fax: 303.730.1966
novus@novusbio.com

Bio-Techne Canada

21 Canmotor Ave
Toronto, ON M8Z 4E6
Canada
Phone: 905.827.6400
Toll Free: 855.668.8722
Fax: 905.827.6402
canada.inquires@bio-techne.com

Bio-Techne Ltd

19 Barton Lane
Abingdon Science Park
Abingdon, OX14 3NB, United Kingdom
Phone: (44) (0) 1235 529449
Free Phone: 0800 37 34 15
Fax: (44) (0) 1235 533420
info.EMEA@bio-techne.com

General Contact Information

www.novusbio.com
Technical Support: technical@novusbio.com
Orders: orders@novusbio.com
General: novus@novusbio.com

Limitations

This product is for research use only and is not approved for use in humans or in clinical diagnosis. Primary Antibodies are guaranteed for 1 year from date of receipt.

For more information on our 100% guarantee, please visit www.novusbio.com/guarantee

Earn gift cards/discounts by submitting a review: www.novusbio.com/reviews/submit/32140002

Earn gift cards/discounts by submitting a publication using this product:
www.novusbio.com/publications

