

Product Datasheet

Aldehyde Dehydrogenase 1-A1/ALDH1A1 Antibody 31160002-0.1mg

Unit Size: 0.1 mg

Store at 4C short term. Aliquot and store at -20C long term. Avoid freeze-thaw cycles.

www.novusbio.com



technical@novusbio.com

Publications: 3

Protocols, Publications, Related Products, Reviews, Research Tools and Images at:
www.novusbio.com/31160002

Updated 12/20/2023 v.20.1

Earn rewards for product
reviews and publications.

Submit a publication at www.novusbio.com/publications

Submit a review at www.novusbio.com/reviews/destination/31160002



31160002-0.1mg**Aldehyde Dehydrogenase 1-A1/ALDH1A1 Antibody**

Product Information	
Unit Size	0.1 mg
Concentration	Please see the vial label for concentration. If unlisted please contact technical services.
Storage	Store at 4C short term. Aliquot and store at -20C long term. Avoid freeze-thaw cycles.
Clonality	Polyclonal
Preservative	No Preservative
Isotype	IgG
Purity	Immunogen affinity purified
Buffer	20mM Potassium Phosphate (pH 7.0) and 0.15M NaCl

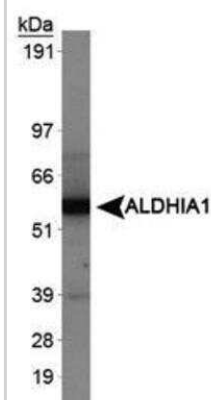
Product Description	
Host	Rabbit
Gene ID	216
Gene Symbol	ALDH1A1
Species	Human
Reactivity Notes	Human.
Marker	Astrocyte Marker
Specificity/Sensitivity	This product is specific for Human ALDH1A1.
Immunogen	This ALDH1A1 antibody is specific for the N Terminus Region of the human ALDH1A1 protein.
Notes	Manufactured by SDIX's proprietary Genomic Antibody Technology™. GAT FAQs .

Product Application Details	
Applications	Western Blot, ELISA, Immunocytochemistry/ Immunofluorescence, Immunohistochemistry, Immunohistochemistry-Paraffin
Recommended Dilutions	Western Blot 1:5000, ELISA 1:100-1:2000, Immunohistochemistry 1:10-1:500, Immunocytochemistry/ Immunofluorescence 1:50, Immunohistochemistry-Paraffin 1:10-1:500
Application Notes	This antibody is useful in ELISA, Immunofluorescence, Immunohistochemistry-Paraffin and Western Blot.

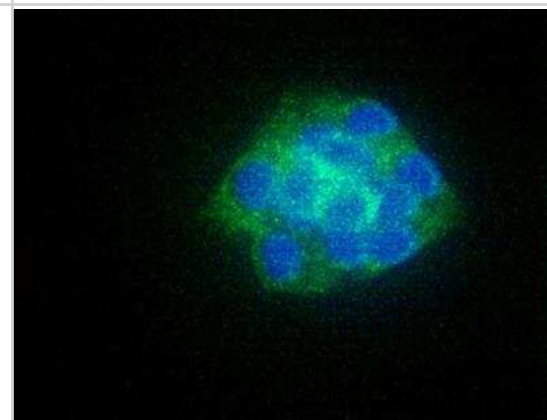


Images

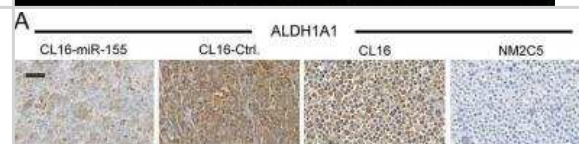
Western Blot: ALDH1A1 Antibody [31160002] - Western blot analysis of ALDH1A1 in HepG2 whole cell lysates.



Immunocytochemistry/Immunofluorescence: ALDH1A1 Antibody [31160002] - Detection of ALDH1A1 (Green) in HepG2 cells using 31160002. Nuclei (Blue) are counterstained using Hoechst 33258.

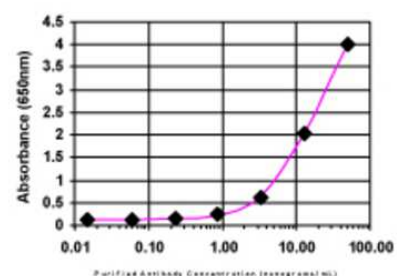


Immunohistochemistry: Aldehyde Dehydrogenase 1-A1/ALDH1A1 Antibody [31160002] - Immunohistochemical staining of ALDH1A1 in tumors derived from CL16 cells transduced with either miR-155 or Ctrl vector. Expression of the three targets in non-metastatic NM-2C5 (high miR-155) and metastatic CL16 cells (low miR-155) grown in vitro was also evaluated. Objective 40x, Scale bar 50 μ m. Image collected and cropped by CiteAb from the following publication (oncotarget.com/article/4942/text/), licensed under a CC-BY license



ELISA: ALDH1A1 Antibody [31160002]

ELISA:



The affinity purified antibody was serially diluted onto an ELISA plate coated with a recombinant protein fragment.

Publications

Garrison C, Lastwika K, Zhang Y et al. Proteomic Analysis, Immune Dysregulation, and Pathway Interconnections With Obesity J Proteome Res. 2017-01-06 [PMID: 27769113] (MiAr)

Details:

Analysis is performed on plasma proteomic data to identify how obesity can alter pathways and to highlight the risk factor for disease in subjects with a high body mass index.

Rho JH, Lampe PD. High-throughput screening for native autoantigen-autoantibody complexes using antibody microarrays J Proteome Res. 2013-05-03 [PMID: 23541305] (MiAr)

Details:

A novel method using antibody microarrays is used to detect autoantibody-antigen complexes that can potentially be useful for detection and characterization of diseases.

Thomsen KG, Terp MG, Lund RR et al. miR-155, identified as anti-metastatic by global miRNA profiling of a metastasis model, inhibits cancer cell extravasation and colonization in vivo and causes significant signaling alterations. Oncotarget 2015-10-06 [PMID: 26317550] (IF/IHC)





Novus Biologicals USA

10730 E. Briarwood Avenue
Centennial, CO 80112
USA
Phone: 303.730.1950
Toll Free: 1.888.506.6887
Fax: 303.730.1966
nb-customerservice@bio-techne.com

Bio-Techne Canada

21 Canmotor Ave
Toronto, ON M8Z 4E6
Canada
Phone: 905.827.6400
Toll Free: 855.668.8722
Fax: 905.827.6402
canada.inquires@bio-techne.com

Bio-Techne Ltd

19 Barton Lane
Abingdon Science Park
Abingdon, OX14 3NB, United Kingdom
Phone: (44) (0) 1235 529449
Free Phone: 0800 37 34 15
Fax: (44) (0) 1235 533420
info.EMEA@bio-techne.com

General Contact Information

www.novusbio.com
Technical Support: nb-technical@bio-techne.com
Orders: nb-customerservice@bio-techne.com
General: novus@novusbio.com

Limitations

This product is for research use only and is not approved for use in humans or in clinical diagnosis. Primary Antibodies are guaranteed for 1 year from date of receipt.

For more information on our 100% guarantee, please visit www.novusbio.com/guarantee

Earn gift cards/discounts by submitting a review: www.novusbio.com/reviews/submit/31160002

Earn gift cards/discounts by submitting a publication using this product:
www.novusbio.com/publications

