

# Product Datasheet

## Chk1 Antibody 29680002-0.1mg

Unit Size: 0.1 mg

Store at 4C short term. Aliquot and store at -20C long term. Avoid freeze-thaw cycles.

[www.novusbio.com](http://www.novusbio.com)



[technical@novusbio.com](mailto:technical@novusbio.com)

### Publications: 2

Protocols, Publications, Related Products, Reviews, Research Tools and Images at:  
[www.novusbio.com/29680002](http://www.novusbio.com/29680002)

Updated 4/3/2021 v.20.1

Earn rewards for product  
reviews and publications.

Submit a publication at [www.novusbio.com/publications](http://www.novusbio.com/publications)

Submit a review at [www.novusbio.com/reviews/destination/29680002](http://www.novusbio.com/reviews/destination/29680002)



**29680002-0.1mg**

Chk1 Antibody

**Product Information**

<b>Unit Size</b>	0.1 mg
<b>Concentration</b>	Please see the vial label for concentration. If unlisted please contact technical services.
<b>Storage</b>	Store at 4C short term. Aliquot and store at -20C long term. Avoid freeze-thaw cycles.
<b>Clonality</b>	Polyclonal
<b>Preservative</b>	No Preservative
<b>Isotype</b>	IgG
<b>Purity</b>	Immunogen affinity purified
<b>Buffer</b>	20mM Potassium Phosphate (pH 7.0) and 0.15M NaCl

**Product Description**

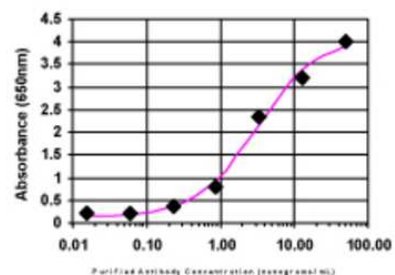
<b>Host</b>	Rabbit
<b>Gene ID</b>	1111
<b>Gene Symbol</b>	CHEK1
<b>Species</b>	Human
<b>Reactivity Notes</b>	Human.
<b>Specificity/Sensitivity</b>	This product is specific for Human CHEK1.
<b>Immunogen</b>	This antibody is specific for the Middle Region of the target protein.
<b>Notes</b>	Manufactured by SDIX's proprietary Genomic Antibody Technology <sup>®</sup> ; GAT <a href="#">FAQs</a> .

**Product Application Details**

<b>Applications</b>	ELISA
<b>Recommended Dilutions</b>	ELISA 1:100-1:2000
<b>Application Notes</b>	This antibody is useful in ELISA.

**Images**

ELISA: Chk1 Antibody [29680002]

**ELISA:**

The affinity purified antibody was serially diluted onto an ELISA plate coated with a recombinant protein fragment.

## Publications

Garrison C, Lastwika K, Zhang Y et al. Proteomic Analysis, Immune Dysregulation, and Pathway Interconnections With Obesity J Proteome Res. 2017-01-06 [PMID: 27769113] (MiAr)

### Details:

Analysis is performed on plasma proteomic data to identify how obesity can alter pathways and to highlight the risk factor for disease in subjects with a high body mass index.

Rho JH, Lampe PD. High-throughput screening for native autoantigen-autoantibody complexes using antibody microarrays J Proteome Res. 2013-05-03 [PMID: 23541305] (MiAr)

### Details:

A novel method using antibody microarrays is used to detect autoantibody-antigen complexes that can potentially be useful for detection and characterization of diseases.





### **Novus Biologicals USA**

10730 E. Briarwood Avenue  
Centennial, CO 80112  
USA

Phone: 303.730.1950  
Toll Free: 1.888.506.6887  
Fax: 303.730.1966  
novus@novusbio.com

### **Bio-Techne Canada**

21 Canmotor Ave  
Toronto, ON M8Z 4E6  
Canada

Phone: 905.827.6400  
Toll Free: 855.668.8722  
Fax: 905.827.6402  
canada.inquires@bio-techne.com

### **Bio-Techne Ltd**

19 Barton Lane  
Abingdon Science Park  
Abingdon, OX14 3NB, United Kingdom  
Phone: (44) (0) 1235 529449  
Free Phone: 0800 37 34 15  
Fax: (44) (0) 1235 533420  
info.EMEA@bio-techne.com

### **General Contact Information**

www.novusbio.com  
Technical Support: technical@novusbio.com  
Orders: orders@novusbio.com  
General: novus@novusbio.com

### **Limitations**

This product is for research use only and is not approved for use in humans or in clinical diagnosis. Primary Antibodies are guaranteed for 1 year from date of receipt.

For more information on our 100% guarantee, please visit [www.novusbio.com/guarantee](http://www.novusbio.com/guarantee)

Earn gift cards/discounts by submitting a review: [www.novusbio.com/reviews/submit/29680002](http://www.novusbio.com/reviews/submit/29680002)

Earn gift cards/discounts by submitting a publication using this product:  
[www.novusbio.com/publications](http://www.novusbio.com/publications)

