

Product Datasheet

LIN-13 Antibody 29570002-0.1mg

Unit Size: 0.1 mg

Store at 4C short term. Aliquot and store at -20C long term. Avoid freeze-thaw cycles.

www.novusbio.com



technical@novusbio.com

Publications: 2

Protocols, Publications, Related Products, Reviews, Research Tools and Images at:
www.novusbio.com/29570002

Updated 11/18/2020 v.20.1

Earn rewards for product
reviews and publications.

Submit a publication at www.novusbio.com/publications

Submit a review at www.novusbio.com/reviews/destination/29570002



29570002-0.1mg**LIN-13 Antibody****Product Information**

Unit Size	0.1 mg
Concentration	Please see the vial label for concentration. If unlisted please contact technical services.
Storage	Store at 4C short term. Aliquot and store at -20C long term. Avoid freeze-thaw cycles.
Clonality	Polyclonal
Preservative	No Preservative
Isotype	IgG
Purity	Immunogen affinity purified
Buffer	20mM Potassium Phosphate (pH 7.0) and 0.15M NaCl

Product Description

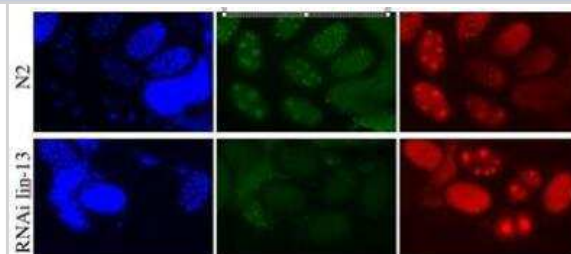
Host	Rabbit
Gene Symbol	LIN13
Species	C. elegans
Reactivity Notes	Human.
Specificity/Sensitivity	This antibody is specific to C. elegans LIN13
Immunogen	In vivo generated recombinant protein fragment
Notes	This product was created from the ModEncode Project, a part of the NHGRI, and is sold by SDIX and Novus Biologicals. These C. elegans antibodies were generated in the labs of Jason Lieb, Susan Strome, Julie Ahringer, Arshad Desai, and Abby Dernburg.

Product Application Details

Applications	Chromatin Immunoprecipitation, Immunocytochemistry/ Immunofluorescence
Recommended Dilutions	Chromatin Immunoprecipitation 1:10-1:500, Immunocytochemistry/ Immunofluorescence 1:10-1:2000
Application Notes	This antibody is useful in Chromatin Immunoprecipitation and Immunofluorescence.

Images

Immunocytochemistry/Immunofluorescence: LIN-13 Antibody [29570002]
 - This antibody is specific to animal number SDQ0838 Dilution: 1:5000
 MeOH fixation



Publications

Garrison C, Lastwika K, Zhang Y et al. Proteomic Analysis, Immune Dysregulation, and Pathway Interconnections With Obesity J Proteome Res. 2017-01-06 [PMID: 27769113] (MiAr)

Details:

Analysis is performed on plasma proteomic data to identify how obesity can alter pathways and to highlight the risk factor for disease in subjects with a high body mass index.

Rho JH, Lampe PD. High-throughput screening for native autoantigen-autoantibody complexes using antibody microarrays J Proteome Res. 2013-05-03 [PMID: 23541305] (MiAr)

Details:

A novel method using antibody microarrays is used to detect autoantibody-antigen complexes that can potentially be useful for detection and characterization of diseases.





Novus Biologicals USA

10730 E. Briarwood Avenue
Centennial, CO 80112
USA
Phone: 303.730.1950
Toll Free: 1.888.506.6887
Fax: 303.730.1966
nb-customerservice@bio-techne.com

Bio-Techne Canada

21 Canmotor Ave
Toronto, ON M8Z 4E6
Canada
Phone: 905.827.6400
Toll Free: 855.668.8722
Fax: 905.827.6402
canada.inquires@bio-techne.com

Bio-Techne Ltd

19 Barton Lane
Abingdon Science Park
Abingdon, OX14 3NB, United Kingdom
Phone: (44) (0) 1235 529449
Free Phone: 0800 37 34 15
Fax: (44) (0) 1235 533420
info.EMEA@bio-techne.com

General Contact Information

www.novusbio.com
Technical Support: nb-technical@bio-
techne.com
Orders: nb-customerservice@bio-techne.com
General: novus@novusbio.com

Limitations

This product is for research use only and is not approved for use in humans or in clinical diagnosis.
Primary Antibodies are guaranteed for 1 year from date of receipt.

For more information on our 100% guarantee, please visit www.novusbio.com/guarantee

Earn gift cards/discounts by submitting a review: www.novusbio.com/reviews/submit/29570002

Earn gift cards/discounts by submitting a publication using this product:
www.novusbio.com/publications

