

Product Datasheet

DEPDC1A Antibody 26630002-0.1mg

Unit Size: 0.1 mg

Store at 4C short term. Aliquot and store at -20C long term. Avoid freeze-thaw cycles.

www.novusbio.com



technical@novusbio.com

Publications: 2

Protocols, Publications, Related Products, Reviews, Research Tools and Images at:
www.novusbio.com/26630002

Updated 4/14/2021 v.20.1

Earn rewards for product
reviews and publications.

Submit a publication at www.novusbio.com/publications

Submit a review at www.novusbio.com/reviews/destination/26630002



26630002-0.1mg

DEPDC1A Antibody

Product Information

| | |
|----------------------|---|
| Unit Size | 0.1 mg |
| Concentration | Please see the vial label for concentration. If unlisted please contact technical services. |
| Storage | Store at 4C short term. Aliquot and store at -20C long term. Avoid freeze-thaw cycles. |
| Clonality | Polyclonal |
| Preservative | No Preservative |
| Isotype | IgG |
| Purity | Immunogen affinity purified |
| Buffer | 20mM Potassium Phosphate (pH 7.0) and 0.15M NaCl |

Product Description

| | |
|--------------------------------|--|
| Host | Rabbit |
| Gene ID | 55635 |
| Gene Symbol | DEPDC1 |
| Species | Human |
| Reactivity Notes | Human. |
| Specificity/Sensitivity | This product is specific for Human DEPDC1A. |
| Immunogen | This antibody is specific for the Middle Region of the target protein. |
| Notes | Manufactured by SDIX's proprietary Genomic Antibody Technology [®] ; GAT FAQs . |

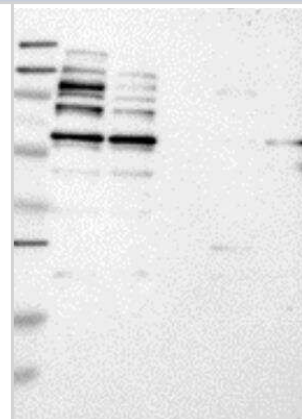
Product Application Details

| | |
|------------------------------|--|
| Applications | Western Blot, ELISA, Immunohistochemistry, Immunohistochemistry-Paraffin |
| Recommended Dilutions | Western Blot 1:5000-1:20000, ELISA 1:100-1:2000, Immunohistochemistry 1:10-1:500, Immunohistochemistry-Paraffin 1:250-1:2000 |
| Application Notes | This antibody is useful in ELISA, Immunohistochemistry-Paraffin and Western Blot. |

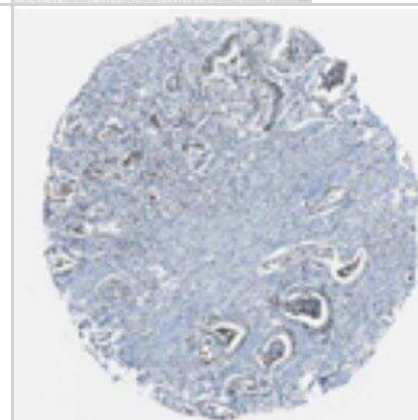


Images

Western Blot: DEPDC1A Antibody [26630002] - Samples: Lane 1, Marker [kDa]: 250, 130, 95, 72, 55, 36, 28, 17, 11 Lane 2, RT-4 Lane 3, U-251MG sp Lane 4, Human Plasma Lane 5, Liver Lane 6, Tonsil , Target weight [kDa]: 89, 61, 41, 31 (splice variants) Validation score: 2 Validation description: Supportive - Band of predicted size in kDa (+/- 20%) with additional bands present.

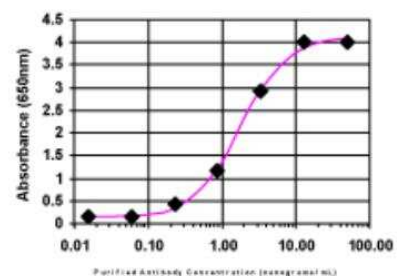


Immunohistochemistry: DEPDC1A Antibody [26630002] - Most of the normal tissues displayed weak nuclear positivity. Moderate immunoreactivity was seen in trophoblastic cells, glandular cells of gastro-intestinal tract and thyroid gland, glomerular and tubular cells of kidney. Lymphoid tissues and myocytes were negative. A majority of cancers showed moderate nuclear positivity. Lymphomas were weakly stained. Hepatocellular carcinomas were negative. Image and statement courtesy of the Human Protein Atlas (HPA).



ELISA: DEPDC1A Antibody [26630002]

ELISA:



The affinity purified antibody was serially diluted onto an ELISA plate coated with a recombinant protein fragment.

Publications

Garrison C, Lastwika K, Zhang Y et al. Proteomic Analysis, Immune Dysregulation, and Pathway Interconnections With Obesity J Proteome Res. 2017-01-06 [PMID: 27769113] (MiAr)

Details:

Analysis is performed on plasma proteomic data to identify how obesity can alter pathways and to highlight the risk factor for disease in subjects with a high body mass index.

Rho JH, Lampe PD. High-throughput screening for native autoantigen-autoantibody complexes using antibody microarrays J Proteome Res. 2013-05-03 [PMID: 23541305] (MiAr)

Details:

A novel method using antibody microarrays is used to detect autoantibody-antigen complexes that can potentially be useful for detection and characterization of diseases.



Novus Biologicals USA

10730 E. Briarwood Avenue
Centennial, CO 80112
USA

Phone: 303.730.1950
Toll Free: 1.888.506.6887
Fax: 303.730.1966
novus@novusbio.com

Bio-Techne Canada

21 Canmotor Ave
Toronto, ON M8Z 4E6
Canada

Phone: 905.827.6400
Toll Free: 855.668.8722
Fax: 905.827.6402
canada.inquires@bio-techne.com

Bio-Techne Ltd

19 Barton Lane
Abingdon Science Park
Abingdon, OX14 3NB, United Kingdom
Phone: (44) (0) 1235 529449
Free Phone: 0800 37 34 15
Fax: (44) (0) 1235 533420
info.EMEA@bio-techne.com

General Contact Information

www.novusbio.com
Technical Support: technical@novusbio.com
Orders: orders@novusbio.com
General: novus@novusbio.com

Limitations

This product is for research use only and is not approved for use in humans or in clinical diagnosis. Primary Antibodies are guaranteed for 1 year from date of receipt.

For more information on our 100% guarantee, please visit www.novusbio.com/guarantee

Earn gift cards/discounts by submitting a review: www.novusbio.com/reviews/submit/26630002

Earn gift cards/discounts by submitting a publication using this product:
www.novusbio.com/publications

