

Product Datasheet

c-jun Antibody 23890002-0.1mg

Unit Size: 0.1 mg

Store at 4C short term. Aliquot and store at -20C long term. Avoid freeze-thaw cycles.

www.novusbio.com



technical@novusbio.com

Publications: 2

Protocols, Publications, Related Products, Reviews, Research Tools and Images at:
www.novusbio.com/23890002

Updated 4/14/2021 v.20.1

Earn rewards for product
reviews and publications.

Submit a publication at www.novusbio.com/publications

Submit a review at www.novusbio.com/reviews/destination/23890002



23890002-0.1mg

c-jun Antibody

Product Information

Unit Size	0.1 mg
Concentration	Please see the vial label for concentration. If unlisted please contact technical services.
Storage	Store at 4C short term. Aliquot and store at -20C long term. Avoid freeze-thaw cycles.
Clonality	Polyclonal
Preservative	No Preservative
Isotype	IgG
Purity	Immunogen affinity purified
Buffer	20mM Potassium Phosphate (pH 7.0) and 0.15M NaCl

Product Description

Host	Rabbit
Gene ID	3725
Gene Symbol	JUN
Species	Human
Reactivity Notes	Human.
Specificity/Sensitivity	This product is specific for Human c-JUN.
Immunogen	This antibody is specific for the Middle Region of the target protein.
Notes	Manufactured by SDIX's proprietary Genomic Antibody Technology [®] ; GAT FAQs .

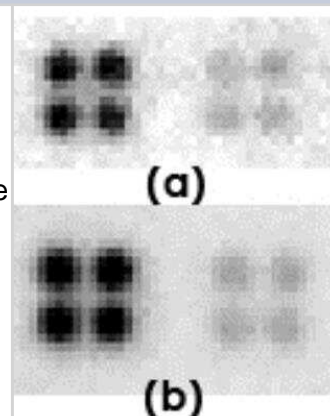
Product Application Details

Applications	Western Blot, Dot Blot, ELISA, Immunohistochemistry, Immunohistochemistry-Paraffin
Recommended Dilutions	Western Blot 1:5000-1:20000, ELISA 1:100-1:2000, Immunohistochemistry 1:10-1:500, Immunohistochemistry-Paraffin 1:250-1:2000, Dot Blot 1:100-1:2000
Application Notes	This antibody is useful in ELISA, Western Blot and Immunohistochemistry-Paraffin.

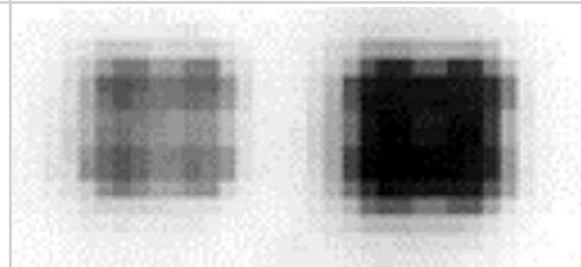


Images

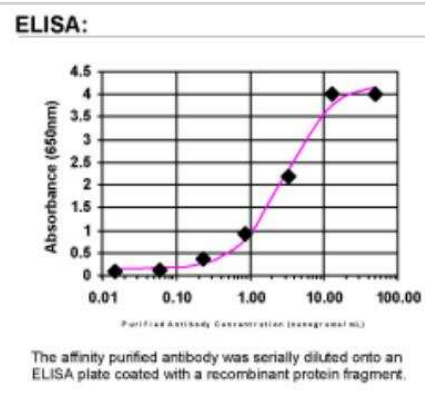
Dot Blot: c-jun Antibody [23890002] - The anti-c-Jun antibody (left quadruplicate spots at each panel) or anti-Sox2 antibody (right quadruplicate spots at each panel) were printed on membranes at 10 ng/spot. The membranes were incubated with biotinylated cell lysate (50 ug per membrane), followed by probing with streptavidin-HRP and CCD camera image acquisition. (a), Cell lysate from 293T cells; (b), Cell lysate from HeLa cells. Data courtesy of a SDI customer.



Dot Blot: c-jun Antibody [23890002] - Protein samples (left quadruplicate spots: HeLa cell lysate; right quadruplicate spots: 293T cell lysate) were printed on membranes at 10 ng/spot. The membrane was incubated with anti-c-Jun antibody (1:1000 dilution) and then probed anti-rabbit IgG-HRP. Signals were acquired with a CCD camera. Data courtesy of a SDI customer.



ELISA: c-jun Antibody [23890002]



Publications

Garrison C, Lastwika K, Zhang Y et al. Proteomic Analysis, Immune Dysregulation, and Pathway Interconnections With Obesity J Proteome Res. 2017-01-06 [PMID: 27769113] (MiAr)

Details:

Analysis is performed on plasma proteomic data to identify how obesity can alter pathways and to highlight the risk factor for disease in subjects with a high body mass index.

Rho JH, Lampe PD. High-throughput screening for native autoantigen-autoantibody complexes using antibody microarrays J Proteome Res. 2013-05-03 [PMID: 23541305] (MiAr)

Details:

A novel method using antibody microarrays is used to detect autoantibody-antigen complexes that can potentially be useful for detection and characterization of diseases.



Novus Biologicals USA

10730 E. Briarwood Avenue
Centennial, CO 80112
USA
Phone: 303.730.1950
Toll Free: 1.888.506.6887
Fax: 303.730.1966
novus@novusbio.com

Bio-Techne Canada

21 Canmotor Ave
Toronto, ON M8Z 4E6
Canada
Phone: 905.827.6400
Toll Free: 855.668.8722
Fax: 905.827.6402
canada.inquires@bio-techne.com

Bio-Techne Ltd

19 Barton Lane
Abingdon Science Park
Abingdon, OX14 3NB, United Kingdom
Phone: (44) (0) 1235 529449
Free Phone: 0800 37 34 15
Fax: (44) (0) 1235 533420
info.EMEA@bio-techne.com

General Contact Information

www.novusbio.com
Technical Support: technical@novusbio.com
Orders: orders@novusbio.com
General: novus@novusbio.com

Limitations

This product is for research use only and is not approved for use in humans or in clinical diagnosis. Primary Antibodies are guaranteed for 1 year from date of receipt.

For more information on our 100% guarantee, please visit www.novusbio.com/guarantee

Earn gift cards/discounts by submitting a review: www.novusbio.com/reviews/submit/23890002

Earn gift cards/discounts by submitting a publication using this product:
www.novusbio.com/publications

