

Product Datasheet

IMP2/IGF2BP2 Antibody 23750002-0.1mg

Unit Size: 0.1 mg

Store at 4C short term. Aliquot and store at -20C long term. Avoid freeze-thaw cycles.

www.novusbio.com



technical@novusbio.com

Publications: 2

Protocols, Publications, Related Products, Reviews, Research Tools and Images at:
www.novusbio.com/23750002

Updated 3/3/2021 v.20.1

Earn rewards for product
reviews and publications.

Submit a publication at www.novusbio.com/publications

Submit a review at www.novusbio.com/reviews/destination/23750002



23750002-0.1mg**IMP2/IGF2BP2 Antibody**

Product Information	
Unit Size	0.1 mg
Concentration	Please see the vial label for concentration. If unlisted please contact technical services.
Storage	Store at 4C short term. Aliquot and store at -20C long term. Avoid freeze-thaw cycles.
Clonality	Polyclonal
Preservative	No Preservative
Isotype	IgG
Purity	Immunogen affinity purified
Buffer	20mM Potassium Phosphate (pH 7.0) and 0.15M NaCl

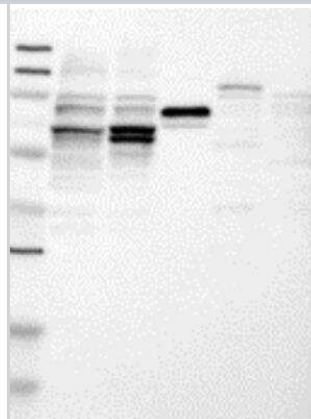
Product Description	
Host	Rabbit
Gene ID	10644
Gene Symbol	IGF2BP2
Species	Human
Reactivity Notes	Human.
Specificity/Sensitivity	This product is specific for Human IGF2BP2.
Immunogen	This antibody is specific for the N Terminus Region of the target protein.
Notes	Manufactured by SDIX's proprietary Genomic Antibody Technology™; GAT FAQs .

Product Application Details	
Applications	Western Blot, ELISA, Immunohistochemistry, Immunohistochemistry-Paraffin
Recommended Dilutions	Western Blot 1:5000-1:20000, ELISA 1:100-1:2000, Immunohistochemistry 1:10-1:500, Immunohistochemistry-Paraffin 1:250-1:2000
Application Notes	This antibody is useful in ELISA, Immunohistochemistry-Paraffin and Western Blot.



Images

Western Blot: IMP2/IGF2BP2 Antibody [23750002] - Samples: Lane 1, Marker [kDa]: 250, 130, 95, 72, 55, 36, 28, 17, 11 Lane 2, RT-4 Lane 3, U-251MG sp Lane 4, Human Plasma Lane 5, Liver Lane 6, Tonsil Target weight [kDa]: 66, 62 (splice variants) Validation score: 2 Validation description: Supportive - Band of predicted size in kDa (+/-20%) with additional bands present.

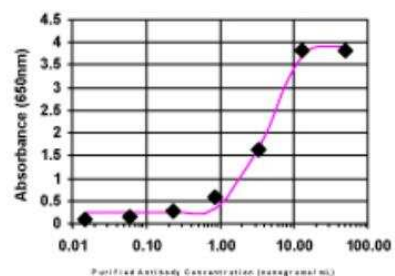


Immunohistochemistry: IMP2/IGF2BP2 Antibody [23750002] - Both normal and malignant tissues showed moderate to strong cytoplasmic staining. In normal tissues, surface epithelial cells of bronchus, glandular cells of the intestine, endometrium and cervix, and trophoblastic cells displayed strong cytoplasmic staining. Pancreas, surface epithelial cells of oral mucosa, vagina and cervix, non-neuronal cells of CNS tissues and lymphoid tissues were negative. Colo-rectal, skin and testis carcinomas exhibited strong cytoplasmic staining while ovarian, stomach and pancreas malignancies displayed moderate to strong cytoplasmic staining. Malignant carcinoids showed weak cytoplasmic and nuclear staining. Renal and prostate malignancies were weak to negative. Image and statement courtesy of the Human Protein Atlas (HPA).



ELISA: IMP2/IGF2BP2 Antibody [23750002]

ELISA:



The affinity purified antibody was serially diluted onto an ELISA plate coated with a recombinant protein fragment.

Publications

Garrison C, Lastwika K, Zhang Y et al. Proteomic Analysis, Immune Dysregulation, and Pathway Interconnections With Obesity J Proteome Res. 2017-01-06 [PMID: 27769113] (MiAr)

Details:

Analysis is performed on plasma proteomic data to identify how obesity can alter pathways and to highlight the risk factor for disease in subjects with a high body mass index.

Rho JH, Lampe PD. High-throughput screening for native autoantigen-autoantibody complexes using antibody microarrays J Proteome Res. 2013-05-03 [PMID: 23541305] (MiAr)

Details:

A novel method using antibody microarrays is used to detect autoantibody-antigen complexes that can potentially be useful for detection and characterization of diseases.



Novus Biologicals USA

10730 E. Briarwood Avenue
Centennial, CO 80112
USA

Phone: 303.730.1950
Toll Free: 1.888.506.6887
Fax: 303.730.1966
novus@novusbio.com

Bio-Techne Canada

21 Canmotor Ave
Toronto, ON M8Z 4E6
Canada

Phone: 905.827.6400
Toll Free: 855.668.8722
Fax: 905.827.6402
canada.inquires@bio-techne.com

Bio-Techne Ltd

19 Barton Lane
Abingdon Science Park
Abingdon, OX14 3NB, United Kingdom
Phone: (44) (0) 1235 529449
Free Phone: 0800 37 34 15
Fax: (44) (0) 1235 533420
info.EMEA@bio-techne.com

General Contact Information

www.novusbio.com
Technical Support: technical@novusbio.com
Orders: orders@novusbio.com
General: novus@novusbio.com

Limitations

This product is for research use only and is not approved for use in humans or in clinical diagnosis. Primary Antibodies are guaranteed for 1 year from date of receipt.

For more information on our 100% guarantee, please visit www.novusbio.com/guarantee

Earn gift cards/discounts by submitting a review: www.novusbio.com/reviews/submit/23750002

Earn gift cards/discounts by submitting a publication using this product:
www.novusbio.com/publications

