

Product Datasheet

CC2D1A Antibody 22310002-0.1mg

Unit Size: 0.1 mg

Store at 4C short term. Aliquot and store at -20C long term. Avoid freeze-thaw cycles.

www.novusbio.com



technical@novusbio.com

Publications: 2

Protocols, Publications, Related Products, Reviews, Research Tools and Images at:
www.novusbio.com/22310002

Updated 4/3/2021 v.20.1

Earn rewards for product
reviews and publications.

Submit a publication at www.novusbio.com/publications

Submit a review at www.novusbio.com/reviews/destination/22310002



22310002-0.1mg

CC2D1A Antibody

| Product Information | |
|----------------------|---|
| Unit Size | 0.1 mg |
| Concentration | Please see the vial label for concentration. If unlisted please contact technical services. |
| Storage | Store at 4C short term. Aliquot and store at -20C long term. Avoid freeze-thaw cycles. |
| Clonality | Polyclonal |
| Preservative | No Preservative |
| Isotype | IgG |
| Purity | Immunogen affinity purified |
| Buffer | 20mM Potassium Phosphate (pH 7.0) and 0.15M NaCl |

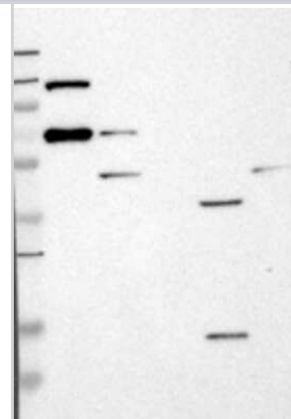
| Product Description | |
|--------------------------------|---|
| Host | Rabbit |
| Gene ID | 54862 |
| Gene Symbol | CC2D1A |
| Species | Human |
| Reactivity Notes | Human. |
| Specificity/Sensitivity | This product is specific for Human CC2D1A. |
| Immunogen | This antibody is specific for the Middle Region of the target protein. |
| Notes | Manufactured by SDIX's proprietary Genomic Antibody Technology™; GAT FAQs . |

| Product Application Details | |
|------------------------------|--|
| Applications | Western Blot, ELISA, Immunohistochemistry, Immunohistochemistry-Paraffin |
| Recommended Dilutions | Western Blot 1:5000-1:20000, ELISA 1:100-1:2000, Immunohistochemistry 1:10-1:500, Immunohistochemistry-Paraffin 1:10-1:500 |
| Application Notes | This antibody is useful in ELISA, Immunohistochemistry-Paraffin and Western Blot. |

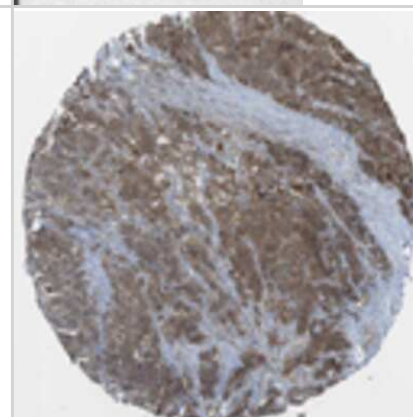


Images

Western Blot: CC2D1A Antibody [22310002] - Samples: Lane 1, Marker [kDa]: 250, 130, 95, 72, 55, 36, 28, 17, 11 Lane 2, RT-4 Lane 3, U-251MG sp Lane 4, Human Plasma Lane 5, Liver Lane 6, Tonsil , Target weight [kDa]: 104, 64, 40, 25 (splice variants) Validation score: 2 Validation description: Supportive - Band of predicted size in kDa (+/- 20%) with additional bands present.

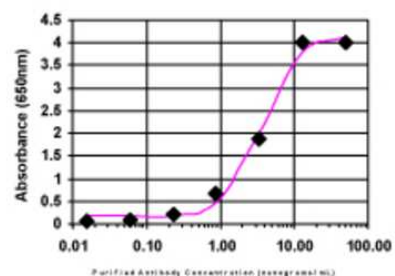


Immunohistochemistry: CC2D1A Antibody [22310002] - Most of the normal tissues displayed moderate cytoplasmic immunoreactivity. Nucleolar positivity was observed in neuronal, lymphoid and renal cells. Strong cytoplasmic staining was observed in glandular cells of gastrointestinal tract whereas neuronal cells of CNS revealed strong nucleolar staining. Malignant tissues exhibited moderate cytoplasmic positivity accompanied with moderate to strong nucleolar immunoreactivity in many tumors. Image and statement courtesy of the Human Protein Atlas (HPA).



ELISA: CC2D1A Antibody [22310002]

ELISA:



The affinity purified antibody was serially diluted onto an ELISA plate coated with a recombinant protein fragment.

Publications

Garrison C, Lastwika K, Zhang Y et al. Proteomic Analysis, Immune Dysregulation, and Pathway Interconnections With Obesity J Proteome Res. 2017-01-06 [PMID: 27769113] (MiAr)

Details:

Analysis is performed on plasma proteomic data to identify how obesity can alter pathways and to highlight the risk factor for disease in subjects with a high body mass index.

Rho JH, Lampe PD. High-throughput screening for native autoantigen-autoantibody complexes using antibody microarrays J Proteome Res. 2013-05-03 [PMID: 23541305] (MiAr)

Details:

A novel method using antibody microarrays is used to detect autoantibody-antigen complexes that can potentially be useful for detection and characterization of diseases.



Novus Biologicals USA

10730 E. Briarwood Avenue
Centennial, CO 80112
USA

Phone: 303.730.1950
Toll Free: 1.888.506.6887
Fax: 303.730.1966
novus@novusbio.com

Bio-Techne Canada

21 Canmotor Ave
Toronto, ON M8Z 4E6
Canada

Phone: 905.827.6400
Toll Free: 855.668.8722
Fax: 905.827.6402
canada.inquires@bio-techne.com

Bio-Techne Ltd

19 Barton Lane
Abingdon Science Park
Abingdon, OX14 3NB, United Kingdom
Phone: (44) (0) 1235 529449
Free Phone: 0800 37 34 15
Fax: (44) (0) 1235 533420
info.EMEA@bio-techne.com

General Contact Information

www.novusbio.com
Technical Support: technical@novusbio.com
Orders: orders@novusbio.com
General: novus@novusbio.com

Limitations

This product is for research use only and is not approved for use in humans or in clinical diagnosis. Primary Antibodies are guaranteed for 1 year from date of receipt.

For more information on our 100% guarantee, please visit www.novusbio.com/guarantee

Earn gift cards/discounts by submitting a review: www.novusbio.com/reviews/submit/22310002

Earn gift cards/discounts by submitting a publication using this product:
www.novusbio.com/publications

