

# Product Datasheet

## ROPN1 Antibody 21050002-0.1mg

Unit Size: 0.1 mg

Store at 4C short term. Aliquot and store at -20C long term. Avoid freeze-thaw cycles.

[www.novusbio.com](http://www.novusbio.com)



[technical@novusbio.com](mailto:technical@novusbio.com)

### Publications: 2

Protocols, Publications, Related Products, Reviews, Research Tools and Images at:  
[www.novusbio.com/21050002](http://www.novusbio.com/21050002)

Updated 4/14/2021 v.20.1

Earn rewards for product  
reviews and publications.

Submit a publication at [www.novusbio.com/publications](http://www.novusbio.com/publications)

Submit a review at [www.novusbio.com/reviews/destination/21050002](http://www.novusbio.com/reviews/destination/21050002)



**21050002-0.1mg**

ROPN1 Antibody

| Product Information |   |
|---------------------|---|
| Unit Size           | 0.1 mg  |
| Concentration       | Please see the vial label for concentration. If unlisted please contact technical services. |
| Storage             | Store at 4C short term. Aliquot and store at -20C long term. Avoid freeze-thaw cycles.      |
| Clonality           | Polyclonal  |
| Preservative        | No Preservative   |
| Isotype             | IgG   |
| Purity              | Immunogen affinity purified   |
| Buffer              | 20mM Potassium Phosphate (pH 7.0) and 0.15M NaCl  |

| Product Description     |  |
|-------------------------|--|
| Host                    | Rabbit   |
| Gene ID                 | 54763  |
| Gene Symbol             | ROPN1  |
| Species                 | Human  |
| Reactivity Notes        | Human.   |
| Specificity/Sensitivity | This product is specific for Human ROPN1.  |
| Immunogen               | This antibody is specific for the N Terminus Region of the target protein.                               |
| Notes                   | Manufactured by SDIX's proprietary Genomic Antibody Technology <sup>®</sup> ; GAT <a href="#">FAQs</a> . |

| Product Application Details |   |
|-----------------------------|---|
| Applications                | Western Blot, ELISA, Immunohistochemistry, Immunohistochemistry-Paraffin  |
| Recommended Dilutions       | Western Blot 0.5-1.5 ug/ml, ELISA 1:100-1:2000, Immunohistochemistry 1:10-1:500, Immunohistochemistry-Paraffin 1:10-1:500 |



## Images

**Western Blot: ROPN1 Antibody [21050002]** - Western Blot was performed using affinity purified SEQer ROPN1 antibody, aa(1-99) antibody. The lanes contain 5-30ug of a whole cell extract. Final concentration of antibodies = 0.1ug/ml (1:10,000 dilution). The blot was probed overnight with the SEQer ROPN1 antibody, aa(1-99) antibody. Blot was then washed according to protocol and probed with goat-anti-Rabbit-HRP conjugate at 1:5000 dilution, washed and developed using chemiluminescence (film exposure 5-30sec). The protein was detected as represented by the band shown.

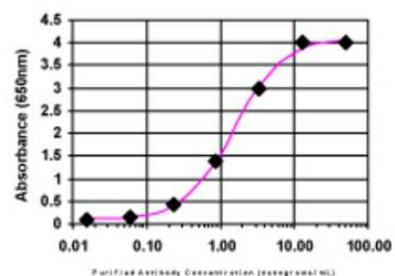


**Immunohistochemistry: ROPN1 Antibody [21050002]** - Normal tissues showed moderate to strong cytoplasmic staining. Additional membranous positivity was sometimes seen. Testis, gastro-intestinal tract, parathyroid gland, placenta, spleen and myocytes displayed strong cytoplasmic immunoreactivity. A majority of cancers displayed moderate cytoplasmic staining. Colo-rectal, renal, stomach and liver malignancies exhibited moderate to strong positivity. Gliomas, lymphomas, melanomas, skin and lung cancers were weakly to moderately stained. Image and statement courtesy of the Human Protein Atlas (HPA).



**ELISA: ROPN1 Antibody [21050002]**

**ELISA:**



The affinity purified antibody was serially diluted onto an ELISA plate coated with a recombinant protein fragment.

## Publications

Garrison C, Lastwika K, Zhang Y et al. Proteomic Analysis, Immune Dysregulation, and Pathway Interconnections With Obesity J Proteome Res. 2017-01-06 [PMID: 27769113] (MiAr)

Details:

Analysis is performed on plasma proteomic data to identify how obesity can alter pathways and to highlight the risk factor for disease in subjects with a high body mass index.

Rho JH, Lampe PD. High-throughput screening for native autoantigen-autoantibody complexes using antibody microarrays J Proteome Res. 2013-05-03 [PMID: 23541305] (MiAr)

Details:

A novel method using antibody microarrays is used to detect autoantibody-antigen complexes that can potentially be useful for detection and characterization of diseases.



### **Novus Biologicals USA**

10730 E. Briarwood Avenue  
Centennial, CO 80112  
USA

Phone: 303.730.1950  
Toll Free: 1.888.506.6887  
Fax: 303.730.1966  
novus@novusbio.com

### **Bio-Techne Canada**

21 Canmotor Ave  
Toronto, ON M8Z 4E6  
Canada

Phone: 905.827.6400  
Toll Free: 855.668.8722  
Fax: 905.827.6402  
canada.inquires@bio-techne.com

### **Bio-Techne Ltd**

19 Barton Lane  
Abingdon Science Park  
Abingdon, OX14 3NB, United Kingdom  
Phone: (44) (0) 1235 529449  
Free Phone: 0800 37 34 15  
Fax: (44) (0) 1235 533420  
info.EMEA@bio-techne.com

### **General Contact Information**

www.novusbio.com  
Technical Support: technical@novusbio.com  
Orders: orders@novusbio.com  
General: novus@novusbio.com

### **Limitations**

This product is for research use only and is not approved for use in humans or in clinical diagnosis. Primary Antibodies are guaranteed for 1 year from date of receipt.

For more information on our 100% guarantee, please visit [www.novusbio.com/guarantee](http://www.novusbio.com/guarantee)

Earn gift cards/discounts by submitting a review: [www.novusbio.com/reviews/submit/21050002](http://www.novusbio.com/reviews/submit/21050002)

Earn gift cards/discounts by submitting a publication using this product:  
[www.novusbio.com/publications](http://www.novusbio.com/publications)

