

Product Datasheet

SGPL1 Antibody [Unconjugated] AF5535-SP

Unit Size: 25 ug

Use a manual defrost freezer and avoid repeated freeze-thaw cycles. 12 months from date of receipt, -20 to -70 °C as supplied. 1 month, 2 to 8 °C under sterile conditions after reconstitution. 6 months, -20 to -70 °C under sterile conditions after reconstitution.

www.novusbio.com



technical@novusbio.com

Publications: 3

Protocols, Publications, Related Products, Reviews, Research Tools and Images at:
www.novusbio.com/AF5535

Updated 10/20/2016 v.20.1

Earn rewards for product
reviews and publications.

Submit a publication at www.novusbio.com/publications

Submit a review at www.novusbio.com/reviews/destination/AF5535



AF5535-SP

SGPL1 Antibody [Unconjugated]

Product Information	
Unit Size	25 ug
Concentration	LYOPH mg/ml
Storage	Use a manual defrost freezer and avoid repeated freeze-thaw cycles. 12 months from date of receipt, -20 to -70 °C as supplied. 1 month, 2 to 8 °C under sterile conditions after reconstitution. 6 months, -20 to -70 °C under sterile conditions after reconstitution.
Clonality	Polyclonal
Preservative	No Preservative
Reconstitution Instructions	Reconstitute at 0.2 mg/mL in sterile PBS.
Isotype	IgG
Conjugate	Unconjugated
Purity	Immunogen affinity purified
Buffer	Lyophilized from a 0.2 µm filtered solution in PBS with Trehalose. *Small pack size (SP) is supplied as a 0.2 µm filtered solution in PBS.

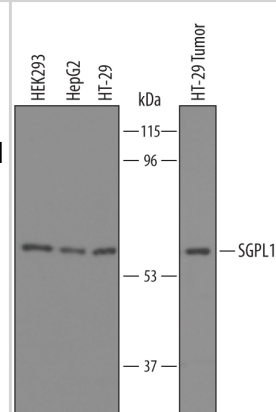
Product Description	
Host	Goat
Gene ID	8879
Gene Symbol	SGPL1
Species	Human
Specificity/Sensitivity	Detects human SGPL1 in direct ELISAs and Western blots.
Immunogen	<i>E. coli</i> -derived recombinant human SGPL1 Lys342-His568 Accession # O95470
Notes	This product is produced by and ships from R&D Systems, Inc., a Bio-Techne brand.

Product Application Details	
Applications	Western Blot, Simple Western
Recommended Dilutions	Western Blot 1 ug/mL, Simple Western 50 ug/mL

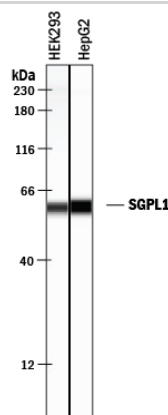


Images

Western blot shows lysates of HEK293 human embryonic kidney cell line, HepG2 human hepatocellular carcinoma cell line, HT-29 human colon adenocarcinoma cell line, and HT-29 tumor tissue. PVDF membrane was probed with 1 µg/mL of Goat Anti-Human SGPL1 Antigen Affinity-purified Polyclonal Antibody (Catalog # AF5535) followed by HRP-conjugated Anti-Goat IgG Secondary Antibody (Catalog # HAF019). A specific band was detected for SGPL1 at approximately 60 kDa (as indicated). This experiment was conducted under reducing conditions and using [Immunoblot Buffer Group 8](#).



Simple Western lane view shows lysates of HEK293 human embryonic kidney cell line and HepG2 human hepatocellular carcinoma cell line, loaded at 0.2 mg/mL. A specific band was detected for SGPL1 at approximately 60 kDa (as indicated) using 50 µg/mL of Goat Anti-Human SGPL1 Antigen Affinity-purified Polyclonal Antibody (Catalog # AF5535) followed by 1:50 dilution of HRP-conjugated Anti-Goat IgG Secondary Antibody (Catalog # HAF109). This experiment was conducted under reducing conditions and using the 12-230 kDa separation system.



Publications

S Lovric, S Goncalves, HY Gee, B Oskouian, H Srinivas, WI Choi, S Shril, S Ashraf, W Tan, J Rao, M Airik, D Schapiro, DA Braun, CE Sadowski, E Widmeier, T Jobst-Schw, JM Schmidt, V Girik, G Capitani, JH Suh, N Lachaussee, C Arrondel, J Patat, O Gribouval, M Furlano, O Boyer, A Schmitt, V Vuiblet, S Hashmi, R Wilcken, FP Bernier, AM Innes, JS Parboosing, RE Lamont, JP Midgley, N Wright, J Majewski, M Zenker, F Schaefer, N Kuss, J Greil, T Giese, K Schwarz, V Catheline, D Schanze, I Franke, Y Sznajer, AS Truant, B Adams, J Désir, R Biemann, Y Pei, E Ars, N Lloberas, A Madrid, VR Dharnidhar, AM Connolly, MC Willing, MA Cooper, RP Lifton, M Simons, H Riezman, C Antignac, JD Saba, F Hildebrand Mutations in sphingosine-1-phosphate lyase cause nephrosis with ichthyosis and adrenal insufficiency *J. Clin. Invest.*, 2017;127(3):912-928. 2017 [PMID: 28165339] (IHC, , Mouse)

Erkhembaatar L, Kotani T, Sumigama S, Tsuda H, Mano Y, Hua L, Hasegawa Y, Wang J, Sugiyama C, Nakahara T, Iwase A, Kikkawa F Increased expression of sphingosine kinase in the amnion during labor. *Placenta*, 2013;34(4):353-9. 2013 [PMID: 23462226] (WB, , Human)

Abu El-Asrar , Ahmed M, Nawaz , Mohd Imt, Mohammad , Ghulam, Siddiquei , Mohammad, Alam , Kaiser, Mousa , Ahmed, Opdenakker , Ghislain Expression of bioactive lysophospholipids and processing enzymes in the vitreous from patients with proliferative diabetic retinopathy. *Lipids Health Dis*, 2014;13(0):187. 2014 [PMID: 25496321] (WB, , Human)



Novus Biologicals USA

8100 Southpark Way, A-8
Littleton, CO 80120
USA

Phone: 303.730.1950
Toll Free: 1.888.506.6887
Fax: 303.730.1966
novus@novusbio.com

Novus Biologicals Canada

461 North Service Road West, Unit B37
Oakville, ON L6M 2V5
Canada

Phone: 905.827.6400
Toll Free: 855.668.8722
Fax: 905.827.6402
canada@novusbio.com

Novus Biologicals Europe

19 Barton Lane
Abingdon Science Park
Abingdon, OX14 3NB, United Kingdom
Phone: (44) (0) 1235 529449
Free Phone: 0800 37 34 15
Fax: (44) (0) 1235 533420
info@bio-techne.com

General Contact Information

www.novusbio.com
Technical Support: technical@novusbio.com
Orders: orders@novusbio.com
General: novus@novusbio.com

Limitations

This product is for research use only and is not approved for use in humans or in clinical diagnosis. Primary Antibodies are guaranteed for 1 year from date of receipt.

For more information on our 100% guarantee, please visit www.novusbio.com/guarantee

Earn gift cards/discounts by submitting a review: www.novusbio.com/reviews/submit/AF5535

Earn gift cards/discounts by submitting a publication using this product:
www.novusbio.com/publications

