

Product Datasheet

Laminin alpha 2 Antibody (CL3450) - BSA Free NBP2-46624

Unit Size: 0.1 ml

Store at 4C short term. Aliquot and store at -20C long term. Avoid freeze-thaw cycles.

www.novusbio.com



technical@novusbio.com

Protocols, Publications, Related Products, Reviews, Research Tools and Images at:
www.novusbio.com/NBP2-46624

Updated 2/27/2025 v.20.1

Earn rewards for product
reviews and publications.

Submit a publication at www.novusbio.com/publications

Submit a review at www.novusbio.com/reviews/destination/NBP2-46624



NBP2-46624

Laminin alpha 2 Antibody (CL3450) - BSA Free

Product Information

Unit Size	0.1 ml
Concentration	Concentrations vary lot to lot. See vial label for concentration. If unlisted please contact technical services.
Storage	Store at 4C short term. Aliquot and store at -20C long term. Avoid freeze-thaw cycles.
Clonality	Monoclonal
Clone	CL3450
Preservative	0.02% Sodium Azide
Isotype	IgG1
Purity	Protein A purified
Buffer	PBS (pH 7.2) and 40% Glycerol

Product Description

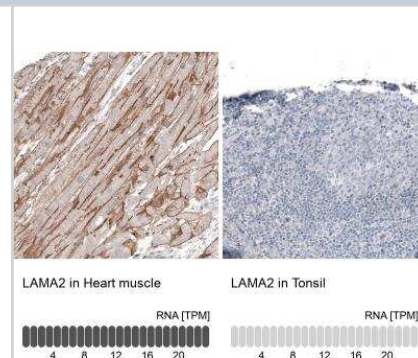
Host	Mouse
Gene ID	3908
Gene Symbol	LAMA2
Species	Human, Mouse, Rat
Reactivity Notes	Please note that this antibody is reactive to Mouse and derived from the same host, Mouse. Mouse-On-Mouse blocking reagent may be needed for IHC and ICC experiments to reduce high background signal. You can find these reagents under catalog numbers PK-2200-NB and MP-2400-NB. Please contact Technical Support if you have any questions
Immunogen	This antibody was developed using a recombinant protein derived from P24043, with the exact immunogen sequence remaining proprietary.

Product Application Details

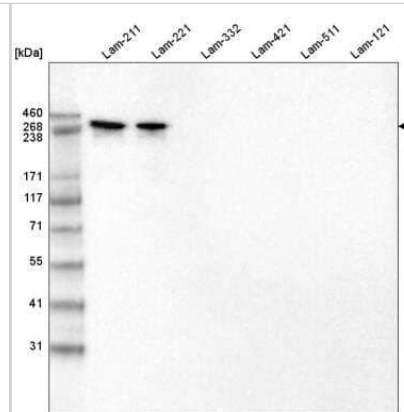
Applications	Western Blot, Immunohistochemistry, Immunohistochemistry-Paraffin
Recommended Dilutions	Western Blot 1 ug/ml, Immunohistochemistry 1:200 - 1:500, Immunohistochemistry-Paraffin 1:200-1:500
Application Notes	For IHC-Paraffin, HIER pH 6 retrieval is recommended.

Images

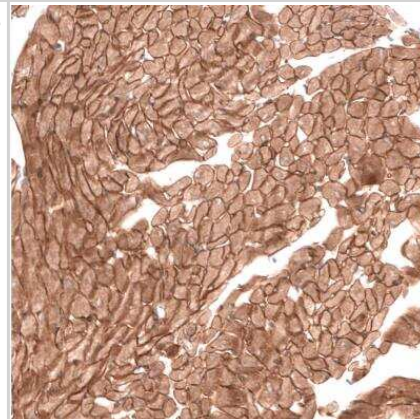
Immunohistochemistry-Paraffin: Laminin alpha 2 Antibody (CL3450) [NBP2-46624] - Laminin alpha 2 Antibody (3450) [NBP2-46624] - Staining in human heart muscle and tonsil tissues. Corresponding LAMA2 RNA-seq data are presented for the same tissues.



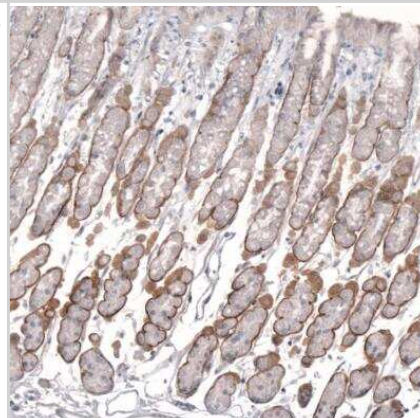
Western Blot: Laminin alpha 2 Antibody (3450) [NBP2-46624] - Analysis of purified human recombinant Laminin-211, Laminin-221, Laminin-332, Laminin-421, Laminin-511 and Laminin-121.



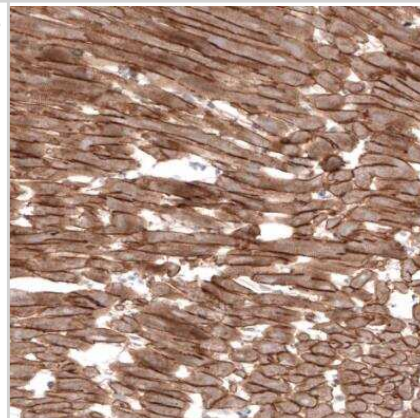
Immunohistochemistry-Paraffin: Laminin alpha 2 Antibody (3450) [NBP2-46624] - Staining of mouse heart muscle shows strong membranous positivity in cardiomyocytes.



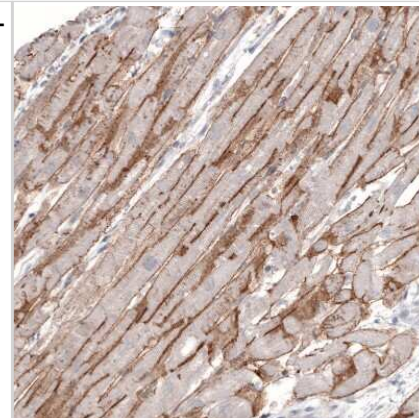
Immunohistochemistry-Paraffin: Laminin alpha 2 Antibody (3450) [NBP2-46624] - Staining of rat stomach shows strong positivity in basement membrane of glandular cells.



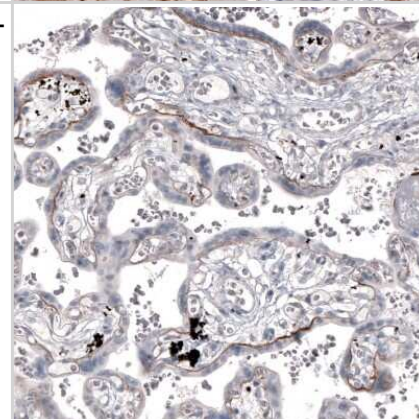
Immunohistochemistry-Paraffin: Laminin alpha 2 Antibody (3450) [NBP2-46624] - Staining of rat heart muscle shows strong membranous positivity in cardiomyocytes.



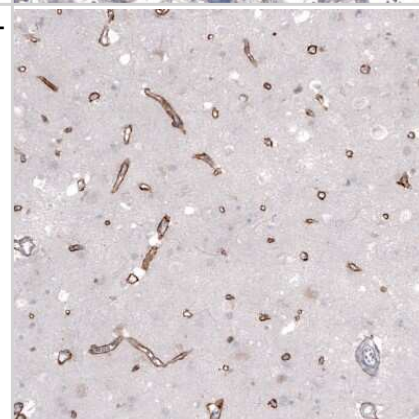
Immunohistochemistry-Paraffin: Laminin alpha 2 Antibody (3450) [NBP2-46624] - Staining of human heart muscle shows strong membranous positivity in cardiomyocytes.



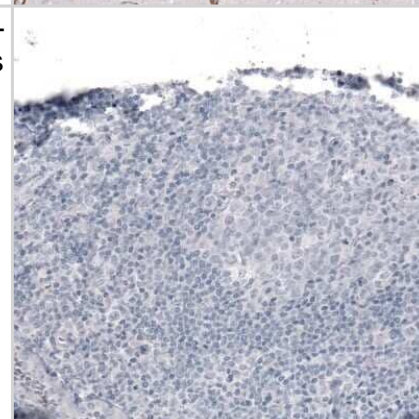
Immunohistochemistry-Paraffin: Laminin alpha 2 Antibody (3450) [NBP2-46624] - Staining of human placenta shows moderate positivity in basement membrane of trophoblastic cells.



Immunohistochemistry-Paraffin: Laminin alpha 2 Antibody (3450) [NBP2-46624] - Staining of human cerebral cortex shows moderate positivity in blood vessels.



Immunohistochemistry-Paraffin: Laminin alpha 2 Antibody (3450) [NBP2-46624] - Staining of human tonsil shows no positivity in lymphoid cells as expected.





Novus Biologicals USA

10730 E. Briarwood Avenue
Centennial, CO 80112
USA
Phone: 303.730.1950
Toll Free: 1.888.506.6887
Fax: 303.730.1966
nb-customerservice@bio-techne.com

Bio-Techne Canada

21 Canmotor Ave
Toronto, ON M8Z 4E6
Canada
Phone: 905.827.6400
Toll Free: 855.668.8722
Fax: 905.827.6402
canada.inquires@bio-techne.com

Bio-Techne Ltd

19 Barton Lane
Abingdon Science Park
Abingdon, OX14 3NB, United Kingdom
Phone: (44) (0) 1235 529449
Free Phone: 0800 37 34 15
Fax: (44) (0) 1235 533420
info.EMEA@bio-techne.com

General Contact Information

www.novusbio.com
Technical Support: nb-technical@bio-techne.com
Orders: nb-customerservice@bio-techne.com
General: novus@novusbio.com

Products Related to NBP2-46624

NBP2-46624PEP	Laminin alpha 2 Recombinant Protein Antigen
HAF007	Goat anti-Mouse IgG Secondary Antibody [HRP]
NB720-B	Rabbit anti-Mouse IgG (H+L) Secondary Antibody [Biotin]
NBP1-97005-0.5mg	Mouse IgG1 Isotype Control (MG1)

Limitations

This product is for research use only and is not approved for use in humans or in clinical diagnosis. Primary Antibodies are guaranteed for 1 year from date of receipt.

For more information on our 100% guarantee, please visit www.novusbio.com/guarantee

Earn gift cards/discounts by submitting a review: www.novusbio.com/reviews/submit/NBP2-46624

Earn gift cards/discounts by submitting a publication using this product:
www.novusbio.com/publications

