

Product Datasheet

VSIG3/IGSF11 Antibody (OTI2H1)

NBP2-46046

Unit Size: 0.1 ml

Store at -20C. Avoid freeze-thaw cycles.

www.novusbio.com



technical@novusbio.com

Protocols, Publications, Related Products, Reviews, Research Tools and Images at:
www.novusbio.com/NBP2-46046

Updated 9/9/2025 v.20.1

Earn rewards for product
reviews and publications.

Submit a publication at www.novusbio.com/publications

Submit a review at www.novusbio.com/reviews/destination/NBP2-46046



NBP2-46046

VSIG3/IGSF11 Antibody (OTI2H1)

Product Information

Unit Size	0.1 ml
Concentration	1 mg/ml
Storage	Store at -20C. Avoid freeze-thaw cycles.
Clonality	Monoclonal
Clone	OTI2H1
Preservative	0.02% Sodium Azide
Isotype	IgG1
Purity	Immunogen affinity purified
Buffer	PBS (pH 7.3), 1.0% BSA and 50% Glycerol

Product Description

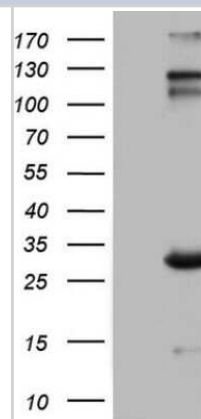
Description	Novus Biologicals Mouse VSIG3/IGSF11 Antibody (OTI2H1) (NBP2-46046) is a monoclonal antibody validated for use in IHC and WB. All Novus Biologicals antibodies are covered by our 100% guarantee.
Host	Mouse
Gene ID	152404
Gene Symbol	IGSF11
Species	Human, Mouse, Rat
Reactivity Notes	Please note that this antibody is reactive to Mouse and derived from the same host, Mouse. Mouse-On-Mouse blocking reagent may be needed for IHC and ICC experiments to reduce high background signal. You can find these reagents under catalog numbers PK-2200-NB and MP-2400-NB. Please contact Technical Support if you have any questions.
Immunogen	Human recombinant protein fragment corresponding to amino acids 23-241 of human IGSF11 (NP_689751) produced in E.coli.

Product Application Details

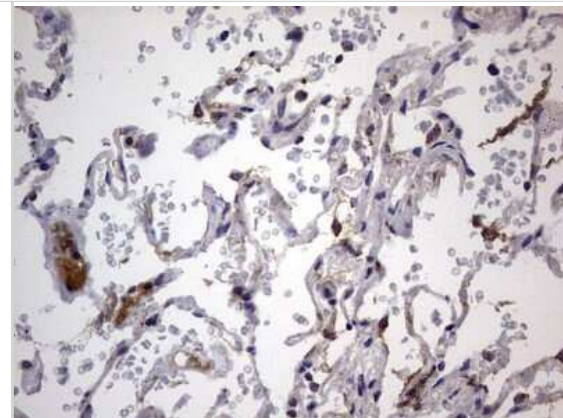
Applications	Western Blot, Immunohistochemistry-Paraffin, Immunohistochemistry
Recommended Dilutions	Western Blot 1:2000, Immunohistochemistry 1:150, Immunohistochemistry-Paraffin 1:150

Images

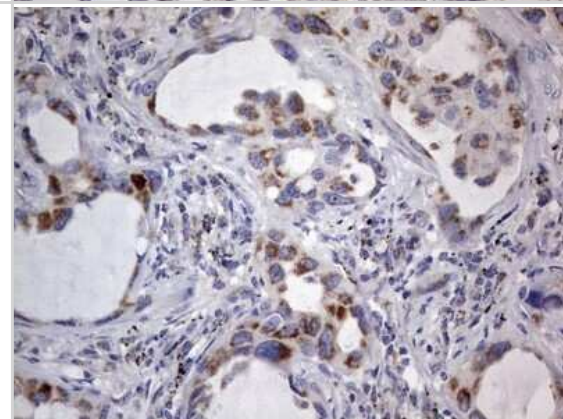
Western Blot: VSIG3/IGSF11 Antibody (OTI2H1) [NBP2-46046] - Analysis of HEK293T cells were transfected with the pCMV6-ENTRY control (Left lane) or pCMV6-ENTRY IGSF11 .



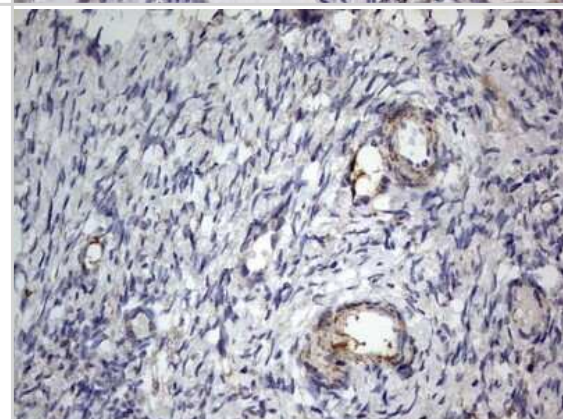
Immunohistochemistry: VSIG3/IGSF11 Antibody (OTI2H1) [NBP2-46046] - Analysis of Human lung tissue.



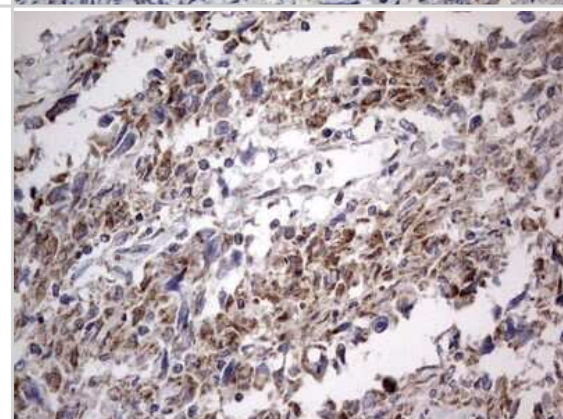
Immunohistochemistry: VSIG3/IGSF11 Antibody (OTI2H1) [NBP2-46046] - Analysis of Carcinoma of Human lung tissue using IGSF11 mouse monoclonal antibody. Dilution: 1:150



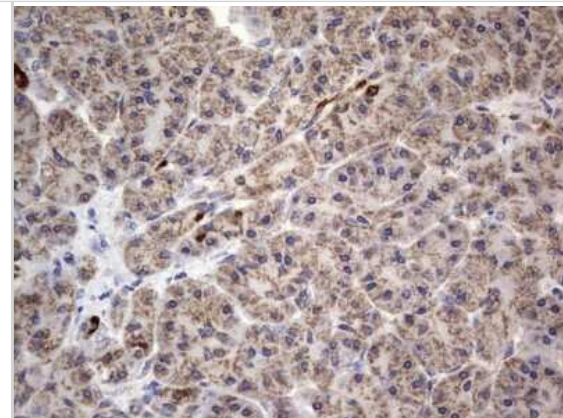
Immunohistochemistry: VSIG3/IGSF11 Antibody (OTI2H1) [NBP2-46046] - Analysis of Human Ovary tissue. Dilution: 1:150



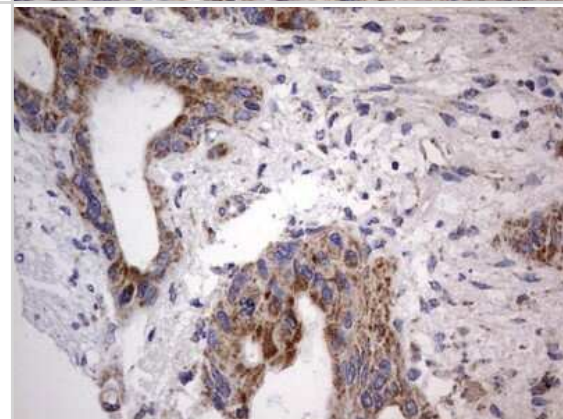
Immunohistochemistry: VSIG3/IGSF11 Antibody (OTI2H1) [NBP2-46046] - Analysis of Adenocarcinoma of Human ovary tissue.



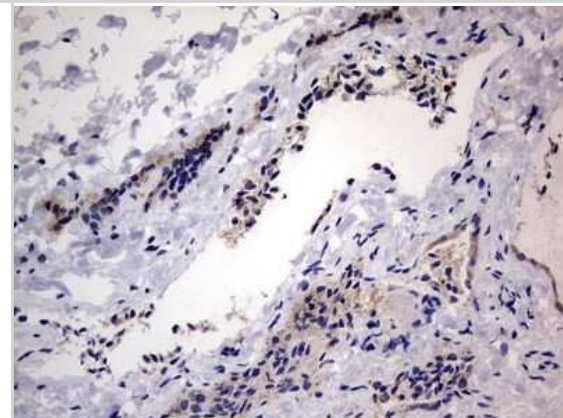
Immunohistochemistry: VSIG3/IGSF11 Antibody (OTI2H1) [NBP2-46046] - Analysis of Human pancreas tissue. Dilution: 1:150



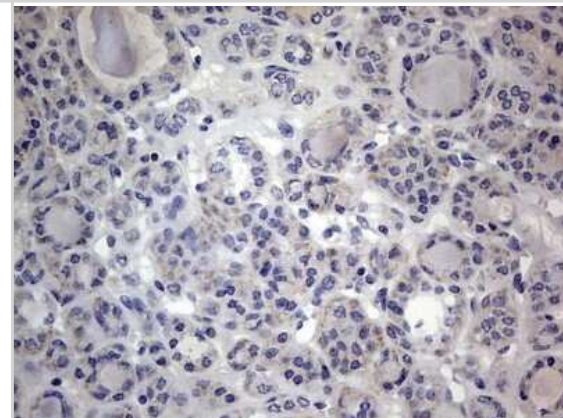
Immunohistochemistry: VSIG3/IGSF11 Antibody (OTI2H1) [NBP2-46046] - Analysis of Carcinoma of Human pancreas tissue.



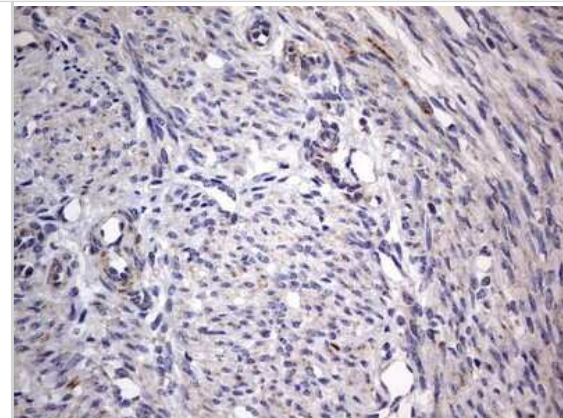
Immunohistochemistry: VSIG3/IGSF11 Antibody (OTI2H1) [NBP2-46046] - Analysis of Human thyroid tissue. Dilution: 1:150



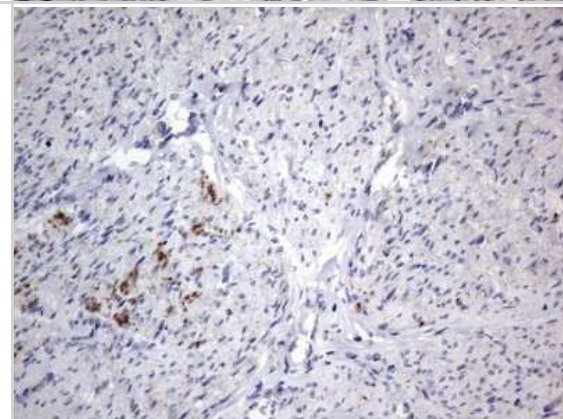
Immunohistochemistry: VSIG3/IGSF11 Antibody (OTI2H1) [NBP2-46046] - Analysis of Carcinoma of Human thyroid tissue.



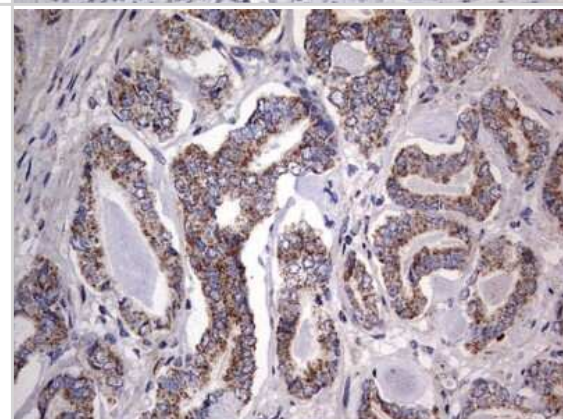
Immunohistochemistry: VSIG3/IGSF11 Antibody (OTI2H1) [NBP2-46046] - Analysis of Human endometrium tissue.



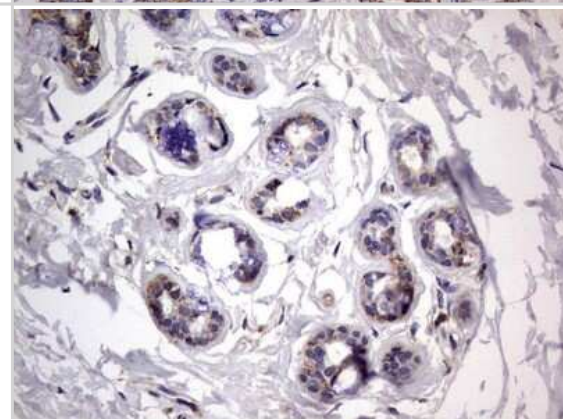
Immunohistochemistry: VSIG3/IGSF11 Antibody (OTI2H1) [NBP2-46046] - Analysis of Adenocarcinoma of Human endometrium tissue.



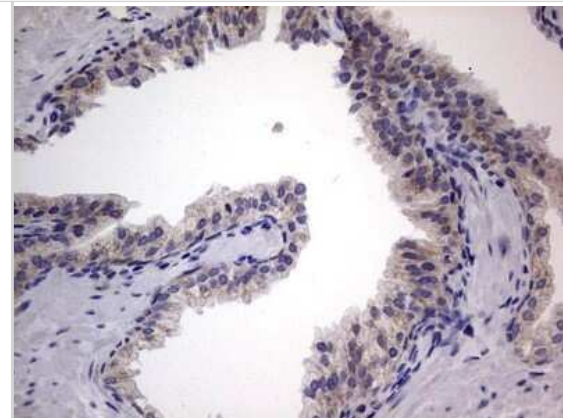
Immunohistochemistry: VSIG3/IGSF11 Antibody (OTI2H1) [NBP2-46046] - Analysis of Human prostate tissue.



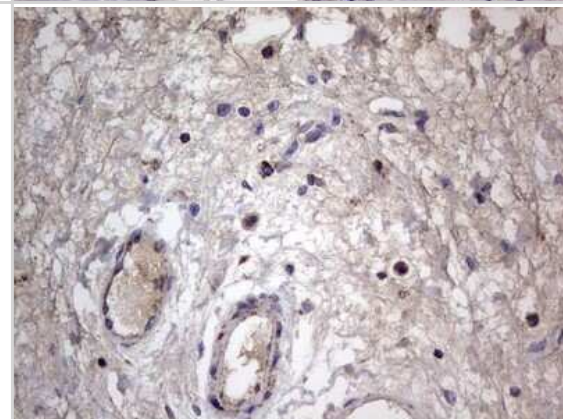
Immunohistochemistry: VSIG3/IGSF11 Antibody (OTI2H1) [NBP2-46046] - Analysis of Human breast tissue.



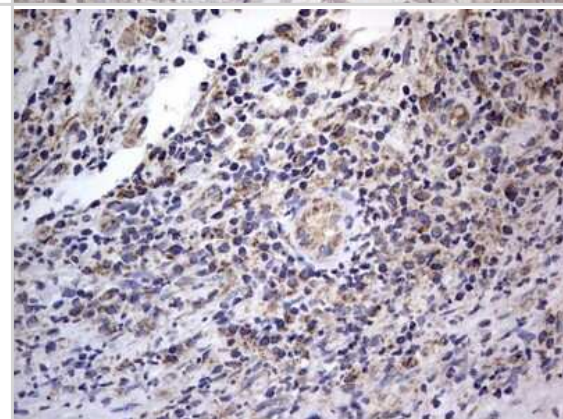
Immunohistochemistry: VSIG3/IGSF11 Antibody (OTI2H1) [NBP2-46046] - Analysis of Carcinoma of Human prostate tissue.



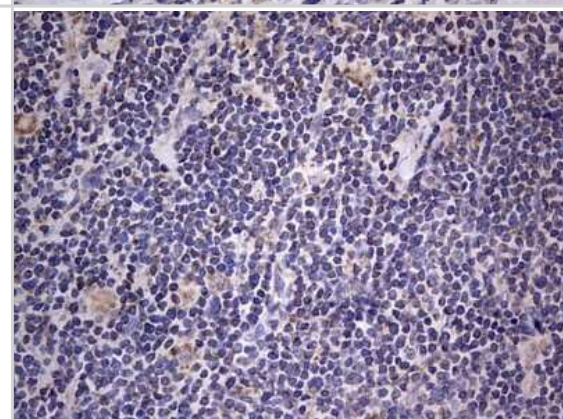
Immunohistochemistry: VSIG3/IGSF11 Antibody (OTI2H1) [NBP2-46046] - Analysis of Human bladder tissue.



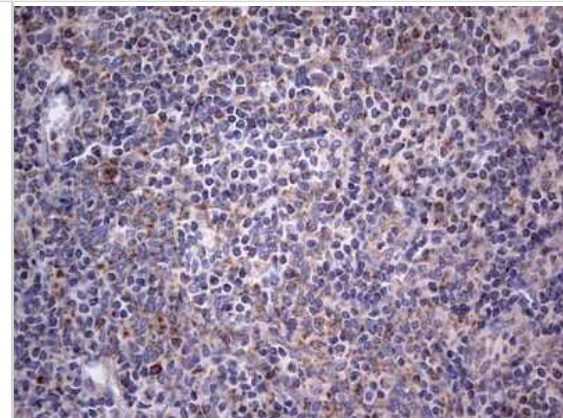
Immunohistochemistry: VSIG3/IGSF11 Antibody (OTI2H1) [NBP2-46046] - Analysis of Human lymph node tissue.



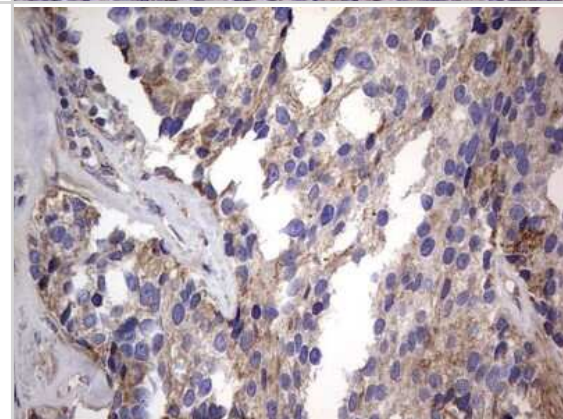
Immunohistochemistry: VSIG3/IGSF11 Antibody (OTI2H1) [NBP2-46046] - Analysis of Human lymphoma tissue.



Immunohistochemistry: VSIG3/IGSF11 Antibody (OTI2H1) [NBP2-46046] - Analysis of Human tonsil tissue.



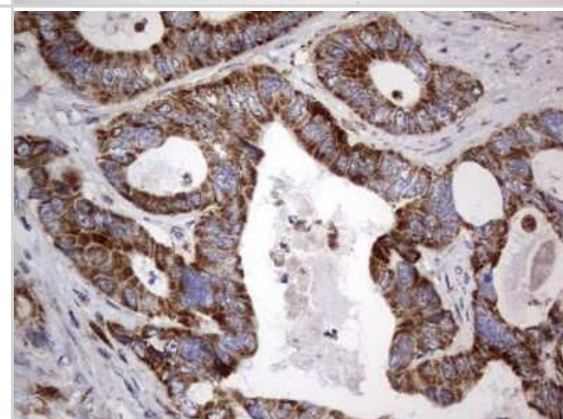
Immunohistochemistry: VSIG3/IGSF11 Antibody (OTI2H1) [NBP2-46046] - Analysis of Adenocarcinoma of Human breast tissue.



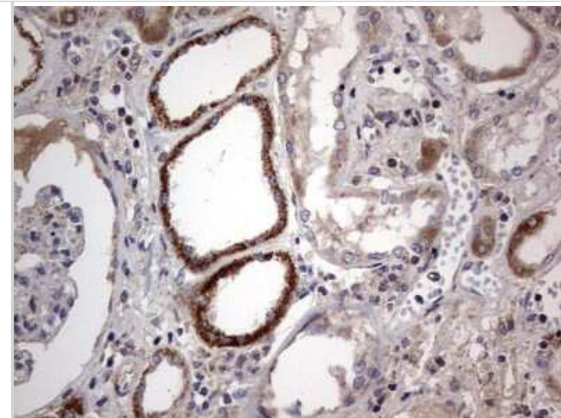
Immunohistochemistry: VSIG3/IGSF11 Antibody (OTI2H1) [NBP2-46046] - Analysis of Human colon tissue.



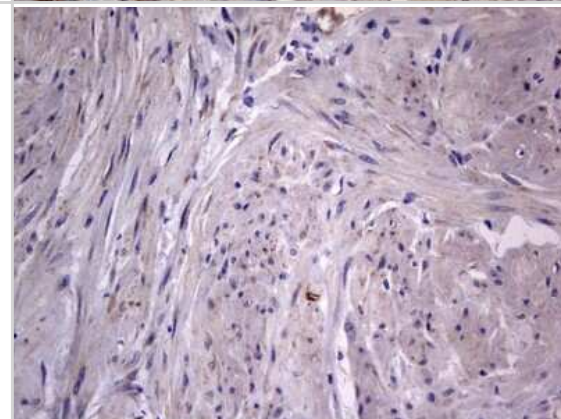
Immunohistochemistry: VSIG3/IGSF11 Antibody (OTI2H1) [NBP2-46046] - Analysis of Adenocarcinoma of Human colon tissue.



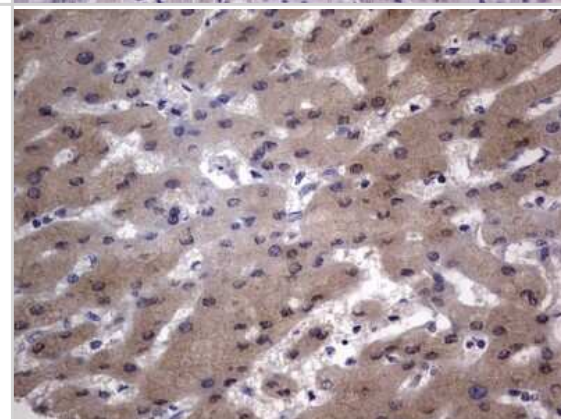
Immunohistochemistry: VSIG3/IGSF11 Antibody (OTI2H1) [NBP2-46046] - Analysis of Human Kidney tissue.



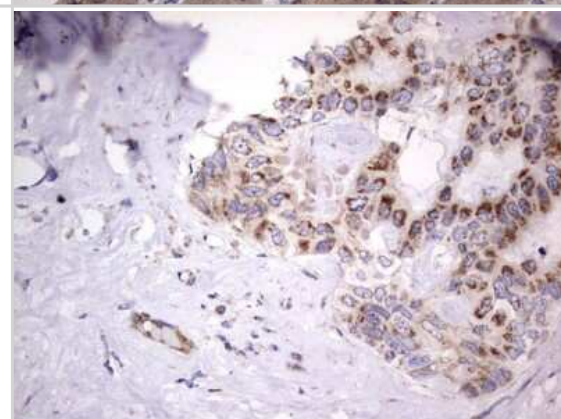
Immunohistochemistry: VSIG3/IGSF11 Antibody (OTI2H1) [NBP2-46046] - Analysis of Carcinoma of Human kidney tissue.



Immunohistochemistry: VSIG3/IGSF11 Antibody (OTI2H1) [NBP2-46046] - Analysis of Human liver tissue.



Immunohistochemistry: VSIG3/IGSF11 Antibody (OTI2H1) [NBP2-46046] - Analysis of Carcinoma of Human liver tissue.





Novus Biologicals USA

10730 E. Briarwood Avenue
Centennial, CO 80112
USA
Phone: 303.730.1950
Toll Free: 1.888.506.6887
Fax: 303.730.1966
nb-customerservice@bio-techne.com

Bio-Techne Canada

21 Canmotor Ave
Toronto, ON M8Z 4E6
Canada
Phone: 905.827.6400
Toll Free: 855.668.8722
Fax: 905.827.6402
canada.inquires@bio-techne.com

Bio-Techne Ltd

19 Barton Lane
Abingdon Science Park
Abingdon, OX14 3NB, United Kingdom
Phone: (44) (0) 1235 529449
Free Phone: 0800 37 34 15
Fax: (44) (0) 1235 533420
info.EMEA@bio-techne.com

General Contact Information

www.novusbio.com
Technical Support: nb-technical@bio-techne.com
Orders: nb-customerservice@bio-techne.com
General: novus@novusbio.com

Products Related to NBP2-46046

HAF007	Goat anti-Mouse IgG Secondary Antibody [HRP]
NB720-B	Rabbit anti-Mouse IgG (H+L) Secondary Antibody [Biotin]
NBP1-97005-0.5mg	Mouse IgG1 Isotype Control (MG1)
NBP1-92021PEP	VSIG3/IGSF11 Recombinant Protein Antigen

Limitations

This product is for research use only and is not approved for use in humans or in clinical diagnosis. Primary Antibodies are guaranteed for 1 year from date of receipt.

For more information on our 100% guarantee, please visit www.novusbio.com/guarantee

Earn gift cards/discounts by submitting a review: www.novusbio.com/reviews/submit/NBP2-46046

Earn gift cards/discounts by submitting a publication using this product:
www.novusbio.com/publications

