

Product Datasheet

MMACHC Antibody (OTI1A4)

NBP2-45884

Unit Size: 0.1 ml

Store at -20C. Avoid freeze-thaw cycles.

www.novusbio.com



technical@novusbio.com

Protocols, Publications, Related Products, Reviews, Research Tools and Images at:
www.novusbio.com/NBP2-45884

Updated 5/22/2022 v.20.1

Earn rewards for product
reviews and publications.

Submit a publication at www.novusbio.com/publications

Submit a review at www.novusbio.com/reviews/destination/NBP2-45884



NBP2-45884

MMACHC Antibody (OT11A4)

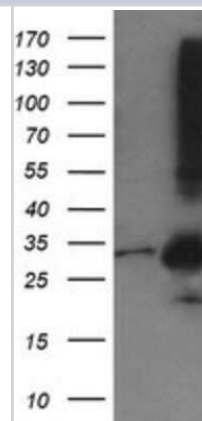
Product Information	
Unit Size	0.1 ml
Concentration	1 mg/ml
Storage	Store at -20C. Avoid freeze-thaw cycles.
Clonality	Monoclonal
Clone	OT11A4
Preservative	0.02% Sodium Azide
Isotype	IgG1
Purity	Immunogen affinity purified
Buffer	PBS (pH 7.3), 1.0% BSA and 50% Glycerol
Target Molecular Weight	31.5 kDa

Product Description	
Host	Mouse
Gene ID	25974
Gene Symbol	MMACHC
Species	Human
Immunogen	Full length human recombinant protein of human MMACHC(NP_056321) produced in HEK293T cell.

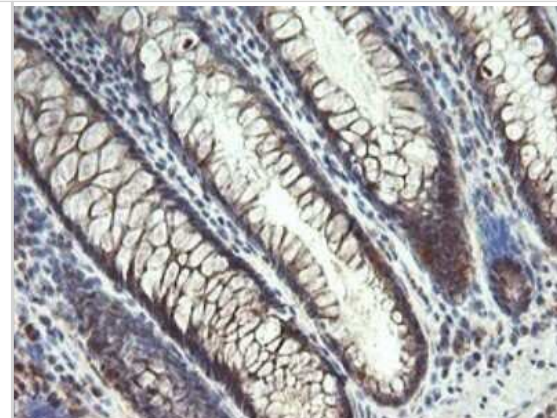
Product Application Details	
Applications	Western Blot, Flow Cytometry, Immunocytochemistry/ Immunofluorescence, Immunohistochemistry, Immunohistochemistry-Paraffin, Immunofluorescence
Recommended Dilutions	Western Blot 1:2000, Flow Cytometry 1:100, Immunohistochemistry 1:150, Immunocytochemistry/ Immunofluorescence 1:100, Immunohistochemistry-Paraffin 1:150, Immunofluorescence 1:100

Images

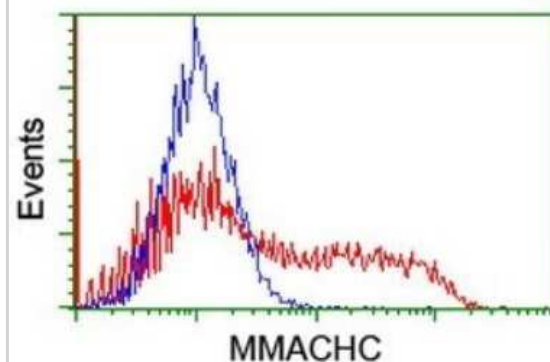
Western Blot: MMACHC Antibody (OT11A4) [NBP2-45884] - HEK293T cells were transfected with the pCMV6-ENTRY control (Left lane) or pCMV6-ENTRY MMACHC cDNA for 48 hrs and lysed. Equivalent amounts of cell lysates (5 ug per lane) were separated by SDS-PAGE and immunoblotted with anti-MMACHC.



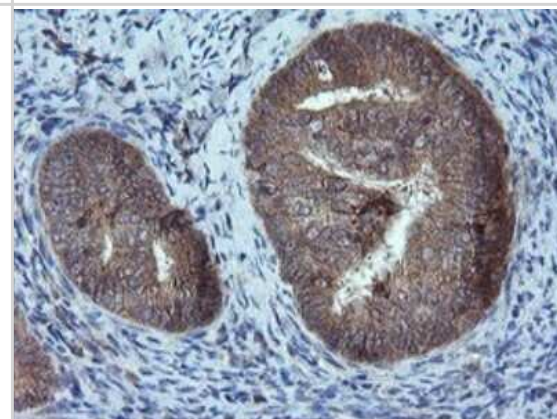
Immunohistochemistry: MMACHC Antibody (OT11A4) [NBP2-45884] - Analysis of Human colon tissue.



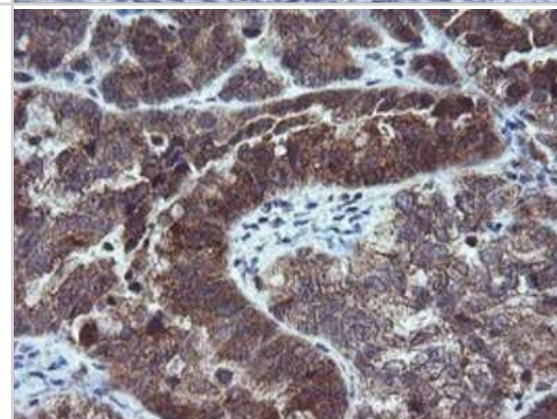
Flow Cytometry: MMACHC Antibody (OT11A4) [NBP2-45884] - Analysis of HEK293T cells transfected with either overexpress plasmid(Red) or empty vector control plasmid(Blue) were immunostained by MMACHC antibody.



Immunohistochemistry: MMACHC Antibody (OT11A4) [NBP2-45884] - Analysis of Adenocarcinoma of Human endometrium tissue.



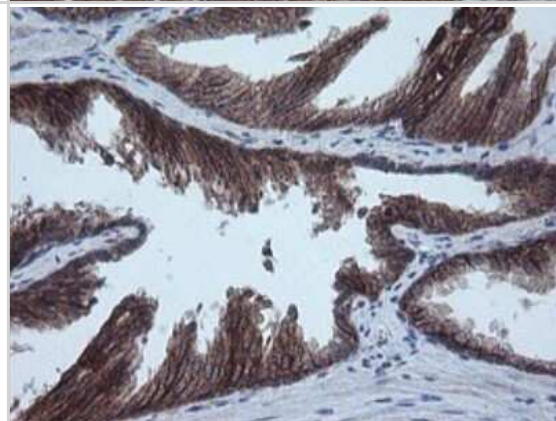
Immunohistochemistry: MMACHC Antibody (OT11A4) [NBP2-45884] - Analysis of Adenocarcinoma of Human ovary tissue.



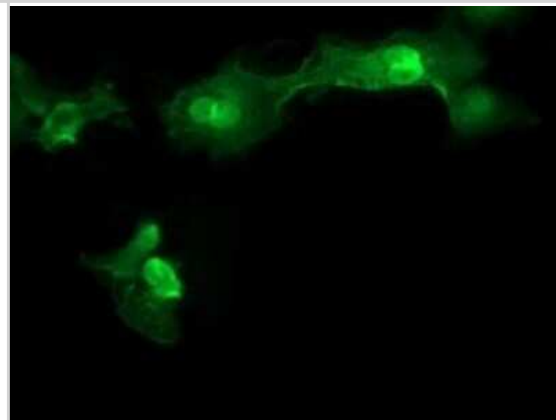
Immunohistochemistry: MMACHC Antibody (OTI1A4) [NBP2-45884] - Analysis of Human liver tissue.



Immunohistochemistry: MMACHC Antibody (OTI1A4) [NBP2-45884] - Analysis of Human prostate tissue.



Immunofluorescence: MMACHC Antibody (OTI1A4) [NBP2-45884] - Analysis of COS7 cells transiently transfected by pCMV6-ENTRY MMACHC.





Novus Biologicals USA

10730 E. Briarwood Avenue
Centennial, CO 80112
USA
Phone: 303.730.1950
Toll Free: 1.888.506.6887
Fax: 303.730.1966
nb-customerservice@bio-techne.com

Bio-Techne Canada

21 Canmotor Ave
Toronto, ON M8Z 4E6
Canada
Phone: 905.827.6400
Toll Free: 855.668.8722
Fax: 905.827.6402
canada.inquires@bio-techne.com

Bio-Techne Ltd

19 Barton Lane
Abingdon Science Park
Abingdon, OX14 3NB, United Kingdom
Phone: (44) (0) 1235 529449
Free Phone: 0800 37 34 15
Fax: (44) (0) 1235 533420
info.EMEA@bio-techne.com

General Contact Information

www.novusbio.com
Technical Support: nb-technical@bio-techne.com
Orders: nb-customerservice@bio-techne.com
General: novus@novusbio.com

Products Related to NBP2-45884

HAF007	Goat anti-Mouse IgG Secondary Antibody [HRP]
NB720-B	Rabbit anti-Mouse IgG (H+L) Secondary Antibody [Biotin]
NBP1-97005-0.5mg	Mouse IgG1 Isotype Control (MG1)
NBP1-98954-100ug	Recombinant Human MMACHC His Protein

Limitations

This product is for research use only and is not approved for use in humans or in clinical diagnosis. Primary Antibodies are guaranteed for 1 year from date of receipt.

For more information on our 100% guarantee, please visit www.novusbio.com/guarantee

Earn gift cards/discounts by submitting a review: www.novusbio.com/reviews/submit/NBP2-45884

Earn gift cards/discounts by submitting a publication using this product:
www.novusbio.com/publications

