

# Product Datasheet

## MEF2D Antibody (OTI1E11)

### NBP2-45812

Unit Size: 0.1 ml

Store at -20C. Avoid freeze-thaw cycles.

[www.novusbio.com](http://www.novusbio.com)



[technical@novusbio.com](mailto:technical@novusbio.com)

Reviews: 1

Protocols, Publications, Related Products, Reviews, Research Tools and Images at:  
[www.novusbio.com/NBP2-45812](http://www.novusbio.com/NBP2-45812)

Updated 10/23/2024 v.20.1

Earn rewards for product  
reviews and publications.

Submit a publication at [www.novusbio.com/publications](http://www.novusbio.com/publications)

Submit a review at [www.novusbio.com/reviews/destination/NBP2-45812](http://www.novusbio.com/reviews/destination/NBP2-45812)



**NBP2-45812**

MEF2D Antibody (OTI1E11)

**Product Information**

|                                |  |
|--------------------------------|--|
| <b>Unit Size</b>               | 0.1 ml                                   |
| <b>Concentration</b>           | 1 mg/ml                                  |
| <b>Storage</b>                 | Store at -20C. Avoid freeze-thaw cycles. |
| <b>Clonality</b>               | Monoclonal                               |
| <b>Clone</b>                   | OTI1E11                                  |
| <b>Preservative</b>            | 0.02% Sodium Azide                       |
| <b>Isotype</b>                 | IgG1                                     |
| <b>Purity</b>                  | Immunogen affinity purified              |
| <b>Buffer</b>                  | PBS (pH 7.3), 1.0% BSA and 50% Glycerol  |
| <b>Target Molecular Weight</b> | 55.8 kDa                                 |

**Product Description**

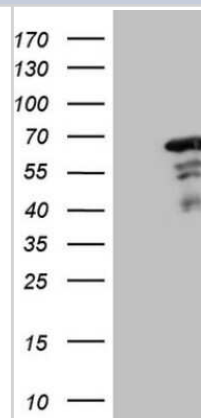
|                         |   |
|-------------------------|---|
| <b>Host</b>             | Mouse   |
| <b>Gene ID</b>          | 4209  |
| <b>Gene Symbol</b>      | MEF2D   |
| <b>Species</b>          | Human, Mouse, Rat   |
| <b>Reactivity Notes</b> | Please note that this antibody is reactive to Mouse and derived from the same host, Mouse. Mouse-On-Mouse blocking reagent may be needed for IHC and ICC experiments to reduce high background signal. You can find these reagents under catalog numbers PK-2200-NB and MP-2400-NB. Please contact Technical Support if you have any questions. |
| <b>Immunogen</b>        | Human recombinant protein fragment corresponding to amino acids 1-282 of human MEF2D(NP_005911) produced in E.coli.   |

**Product Application Details**

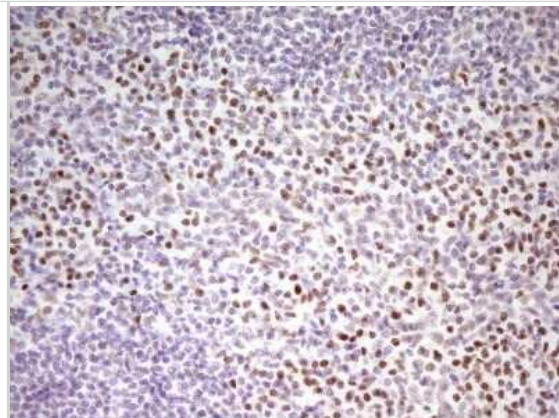
|                              |   |
|------------------------------|---|
| <b>Applications</b>          | Western Blot, ELISA, Immunohistochemistry, Immunohistochemistry-Paraffin              |
| <b>Recommended Dilutions</b> | Western Blot 1:2000, ELISA, Immunohistochemistry 1:150, Immunohistochemistry-Paraffin |

**Images**

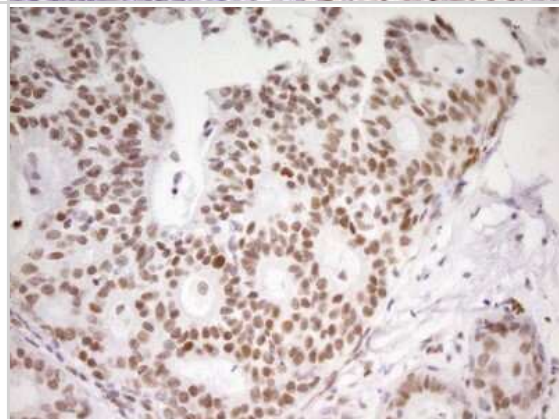
Western Blot: MEF2D Antibody (1E11) [NBP2-45812] - Analysis of HEK293T cells were transfected with the pCMV6-ENTRY control (Left lane) or pCMV6-ENTRY MEF2D.



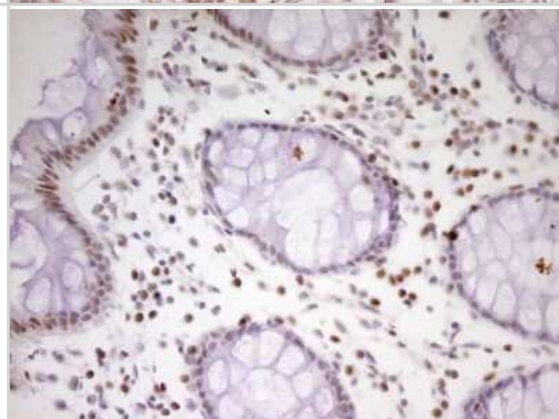
Immunohistochemistry: MEF2D Antibody (1E11) [NBP2-45812] -  
Analysis of Human tonsil tissue. (Heat-induced epitope retrieval by 1 mM  
EDTA in 10mM Tris, pH8.5, 120C for 3min)



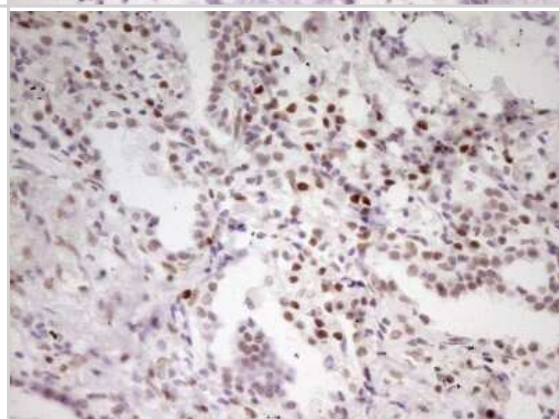
Immunohistochemistry: MEF2D Antibody (1E11) [NBP2-45812] -  
Analysis of Adenocarcinoma of Human breast tissue. (Heat-induced  
epitope retrieval by 1 mM EDTA in 10mM Tris, pH8.5, 120C for 3min)



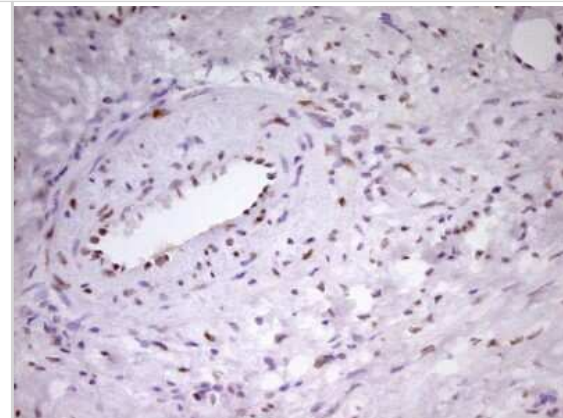
Immunohistochemistry: MEF2D Antibody (1E11) [NBP2-45812] -  
Analysis of Human colon tissue. (Heat-induced epitope retrieval by 1 mM  
EDTA in 10mM Tris, pH8.5, 120C for 3min)



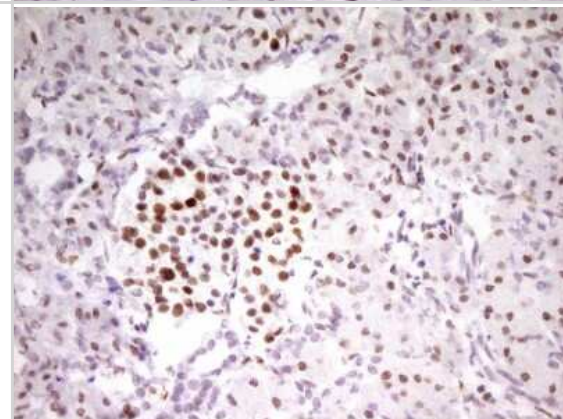
Immunohistochemistry: MEF2D Antibody (1E11) [NBP2-45812] -  
Analysis of Carcinoma of Human lung tissue. (Heat-induced epitope  
retrieval by 1 mM EDTA in 10mM Tris, pH8.5, 120C for 3min)



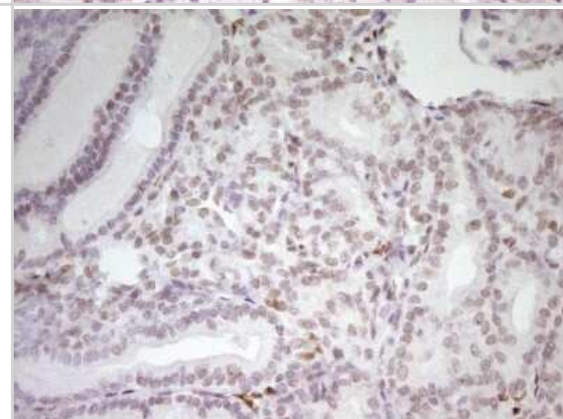
Immunohistochemistry: MEF2D Antibody (1E11) [NBP2-45812] -  
Analysis of Human Ovary tissue. (Heat-induced epitope retrieval by 1  
mM EDTA in 10mM Tris, pH8.5, 120C for 3min)



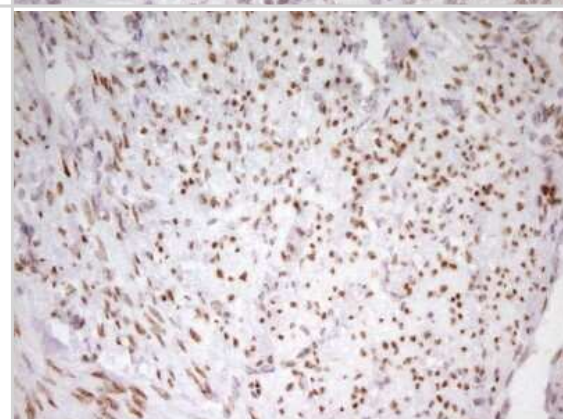
Immunohistochemistry: MEF2D Antibody (1E11) [NBP2-45812] -  
Analysis of Human pancreas tissue. (Heat-induced epitope retrieval by 1  
mM EDTA in 10mM Tris, pH8.5, 120C for 3min)



Immunohistochemistry: MEF2D Antibody (1E11) [NBP2-45812] -  
Analysis of Carcinoma of Human thyroid tissue. (Heat-induced epitope  
retrieval by 1 mM EDTA in 10mM Tris, pH8.5, 120C for 3min)

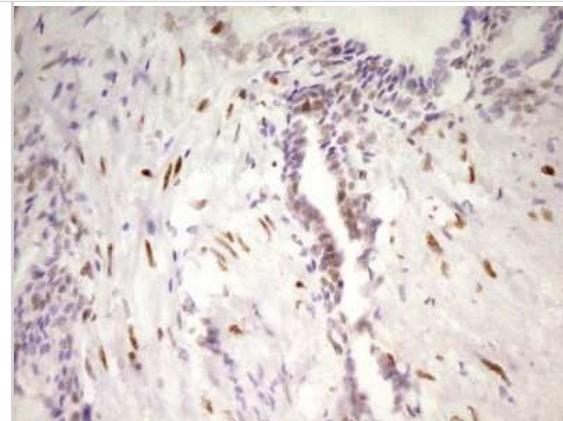


Immunohistochemistry: MEF2D Antibody (1E11) [NBP2-45812] -  
Analysis of Human endometrium tissue. (Heat-induced epitope retrieval  
by 1 mM EDTA in 10mM Tris, pH8.5, 120C for 3min)

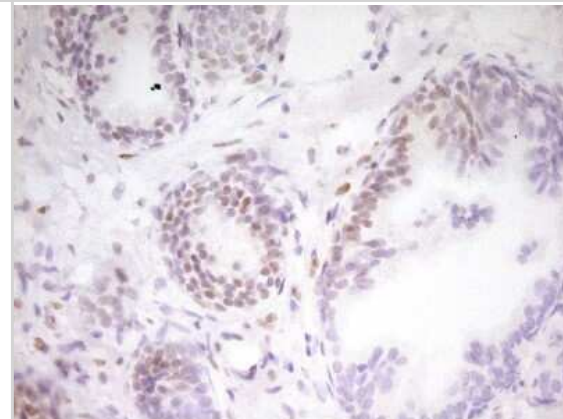




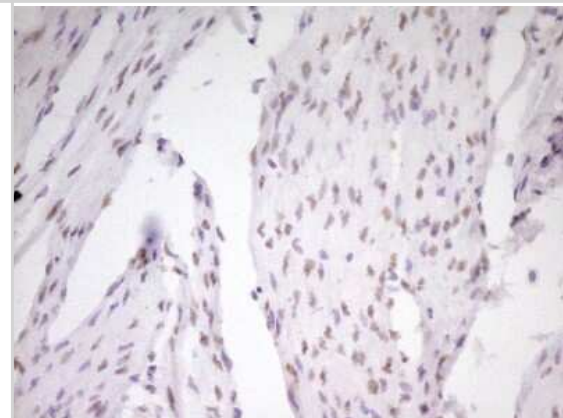
Immunohistochemistry: MEF2D Antibody (1E11) [NBP2-45812] -  
Analysis of Human prostate tissue. (Heat-induced epitope retrieval by 1  
mM EDTA in 10mM Tris, pH8.5, 120C for 3min)



Immunohistochemistry: MEF2D Antibody (1E11) [NBP2-45812] -  
Analysis of Carcinoma of Human prostate tissue. (Heat-induced epitope  
retrieval by 1 mM EDTA in 10mM Tris, pH8.5, 120C for 3min)



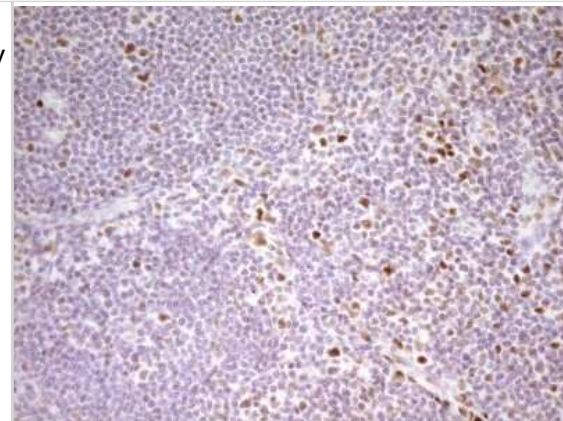
Immunohistochemistry: MEF2D Antibody (1E11) [NBP2-45812] -  
Analysis of Human bladder tissue. (Heat-induced epitope retrieval by 1  
mM EDTA in 10mM Tris, pH8.5, 120C for 3min)



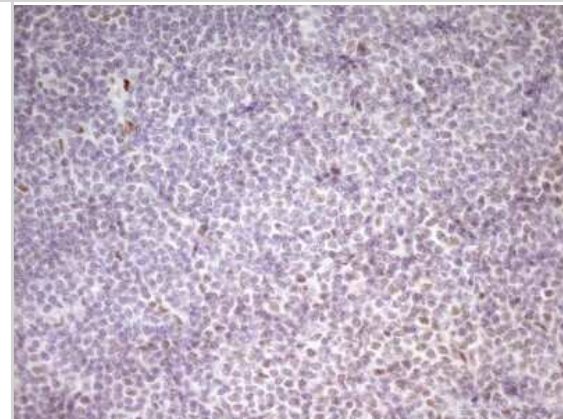
Immunohistochemistry: MEF2D Antibody (1E11) [NBP2-45812] -  
Analysis of Carcinoma of Human bladder tissue. (Heat-induced epitope  
retrieval by 1 mM EDTA in 10mM Tris, pH8.5, 120C for 3min)



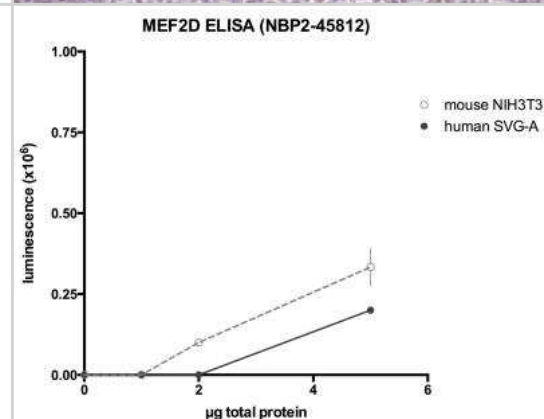
Immunohistochemistry: MEF2D Antibody (1E11) [NBP2-45812] - Analysis of Human lymph node tissue. (Heat-induced epitope retrieval by 1 mM EDTA in 10mM Tris, pH8.5, 120C for 3min)



Immunohistochemistry: MEF2D Antibody (1E11) [NBP2-45812] - Analysis of Human lymphoma tissue. (Heat-induced epitope retrieval by 1 mM EDTA in 10mM Tris, pH8.5, 120C for 3min)



ELISA: MEF2D Antibody (OT11E11) [NBP2-45812] - Lysates from NIH3T3 and SVG-A cells assessed by ELISA, loading the indicated mass of total protein per well. Antibody was diluted 1:250, and used in conjunction with an HRP-conjugated secondary antibody. Signal was detected by luminescence. Image from verified customer review.





### **Novus Biologicals USA**

10730 E. Briarwood Avenue  
Centennial, CO 80112  
USA  
Phone: 303.730.1950  
Toll Free: 1.888.506.6887  
Fax: 303.730.1966  
nb-customerservice@bio-techne.com

### **Bio-Techne Canada**

21 Canmotor Ave  
Toronto, ON M8Z 4E6  
Canada  
Phone: 905.827.6400  
Toll Free: 855.668.8722  
Fax: 905.827.6402  
canada.inquires@bio-techne.com

### **Bio-Techne Ltd**

19 Barton Lane  
Abingdon Science Park  
Abingdon, OX14 3NB, United Kingdom  
Phone: (44) (0) 1235 529449  
Free Phone: 0800 37 34 15  
Fax: (44) (0) 1235 533420  
info.EMEA@bio-techne.com

### **General Contact Information**

www.novusbio.com  
Technical Support: nb-technical@bio-techne.com  
Orders: nb-customerservice@bio-techne.com  
General: novus@novusbio.com

### **Products Related to NBP2-45812**

|                    |   |
|--------------------|---|
| HAF007             | Goat anti-Mouse IgG Secondary Antibody [HRP]            |
| NB720-B            | Rabbit anti-Mouse IgG (H+L) Secondary Antibody [Biotin] |
| NBP1-97005-0.5mg   | Mouse IgG1 Isotype Control (MG1)                        |
| H00004209-P01-10ug | Recombinant Human MEF2D GST (N-Term) Protein            |

### **Limitations**

This product is for research use only and is not approved for use in humans or in clinical diagnosis. Primary Antibodies are guaranteed for 1 year from date of receipt.

For more information on our 100% guarantee, please visit [www.novusbio.com/guarantee](http://www.novusbio.com/guarantee)

Earn gift cards/discounts by submitting a review: [www.novusbio.com/reviews/submit/NBP2-45812](http://www.novusbio.com/reviews/submit/NBP2-45812)

Earn gift cards/discounts by submitting a publication using this product:  
[www.novusbio.com/publications](http://www.novusbio.com/publications)

