

Product Datasheet

CLEC4E Antibody (OTI2A8)

NBP2-45629

Unit Size: 0.1 ml

Store at -20C. Avoid freeze-thaw cycles.

www.novusbio.com



technical@novusbio.com

Protocols, Publications, Related Products, Reviews, Research Tools and Images at:
www.novusbio.com/NBP2-45629

Updated 10/23/2024 v.20.1

Earn rewards for product
reviews and publications.

Submit a publication at www.novusbio.com/publications

Submit a review at www.novusbio.com/reviews/destination/NBP2-45629



NBP2-45629

CLEC4E Antibody (OTI2A8)

Product Information

Unit Size	0.1 ml
Concentration	1 mg/ml
Storage	Store at -20C. Avoid freeze-thaw cycles.
Clonality	Monoclonal
Clone	OTI2A8
Preservative	0.02% Sodium Azide
Isotype	IgG1
Purity	Immunogen affinity purified
Buffer	PBS (pH 7.3), 1.0% BSA and 50% Glycerol
Target Molecular Weight	24.9 kDa

Product Description

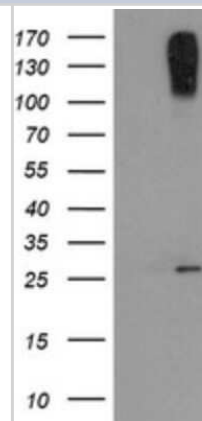
Host	Mouse
Gene ID	26253
Gene Symbol	CLEC4E
Species	Human
Immunogen	Full length human recombinant protein of human CLEC4E(NP_055173) produced in HEK293T cell.

Product Application Details

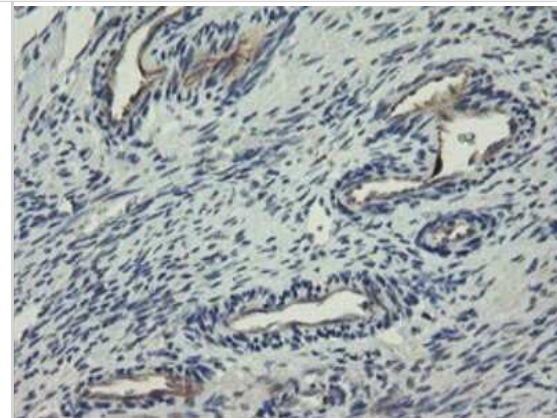
Applications	Western Blot, Flow Cytometry, Immunohistochemistry, Immunohistochemistry-Paraffin
Recommended Dilutions	Western Blot 1:2000, Flow Cytometry 1:100, Immunohistochemistry 1:150, Immunohistochemistry-Paraffin 1:150

Images

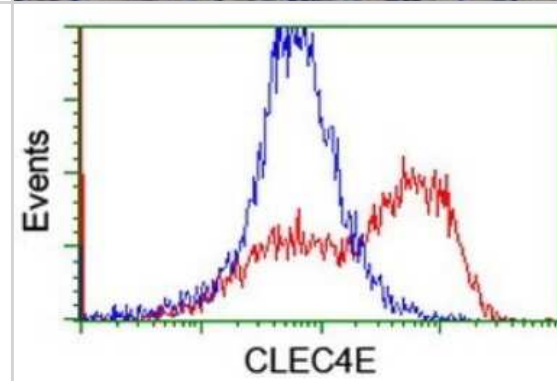
Western Blot: CLEC4E Antibody (2A8) [NBP2-45629] - Analysis of HEK293T cells were transfected with the pCMV6-ENTRY control (Left lane) or pCMV6-ENTRY CLEC4E.



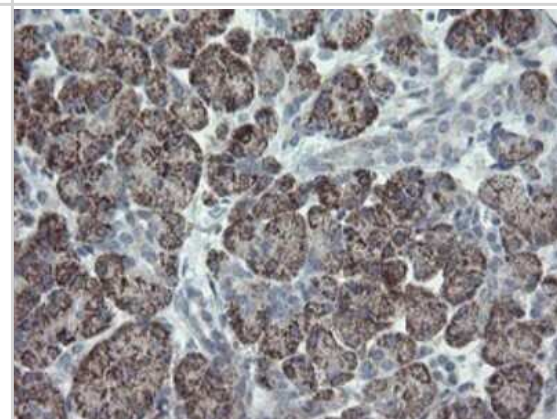
Immunohistochemistry: CLEC4E Antibody (2A8) [NBP2-45629] - Analysis of Human Ovary tissue.



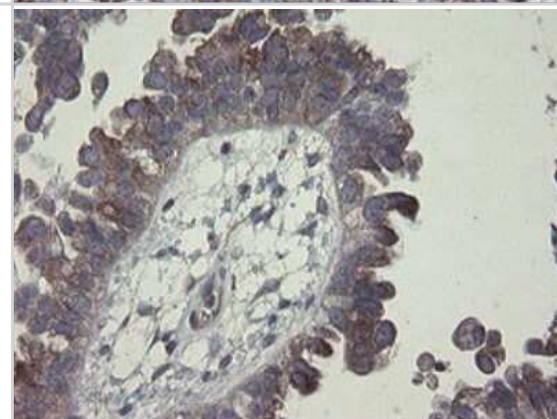
Flow Cytometry: CLEC4E Antibody (2A8) [NBP2-45629] - Analysis of HEK293T cells transfected with either RC200244 overexpress plasmid (Red) or empty vector control plasmid (Blue) were immunostained by CLEC4E antibody, and then analyzed by flow cytometry.



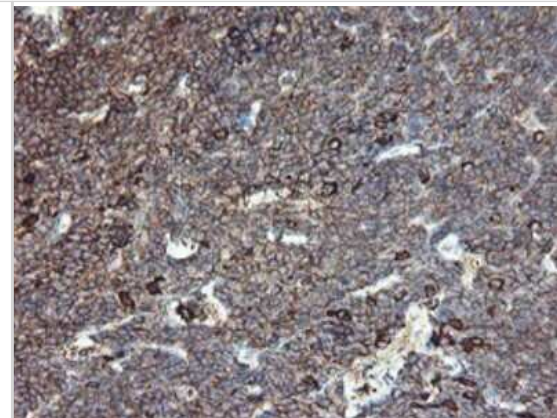
Immunohistochemistry: CLEC4E Antibody (2A8) [NBP2-45629] - Analysis of Human pancreas tissue.



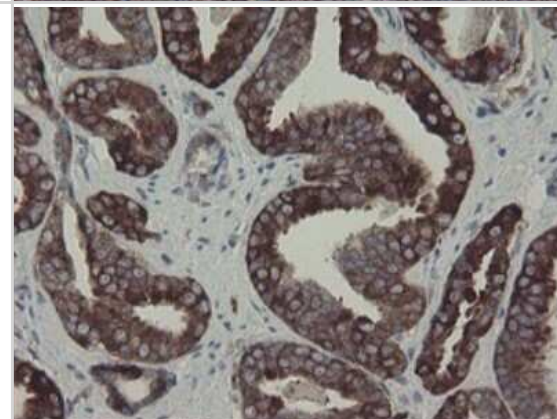
Immunohistochemistry: CLEC4E Antibody (2A8) [NBP2-45629] - Analysis of Adenocarcinoma of Human ovary tissue.



Immunohistochemistry: CLEC4E Antibody (2A8) [NBP2-45629] -
Analysis of Human lymphoma tissue.



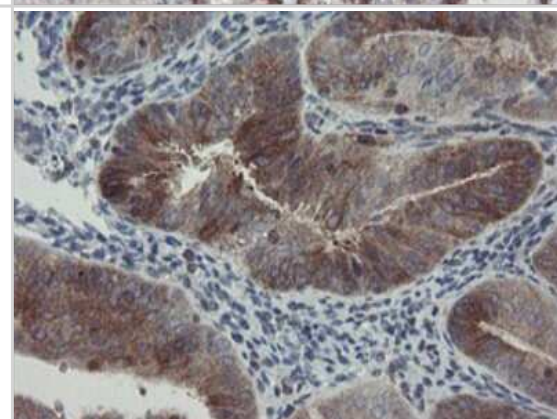
Immunohistochemistry: CLEC4E Antibody (2A8) [NBP2-45629] -
Analysis of Carcinoma of Human prostate tissue.



Immunohistochemistry: CLEC4E Antibody (2A8) [NBP2-45629] -
Analysis of Human Kidney tissue.



Immunohistochemistry: CLEC4E Antibody (2A8) [NBP2-45629] -
Analysis of Adenocarcinoma of Human endometrium tissue.





Novus Biologicals USA

10730 E. Briarwood Avenue
Centennial, CO 80112
USA
Phone: 303.730.1950
Toll Free: 1.888.506.6887
Fax: 303.730.1966
nb-customerservice@bio-techne.com

Bio-Techne Canada

21 Canmotor Ave
Toronto, ON M8Z 4E6
Canada
Phone: 905.827.6400
Toll Free: 855.668.8722
Fax: 905.827.6402
canada.inquires@bio-techne.com

Bio-Techne Ltd

19 Barton Lane
Abingdon Science Park
Abingdon, OX14 3NB, United Kingdom
Phone: (44) (0) 1235 529449
Free Phone: 0800 37 34 15
Fax: (44) (0) 1235 533420
info.EMEA@bio-techne.com

General Contact Information

www.novusbio.com
Technical Support: nb-technical@bio-techne.com
Orders: nb-customerservice@bio-techne.com
General: novus@novusbio.com

Products Related to NBP2-45629

HAF007	Goat anti-Mouse IgG Secondary Antibody [HRP]
NB720-B	Rabbit anti-Mouse IgG (H+L) Secondary Antibody [Biotin]
NBP1-97005-0.5mg	Mouse IgG1 Isotype Control (MG1)
NBP2-52028-0.1mg	Recombinant Human CLEC4E His Protein

Limitations

This product is for research use only and is not approved for use in humans or in clinical diagnosis. Primary Antibodies are guaranteed for 1 year from date of receipt.

For more information on our 100% guarantee, please visit www.novusbio.com/guarantee

Earn gift cards/discounts by submitting a review: www.novusbio.com/reviews/submit/NBP2-45629

Earn gift cards/discounts by submitting a publication using this product:
www.novusbio.com/publications

