

Product Datasheet

RFC2 Antibody (OTI2B2) NBP2-45570

Unit Size: 0.1 ml

Store at -20C. Avoid freeze-thaw cycles.

www.novusbio.com



technical@novusbio.com

Protocols, Publications, Related Products, Reviews, Research Tools and Images at:
www.novusbio.com/NBP2-45570

Updated 10/23/2024 v.20.1

Earn rewards for product
reviews and publications.

Submit a publication at www.novusbio.com/publications

Submit a review at www.novusbio.com/reviews/destination/NBP2-45570



NBP2-45570

RFC2 Antibody (OTI2B2)

Product Information

Unit Size	0.1 ml
Concentration	1 mg/ml
Storage	Store at -20C. Avoid freeze-thaw cycles.
Clonality	Monoclonal
Clone	OTI2B2
Preservative	0.02% Sodium Azide
Isotype	IgG1
Purity	Immunogen affinity purified
Buffer	PBS (pH 7.3), 1.0% BSA and 50% Glycerol
Target Molecular Weight	35.1 kDa

Product Description

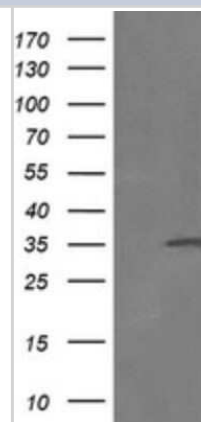
Host	Mouse
Gene ID	5982
Gene Symbol	RFC2
Species	Human, Mouse, Rat
Reactivity Notes	Please note that this antibody is reactive to Mouse and derived from the same host, Mouse. Mouse-On-Mouse blocking reagent may be needed for IHC and ICC experiments to reduce high background signal. You can find these reagents under catalog numbers PK-2200-NB and MP-2400-NB. Please contact Technical Support if you have any questions.
Immunogen	Human recombinant protein fragment corresponding to amino acids 1-234 of human RFC2(NP_002905) produced in E.coli.

Product Application Details

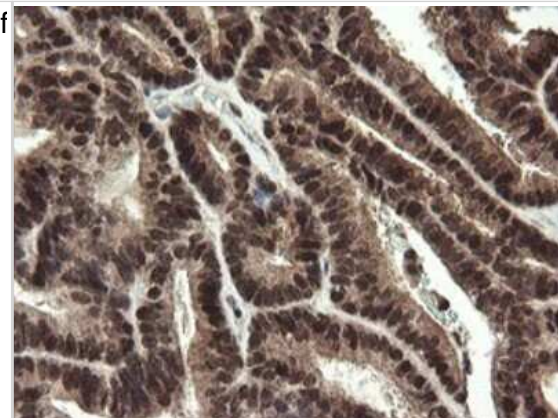
Applications	Western Blot, Flow Cytometry, Immunohistochemistry
Recommended Dilutions	Western Blot 1:2000, Flow Cytometry 1:100, Immunohistochemistry 1:150

Images

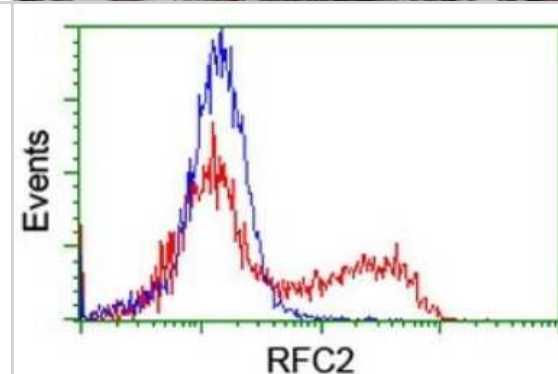
Western Blot: RFC2 Antibody (2B2) [NBP2-45570] - Analysis of HEK293T cells were transfected with the pCMV6-ENTRY control (Left lane) or pCMV6-ENTRY RFC2.



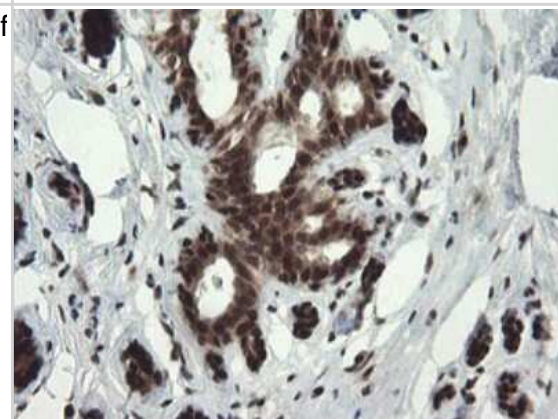
Immunohistochemistry: RFC2 Antibody (2B2) [NBP2-45570] - Analysis of Adenocarcinoma of Human endometrium tissue.



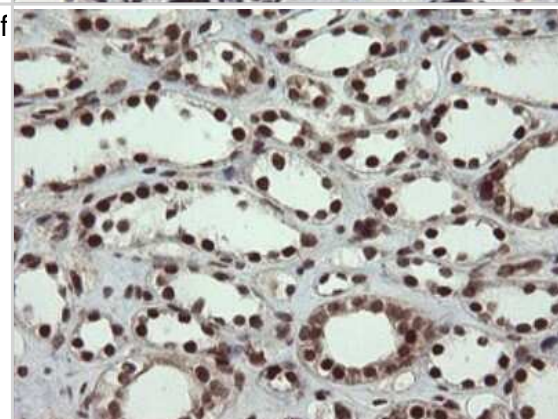
Flow Cytometry: RFC2 Antibody (2B2) [NBP2-45570] - Analysis of HEK293T cells transfected with either overexpress plasmid(Red) or empty vector control plasmid(Blue) were immunostained by RFC2 antibody.



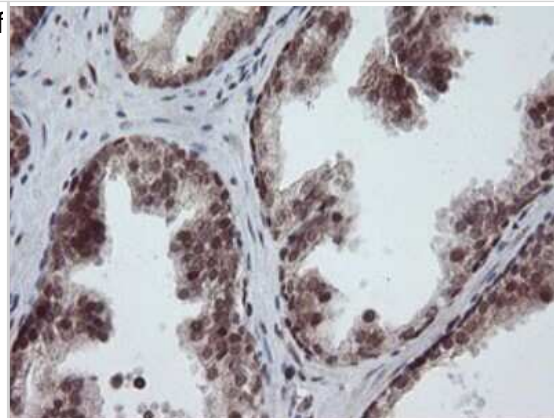
Immunohistochemistry: RFC2 Antibody (2B2) [NBP2-45570] - Analysis of Human breast tissue.



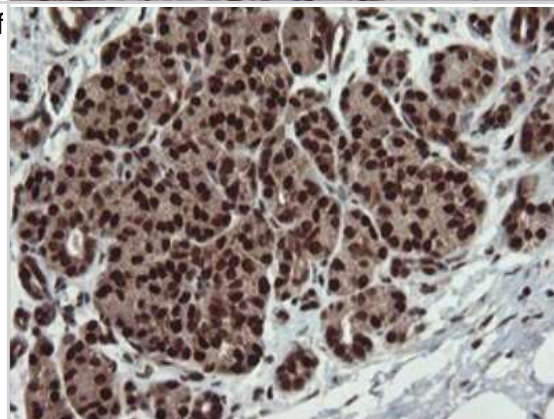
Immunohistochemistry: RFC2 Antibody (2B2) [NBP2-45570] - Analysis of Human Kidney tissue.



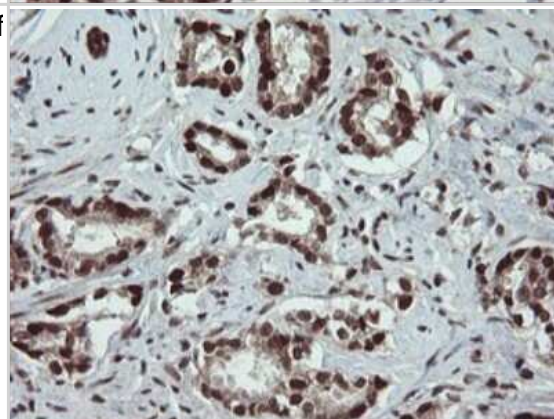
Immunohistochemistry: RFC2 Antibody (2B2) [NBP2-45570] - Analysis of Human prostate tissue.



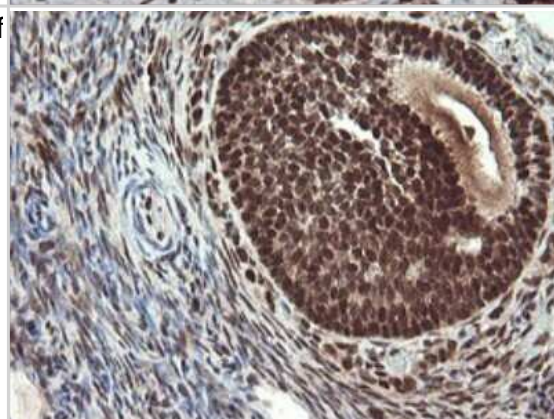
Immunohistochemistry: RFC2 Antibody (2B2) [NBP2-45570] - Analysis of Human pancreas tissue.



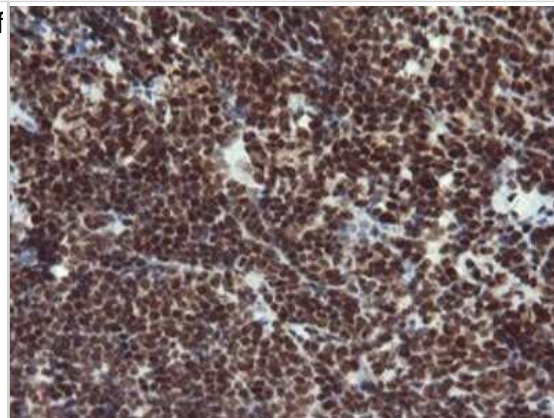
Immunohistochemistry: RFC2 Antibody (2B2) [NBP2-45570] - Analysis of Carcinoma of Human prostate tissue.



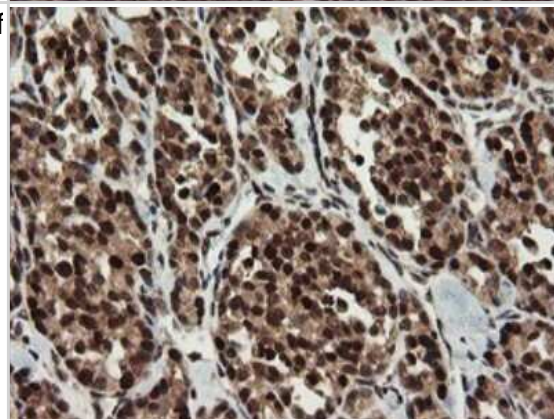
Immunohistochemistry: RFC2 Antibody (2B2) [NBP2-45570] - Analysis of Human Ovary tissue.



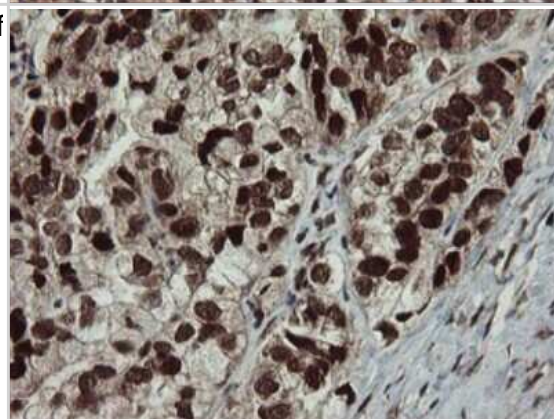
Immunohistochemistry: RFC2 Antibody (2B2) [NBP2-45570] - Analysis of Human lymphoma tissue.



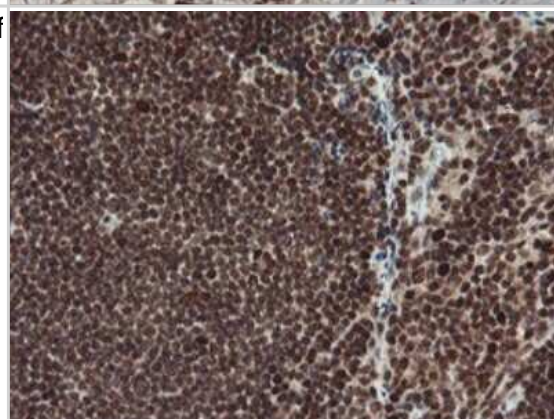
Immunohistochemistry: RFC2 Antibody (2B2) [NBP2-45570] - Analysis of Carcinoma of Human thyroid tissue.



Immunohistochemistry: RFC2 Antibody (2B2) [NBP2-45570] - Analysis of Adenocarcinoma of Human ovary tissue.



Immunohistochemistry: RFC2 Antibody (2B2) [NBP2-45570] - Analysis of Human tonsil tissue.





Novus Biologicals USA

10730 E. Briarwood Avenue
Centennial, CO 80112
USA
Phone: 303.730.1950
Toll Free: 1.888.506.6887
Fax: 303.730.1966
nb-customerservice@bio-techne.com

Bio-Techne Canada

21 Canmotor Ave
Toronto, ON M8Z 4E6
Canada
Phone: 905.827.6400
Toll Free: 855.668.8722
Fax: 905.827.6402
canada.inquires@bio-techne.com

Bio-Techne Ltd

19 Barton Lane
Abingdon Science Park
Abingdon, OX14 3NB, United Kingdom
Phone: (44) (0) 1235 529449
Free Phone: 0800 37 34 15
Fax: (44) (0) 1235 533420
info.EMEA@bio-techne.com

General Contact Information

www.novusbio.com
Technical Support: nb-technical@bio-techne.com
Orders: nb-customerservice@bio-techne.com
General: novus@novusbio.com

Products Related to NBP2-45570

HAF007	Goat anti-Mouse IgG Secondary Antibody [HRP]
NB720-B	Rabbit anti-Mouse IgG (H+L) Secondary Antibody [Biotin]
NBP1-97005-0.5mg	Mouse IgG1 Isotype Control (MG1)
H00005982-P01-10ug	Recombinant Human RFC2 GST (N-Term) Protein

Limitations

This product is for research use only and is not approved for use in humans or in clinical diagnosis. Primary Antibodies are guaranteed for 1 year from date of receipt.

For more information on our 100% guarantee, please visit www.novusbio.com/guarantee

Earn gift cards/discounts by submitting a review: www.novusbio.com/reviews/submit/NBP2-45570

Earn gift cards/discounts by submitting a publication using this product:
www.novusbio.com/publications

