

Product Datasheet

UBE2J1 Antibody (OTI3D1)

NBP2-45402

Unit Size: 0.1 ml

Store at -20C. Avoid freeze-thaw cycles.

www.novusbio.com



technical@novusbio.com

Protocols, Publications, Related Products, Reviews, Research Tools and Images at:
www.novusbio.com/NBP2-45402

Updated 9/9/2025 v.20.1

Earn rewards for product
reviews and publications.

Submit a publication at www.novusbio.com/publications

Submit a review at www.novusbio.com/reviews/destination/NBP2-45402



NBP2-45402

UBE2J1 Antibody (OTI3D1)

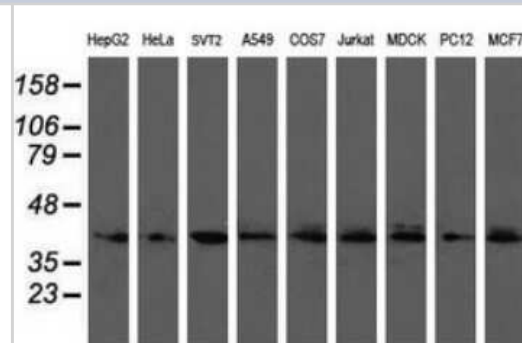
Product Information	
Unit Size	0.1 ml
Concentration	1 mg/ml
Storage	Store at -20C. Avoid freeze-thaw cycles.
Clonality	Monoclonal
Clone	OTI3D1
Preservative	0.02% Sodium Azide
Isotype	IgG2a
Purity	Immunogen affinity purified
Buffer	PBS (pH 7.3), 1.0% BSA and 50% Glycerol
Target Molecular Weight	35 kDa

Product Description	
Description	Novus Biologicals Mouse UBE2J1 Antibody (OTI3D1) (NBP2-45402) is a monoclonal antibody validated for use in IHC, WB and Flow. All Novus Biologicals antibodies are covered by our 100% guarantee.
Host	Mouse
Gene ID	51465
Gene Symbol	UBE2J1
Species	Human, Mouse, Rat, Canine, Monkey
Reactivity Notes	Please note that this antibody is reactive to Mouse and derived from the same host, Mouse. Mouse-On-Mouse blocking reagent may be needed for IHC and ICC experiments to reduce high background signal. You can find these reagents under catalog numbers PK-2200-NB and MP-2400-NB. Please contact Technical Support if you have any questions.
Immunogen	Full length human recombinant protein of human UBE2J1(NP_057105) produced in HEK293T cell.

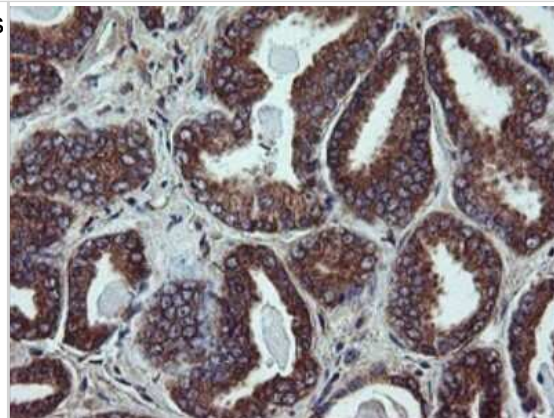
Product Application Details	
Applications	Western Blot, Immunohistochemistry-Paraffin, Flow Cytometry, Immunohistochemistry
Recommended Dilutions	Western Blot 1:500-2000, Flow Cytometry 1:100, Immunohistochemistry 1:150, Immunohistochemistry-Paraffin

Images

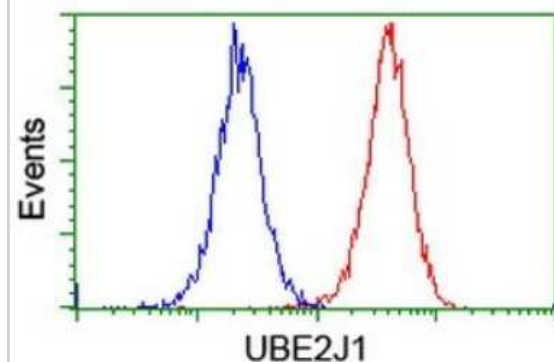
Western Blot: UBE2J1 Antibody (3D1) [NBP2-45402] - Analysis of extracts (35ug) from 9 different cell lines (HepG2: human; HeLa: human; SVT2: mouse; A549: human; COS7: monkey; Jurkat: human; MDCK: canine; PC12: rat; MCF7: human).



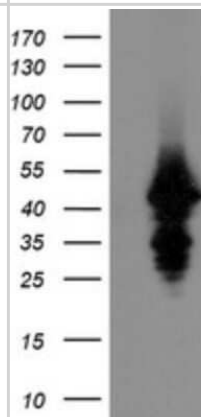
Immunohistochemistry: UBE2J1 Antibody (3D1) [NBP2-45402] - Analysis of Carcinoma of Human prostate tissue.



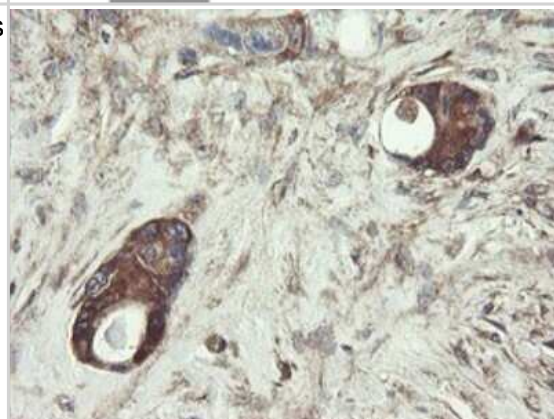
Flow Cytometry: UBE2J1 Antibody (3D1) [NBP2-45402] - Analysis of Jurkat cells, using UBE2J1 antibody (Red), compared to a nonspecific negative control antibody (Blue).



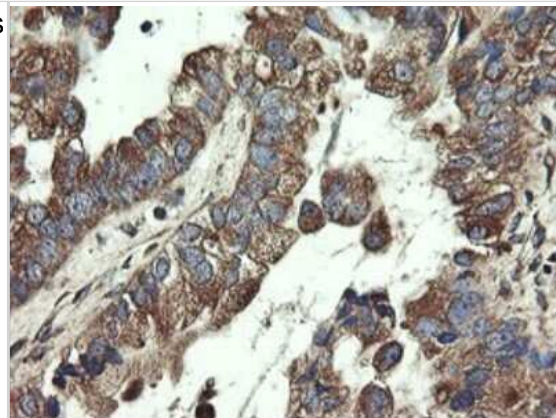
Western Blot: UBE2J1 Antibody (3D1) [NBP2-45402] - Analysis of HEK293T cells were transfected with the pCMV6-ENTRY control (Left lane) or pCMV6-ENTRY UBE2J1.



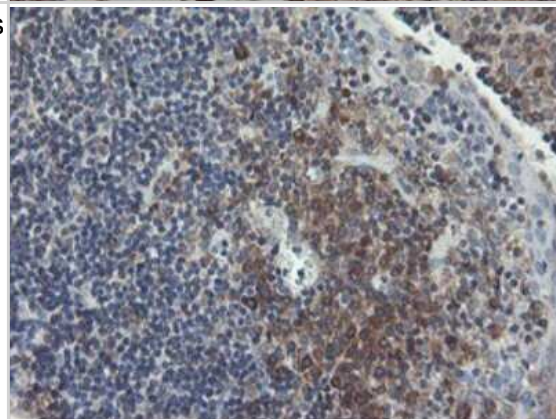
Immunohistochemistry: UBE2J1 Antibody (3D1) [NBP2-45402] - Analysis of Adenocarcinoma of Human colon tissue.



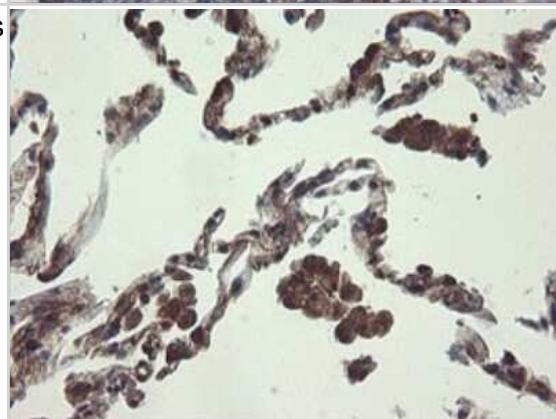
Immunohistochemistry: UBE2J1 Antibody (3D1) [NBP2-45402] - Analysis of Adenocarcinoma of Human ovary tissue.



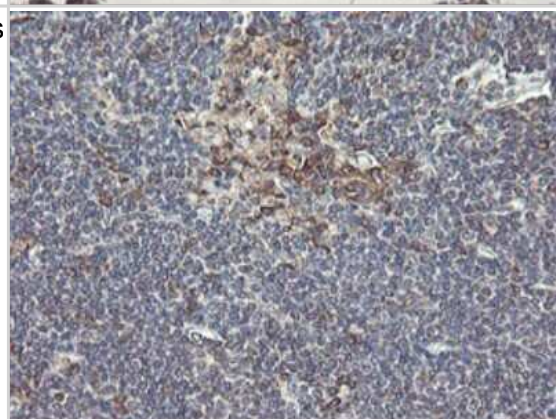
Immunohistochemistry: UBE2J1 Antibody (3D1) [NBP2-45402] - Analysis of Human tonsil tissue.



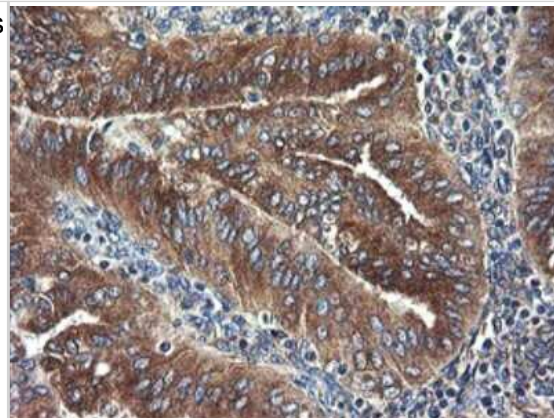
Immunohistochemistry: UBE2J1 Antibody (3D1) [NBP2-45402] - Analysis of Human lung tissue.



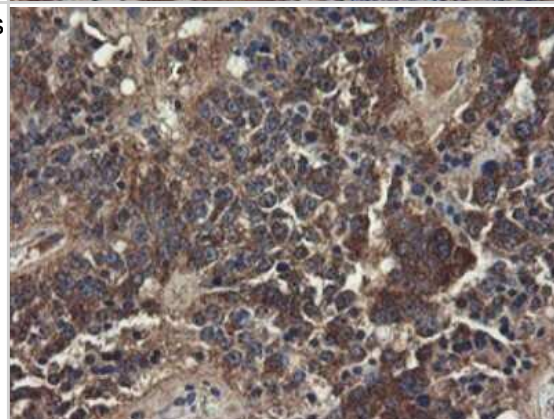
Immunohistochemistry: UBE2J1 Antibody (3D1) [NBP2-45402] - Analysis of Human lymphoma tissue.



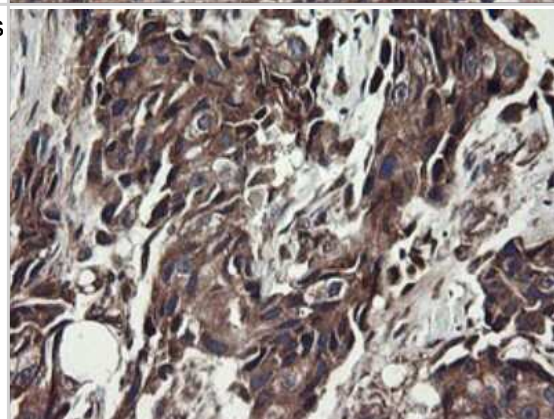
Immunohistochemistry: UBE2J1 Antibody (3D1) [NBP2-45402] - Analysis of Adenocarcinoma of Human endometrium tissue.



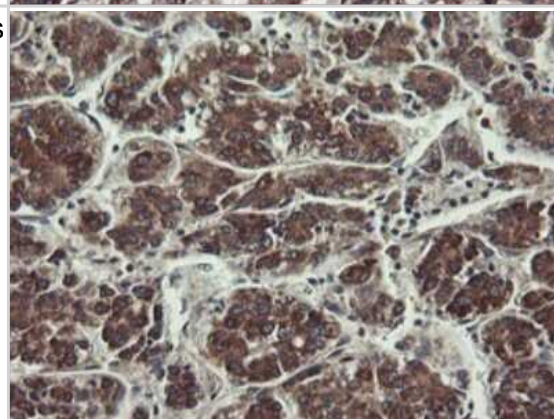
Immunohistochemistry: UBE2J1 Antibody (3D1) [NBP2-45402] - Analysis of Carcinoma of Human pancreas tissue.



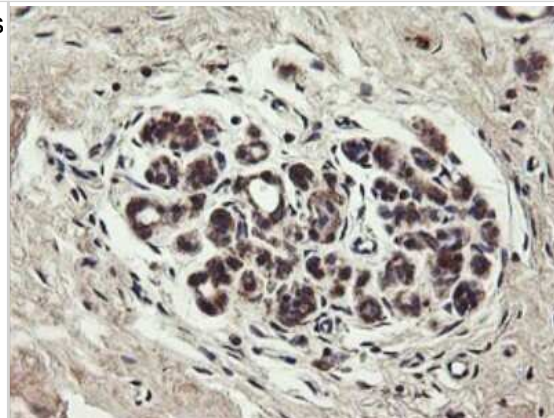
Immunohistochemistry: UBE2J1 Antibody (3D1) [NBP2-45402] - Analysis of Adenocarcinoma of Human breast tissue.



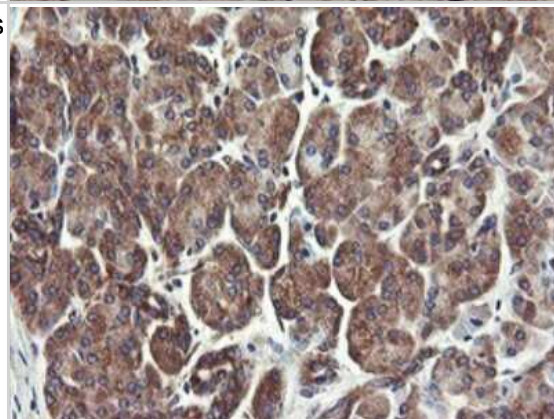
Immunohistochemistry: UBE2J1 Antibody (3D1) [NBP2-45402] - Analysis of Carcinoma of Human liver tissue.



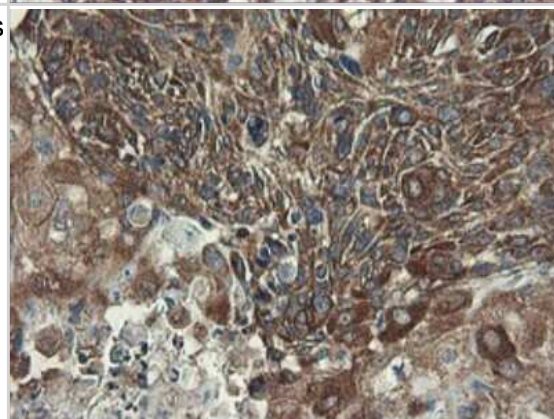
Immunohistochemistry: UBE2J1 Antibody (3D1) [NBP2-45402] - Analysis of Human breast tissue.




Immunohistochemistry: UBE2J1 Antibody (3D1) [NBP2-45402] - Analysis of Human pancreas tissue.



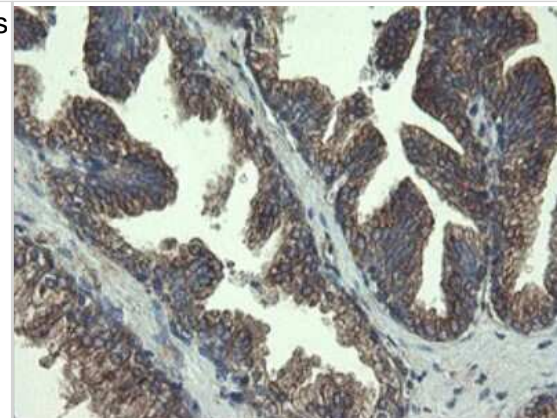
Immunohistochemistry: UBE2J1 Antibody (3D1) [NBP2-45402] - Analysis of Carcinoma of Human lung tissue.



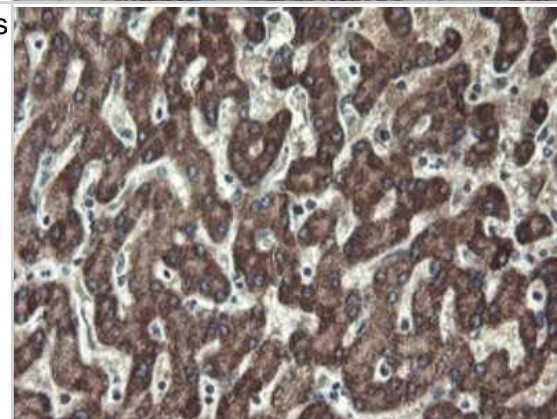
Immunohistochemistry: UBE2J1 Antibody (3D1) [NBP2-45402] - Analysis of Human Kidney tissue. 



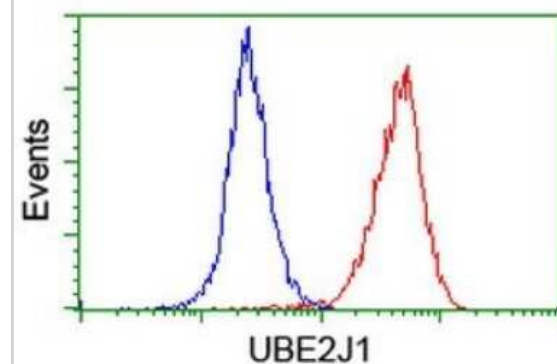
Immunohistochemistry: UBE2J1 Antibody (3D1) [NBP2-45402] - Analysis of Human prostate tissue.



Immunohistochemistry: UBE2J1 Antibody (3D1) [NBP2-45402] - Analysis of Human liver tissue.



Flow Cytometry: UBE2J1 Antibody (3D1) [NBP2-45402] - Analysis of Hela cells, using UBE2J1 antibody (Red), compared to a nonspecific negative control antibody (Blue).





Novus Biologicals USA

10730 E. Briarwood Avenue
Centennial, CO 80112
USA
Phone: 303.730.1950
Toll Free: 1.888.506.6887
Fax: 303.730.1966
nb-customerservice@bio-techne.com

Bio-Techne Canada

21 Canmotor Ave
Toronto, ON M8Z 4E6
Canada
Phone: 905.827.6400
Toll Free: 855.668.8722
Fax: 905.827.6402
canada.inquires@bio-techne.com

Bio-Techne Ltd

19 Barton Lane
Abingdon Science Park
Abingdon, OX14 3NB, United Kingdom
Phone: (44) (0) 1235 529449
Free Phone: 0800 37 34 15
Fax: (44) (0) 1235 533420
info.EMEA@bio-techne.com

General Contact Information

www.novusbio.com
Technical Support: nb-technical@bio-techne.com
Orders: nb-customerservice@bio-techne.com
General: novus@novusbio.com

Products Related to NBP2-45402

HAF007	Goat anti-Mouse IgG Secondary Antibody [HRP]
NB720-B	Rabbit anti-Mouse IgG (H+L) Secondary Antibody [Biotin]
NBP1-96778	Mouse IgG2a Isotype Control (M2A)
NBP1-85654PEP	UBE2J1 Recombinant Protein Antigen

Limitations

This product is for research use only and is not approved for use in humans or in clinical diagnosis. Primary Antibodies are guaranteed for 1 year from date of receipt.

For more information on our 100% guarantee, please visit www.novusbio.com/guarantee

Earn gift cards/discounts by submitting a review: www.novusbio.com/reviews/submit/NBP2-45402

Earn gift cards/discounts by submitting a publication using this product:
www.novusbio.com/publications

