

# Product Datasheet

## HLA A Antibody (108-2C5)

### NBP2-45320-0.1mg

Unit Size: 0.1 mg

Store at 4C.

[www.novusbio.com](http://www.novusbio.com)



[technical@novusbio.com](mailto:technical@novusbio.com)

Protocols, Publications, Related Products, Reviews, Research Tools and Images at:  
[www.novusbio.com/NBP2-45320](http://www.novusbio.com/NBP2-45320)

Updated 10/23/2024 v.20.1

Earn rewards for product  
reviews and publications.

Submit a publication at [www.novusbio.com/publications](http://www.novusbio.com/publications)

Submit a review at [www.novusbio.com/reviews/destination/NBP2-45320](http://www.novusbio.com/reviews/destination/NBP2-45320)



**NBP2-45320-0.1mg**

HLA A Antibody (108-2C5)

Product Information	
Unit Size	0.1 mg
Concentration	0.2 mg/ml
Storage	Store at 4C.
Clonality	Monoclonal
Clone	108-2C5
Preservative	0.05% Sodium Azide
Isotype	IgG1 Kappa
Purity	Protein G purified
Buffer	10 mM PBS with 0.05% BSA
Target Molecular Weight	41 kDa

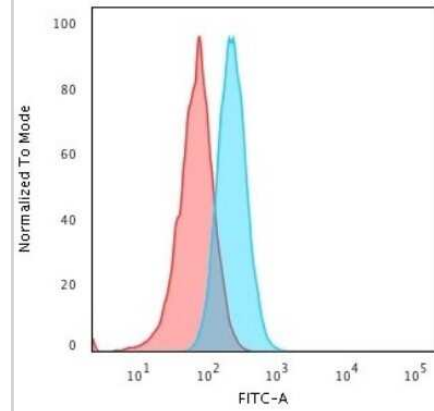
Product Description	
Description	200ug/ml of antibody purified from Bioreactor Concentrate. Prepared in 10 mM PBS with 0.05% BSA & 0.05% azide. Also available WITHOUT BSA & azide at 1.0 mg/ml. (NBP3-11420)  Antibody with azide - store at 2 to 8C. Antibody without azide - store at -20 to -80C.
Host	Mouse
Gene ID	3105
Gene Symbol	HLA-A
Species	Human
Specificity/Sensitivity	HLA-A, with HLA-B and HLA-C, belongs to major histocompatibility complex (MHC) class I antigens and expresses constitutively on all nucleated cells. MHC class I antigens play a role in class I MHC-associated antigen presentation, inhibition of NK cell cytotoxicity, tumor surveillance, and tissue allotransplantation. This monoclonal antibody is useful for HLA molecular typing of peripheral blood leukocytes as well as a large number of leukemic cell lines. It reacts with an intralocus determinant present on a limited number of HLA-A locus-encoded gene products (HLA-A2, -A3, -A28, -A29, -A30, -A31 and -Aw33). Its epitope maps between aa65-to-aa80 of the 1 domain of the HLA-A. This monoclonal antibody recognizes an intralocus determinant present on a limited number of HLA-A locus-encoded gene products (HLA-A2, -A3, A28, -A29, -A30, -A31 and -Aw33). Furthermore, by testing its reactivity with HLA-A2 natural variants and mutants, the importance of amino acid residues 79 and/or 80 of the alpha1 domain was demonstrated in the formation of an intralocus HLA-A determinant.
Immunogen	Normal human peripheral blood lymphocytes

Product Application Details	
Applications	Flow Cytometry, Immunocytochemistry/ Immunofluorescence, Immunofluorescence
Recommended Dilutions	Flow Cytometry 1-2 ug/million cells, Immunocytochemistry/ Immunofluorescence 1-2 ug/ml, Immunofluorescence 0.5 - 1.0 ug/ml
Application Notes	Optimal dilution for a specific application should be determined.



## Images

Flow Cytometry: HLA A Antibody (108-2C5) [NBP2-45320] - Flow Cytometric Analysis of Raji cells. HLA A Antibody (108-2C5) followed by goat anti-Mouse IgG-CF488 (Blue); Isotype control (Red).





### **Novus Biologicals USA**

10730 E. Briarwood Avenue  
Centennial, CO 80112  
USA  
Phone: 303.730.1950  
Toll Free: 1.888.506.6887  
Fax: 303.730.1966  
nb-customerservice@bio-techne.com

### **Bio-Techne Canada**

21 Canmotor Ave  
Toronto, ON M8Z 4E6  
Canada  
Phone: 905.827.6400  
Toll Free: 855.668.8722  
Fax: 905.827.6402  
canada.inquires@bio-techne.com

### **Bio-Techne Ltd**

19 Barton Lane  
Abingdon Science Park  
Abingdon, OX14 3NB, United Kingdom  
Phone: (44) (0) 1235 529449  
Free Phone: 0800 37 34 15  
Fax: (44) (0) 1235 533420  
info.EMEA@bio-techne.com

### **General Contact Information**

[www.novusbio.com](http://www.novusbio.com)  
Technical Support: nb-technical@bio-techne.com  
Orders: nb-customerservice@bio-techne.com  
General: novus@novusbio.com

### **Products Related to NBP2-45320-0.1mg**

HAF007	Goat anti-Mouse IgG Secondary Antibody [HRP]
NB720-B	Rabbit anti-Mouse IgG (H+L) Secondary Antibody [Biotin]
NBP1-43319-0.5mg	Mouse IgG1 Kappa Isotype Control (P3.6.2.8.1)
210-TA-005	TNF-alpha [Unconjugated]

### **Limitations**

This product is for research use only and is not approved for use in humans or in clinical diagnosis. Primary Antibodies are guaranteed for 1 year from date of receipt.

For more information on our 100% guarantee, please visit [www.novusbio.com/guarantee](http://www.novusbio.com/guarantee)

Earn gift cards/discounts by submitting a review: [www.novusbio.com/reviews/submit/NBP2-45320](http://www.novusbio.com/reviews/submit/NBP2-45320)

Earn gift cards/discounts by submitting a publication using this product:  
[www.novusbio.com/publications](http://www.novusbio.com/publications)

