

Product Datasheet

TOX3 Antibody (TOX3/1123)

NBP2-45165-0.1mg

Unit Size: 0.1 mg

Store at 4C.

www.novusbio.com



technical@novusbio.com

Reviews: 1 Publications: 1

Protocols, Publications, Related Products, Reviews, Research Tools and Images at:
www.novusbio.com/NBP2-45165

Updated 7/16/2024 v.20.1

Earn rewards for product reviews and publications.

Submit a publication at www.novusbio.com/publications

Submit a review at www.novusbio.com/reviews/destination/NBP2-45165



NBP2-45165-0.1mg

TOX3 Antibody (TOX3/1123)

Product Information	
Unit Size	0.1 mg
Concentration	0.2 mg/ml
Storage	Store at 4C.
Clonality	Monoclonal
Clone	TOX3/1123
Preservative	0.05% Sodium Azide
Isotype	IgG2b Kappa
Purity	Protein A or G purified
Buffer	1 mM PBS with 0.05% BSA
Target Molecular Weight	63 kDa

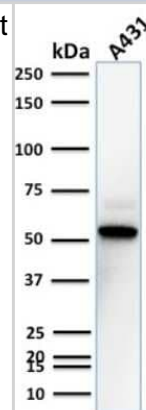
Product Description	
Description	200ug/ml of antibody purified from Bioreactor Concentrate by Protein A or G. Prepared in 1 mM PBS with 0.05% BSA & 0.05% azide. Also available WITHOUT BSA & azide at 1.0 mg/ml. (NBP2-47748) Antibody with azide - store at 2 to 8C. Antibody without azide - store at -20 to -80C.
Host	Mouse
Gene ID	27324
Gene Symbol	TOX3
Species	Human, Chicken
Reactivity Notes	Chicken reactivity reported from a verified customer review.
Immunogen	Recombinant fragment of human TOX3 protein (around aa 251-389) (Exact sequence is proprietary) (Uniprot: O15405)

Product Application Details	
Applications	Western Blot, ELISA, Immunocytochemistry/ Immunofluorescence, Immunohistochemistry, Immunohistochemistry-Paraffin, Protein Array
Recommended Dilutions	Western Blot 1-2 ug/ml, ELISA, Immunohistochemistry, Immunocytochemistry/ Immunofluorescence, Immunohistochemistry-Paraffin 0.5 - 1.0 ug/ml, Protein Array
Application Notes	ELISA: For coating, order Ab without BSA. Optimal dilution for a specific application should be determined.

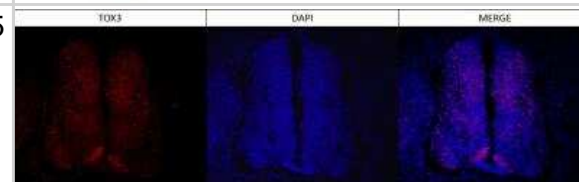


Images

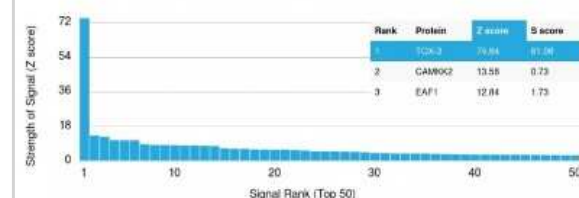
Western Blot: TOX3 Antibody (TOX3/1123) [NBP2-45165] - Western Blot Analysis of A431 cell lysate using TOX3 Mouse Monoclonal Antibody (TOX3/1123).



Immunofluorescence: TOX3 Antibody (TOX3/1123) [NBP2-45165] - E4.5 embryonic chicken neural tube. TOX3 antibody at 1:200 dilution. IF image submitted by a verified customer review.



Protein Array: TOX3 Antibody (TOX3/1123) [NBP2-45165] - Analysis of Protein Array containing more than 19,000 full-length human proteins using TOX3 Mouse Monoclonal Antibody (TOX3/1123).



Publications

Estermann MA, Major AT, Smith CA DMRT1 regulation of TOX3 modulates expansion of the gonadal steroidogenic cell lineage in the chicken embryo Development (Cambridge, England) 2023-02-16 [PMID: 36794750] (IHC-Fr)



Novus Biologicals USA

10730 E. Briarwood Avenue
Centennial, CO 80112
USA
Phone: 303.730.1950
Toll Free: 1.888.506.6887
Fax: 303.730.1966
nb-customerservice@bio-techne.com

Bio-Techne Canada

21 Canmotor Ave
Toronto, ON M8Z 4E6
Canada
Phone: 905.827.6400
Toll Free: 855.668.8722
Fax: 905.827.6402
canada.inquires@bio-techne.com

Bio-Techne Ltd

19 Barton Lane
Abingdon Science Park
Abingdon, OX14 3NB, United Kingdom
Phone: (44) (0) 1235 529449
Free Phone: 0800 37 34 15
Fax: (44) (0) 1235 533420
info.EMEA@bio-techne.com

General Contact Information

www.novusbio.com
Technical Support: nb-technical@bio-techne.com
Orders: nb-customerservice@bio-techne.com
General: novus@novusbio.com

Products Related to NBP2-45165-0.1mg

HAF007	Goat anti-Mouse IgG Secondary Antibody [HRP]
NB720-B	Rabbit anti-Mouse IgG (H+L) Secondary Antibody [Biotin]
NBP1-43317-0.5mg	Mouse IgG2b Kappa Light Chain Isotype Control (MG2b)
NBP1-86676PEP	TOX3 Recombinant Protein Antigen

Limitations

This product is for research use only and is not approved for use in humans or in clinical diagnosis. Primary Antibodies are guaranteed for 1 year from date of receipt.

For more information on our 100% guarantee, please visit www.novusbio.com/guarantee

Earn gift cards/discounts by submitting a review: www.novusbio.com/reviews/submit/NBP2-45165

Earn gift cards/discounts by submitting a publication using this product:
www.novusbio.com/publications

